

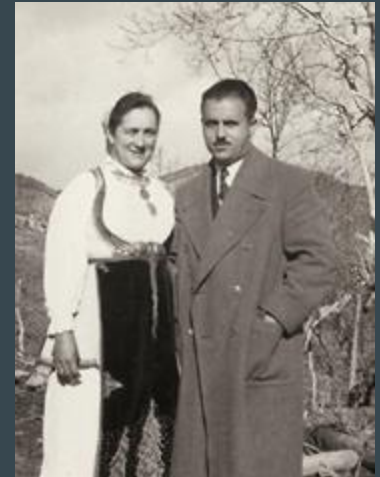
Two Bar Sheep Co.



Jorgiea Raftopoulos

How we came to be...

- My grandparents immigrated from Greece to NW CO and began sheep ranching in the early 1920's
- Today, my parents, two brothers and myself own and operate Two Bar Sheep Co.
 - Open range sheep operation
- My brothers and I own and operate Pinnacle Valley Ranch
 - Commercial cow-calf operation



Multi-Generational Family Business

- Communication is key
- “Division of Labor” or Niches
- All working toward a common goal



Open Range Sheep Operation



Wool: Members of Shaniko Wool Company

RWS/Nativa Certified



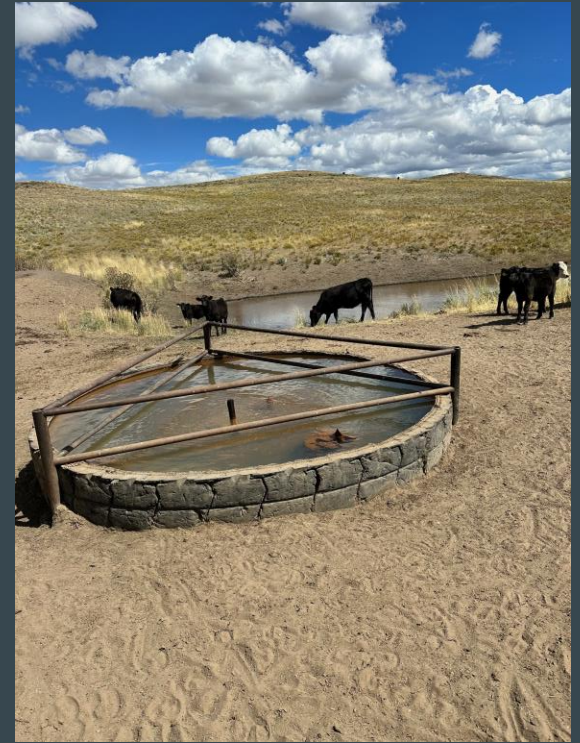
Lamb: CO Lamb Processors

- The way we have marketed our lambs has evolved as well
- Started feeding lambs in the 90's
- CLP
 - Opened in 2020
 - Vertically integrated our operation
 - State-of-the-art facility



Extras

- Hunting
- NRCS/FSA
- Recreation
- Tours, 'Lamb Camp'



65 years old

Average age of the American Farmer/Rancher

THANK YOU!

Jorgiea Raftopoulos
jorgiearaft@gmail.com
@jorgiearaftopoulos

