



Kate Watkins, PhD
State Demographer

EDCC Regional Economic Development Forum
March 5, 2025 Craig, Colorado



COLORADO
Department of Local Affairs
State Demography Office

Key Trends to Watch

- Employment has stabilized in Moffat and Rio Blanco counties
- Jobs growth and diversification in expected to continue in Routt County
- Local, state, national, and global populations are aging due to lower birth rates



Big Picture Numbers

Total Population by State and County

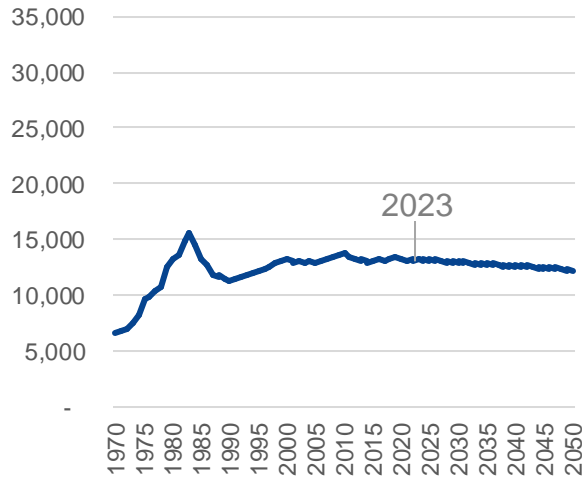
	2023	2030	Change in Level	Percent Change
Colorado	5,876,300	6,324,127	447,827	7.6%
Moffatt County	13,317	13,023	-294	-2.2%
Rio Blanco County	6,576	6,317	-259	-3.9%
Routt County	25,064	26,785	1,721	6.9%



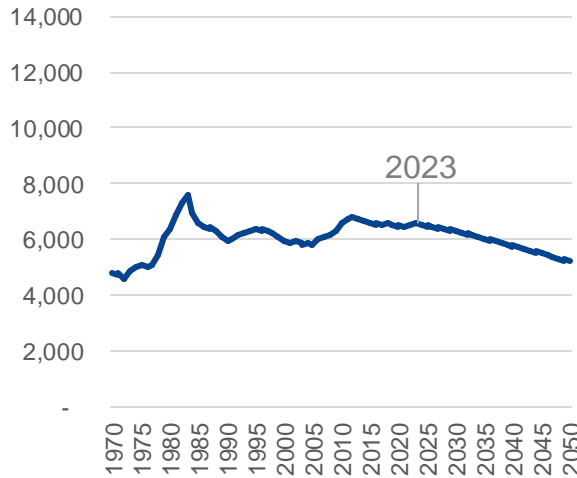
Source: State Demography Office, vintage 2023 estimates and projections.

Total population by County

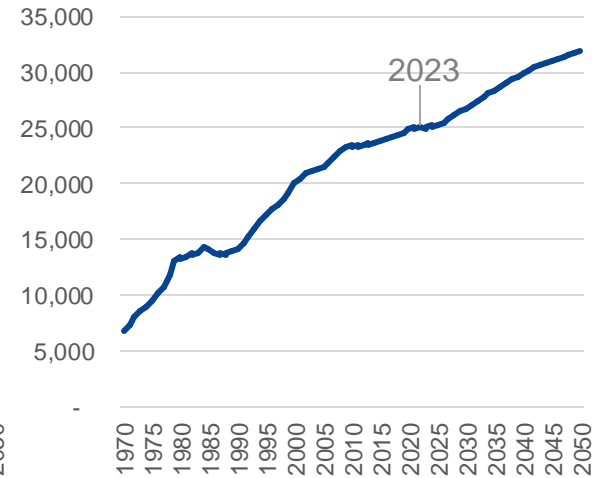
Moffat County



Rio Blanco County

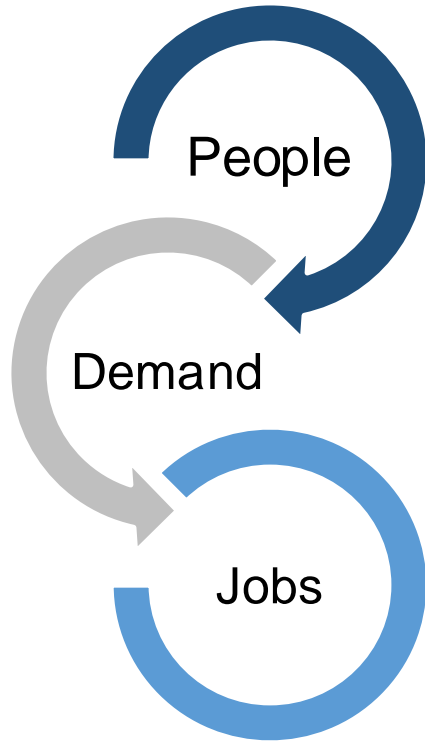


Routt County



Source: State Demography Office, vintage 2023 estimates and projections.

People and the Economy



“Jobs are people”

“Houses are where those jobs go to sleep”

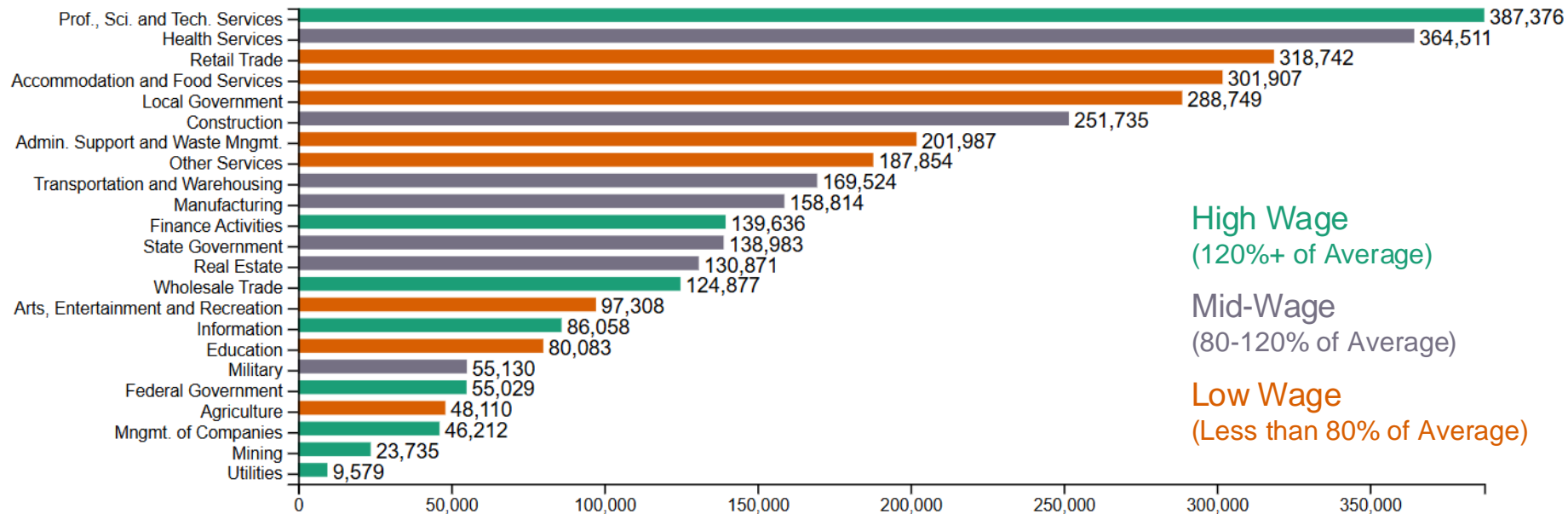


Jobs by Sector

Colorado Employment, 2023

Jobs: 3.67 million

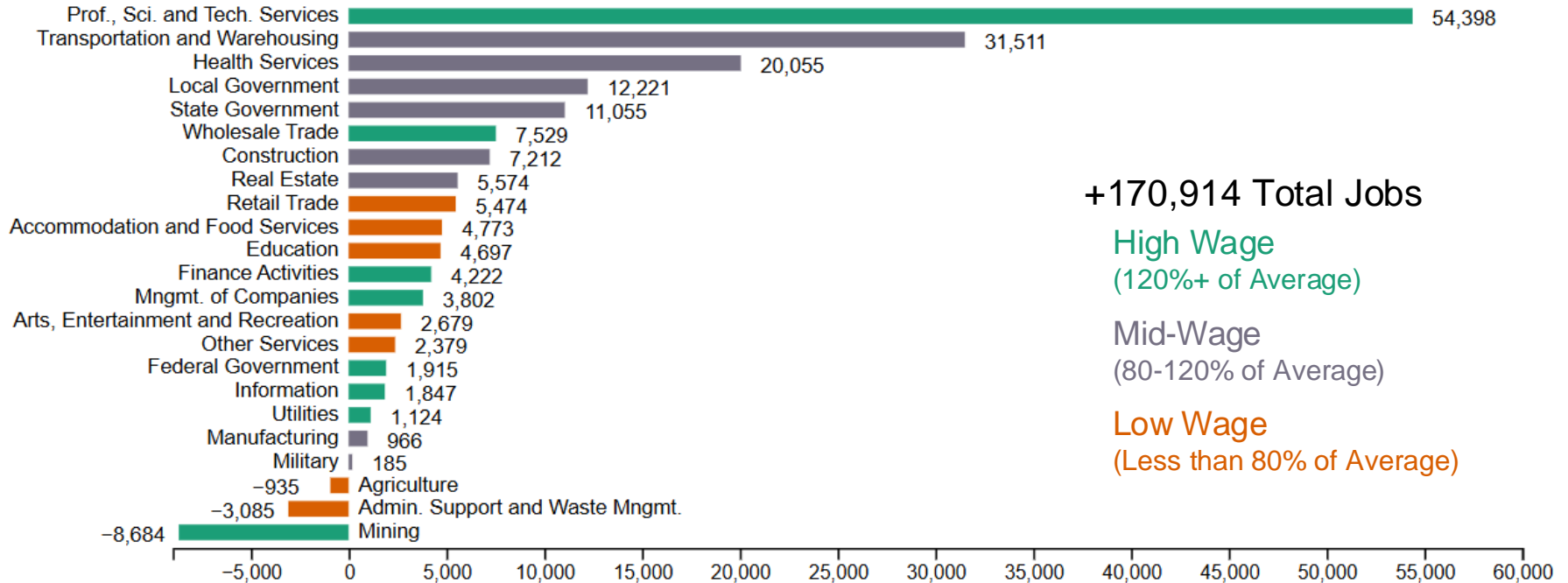
Average Annual Wage: \$77,114



Source: Bureau of Labor Statistics, QCEW.

Recent Trends

Colorado Employment Changes, 2019 to 2023



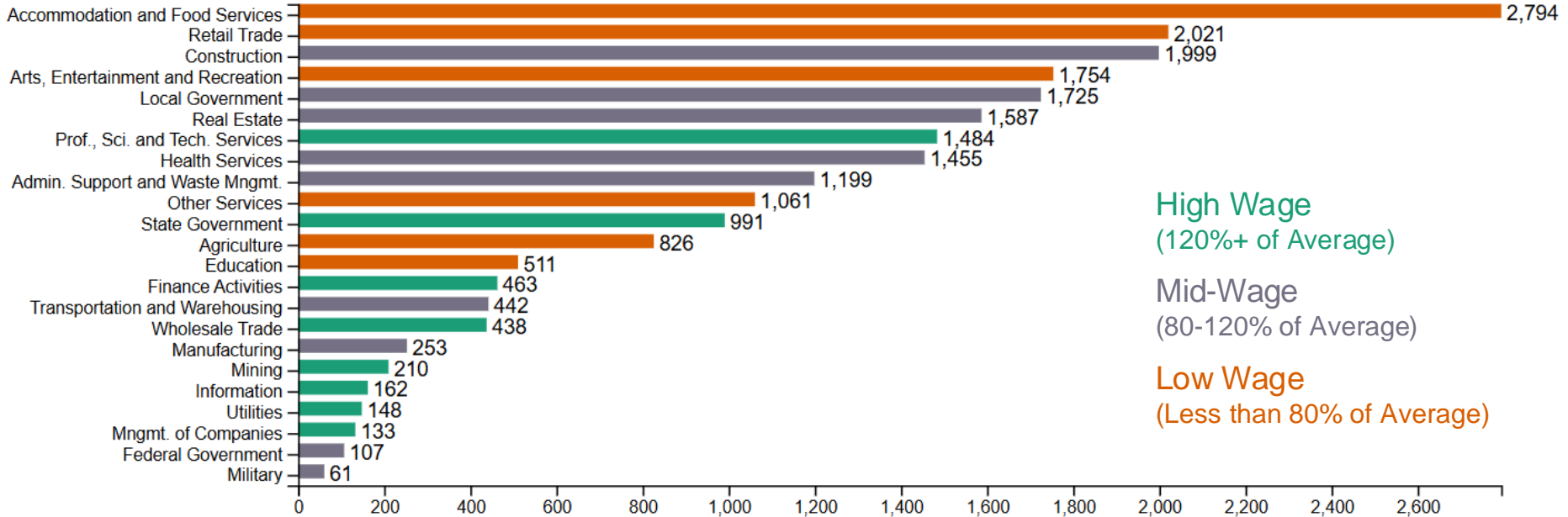
Source: Bureau of Labor Statistics, QCEW.

Jobs by Sector

Routt County Employment, 2023

Jobs: 21,824

Average Annual Wage: \$58,878



High Wage
(120%+ of Average)

Mid-Wage
(80-120% of Average)

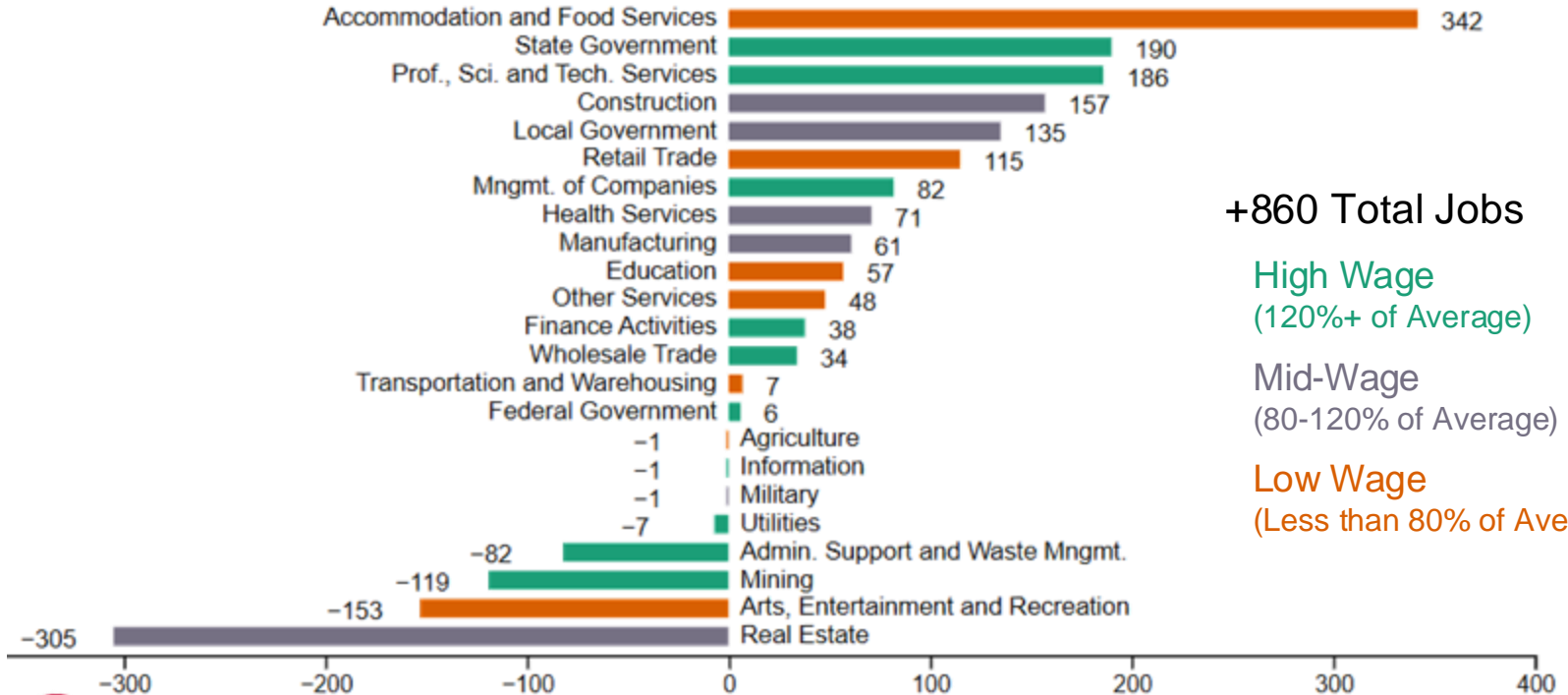
Low Wage
(Less than 80% of Average)



Source: Bureau of Labor Statistics, QCEW.

Recent Trends

Routt County Employment Changes, 2019 to 2023



+860 Total Jobs

High Wage
(120%+ of Average)

Mid-Wage
(80-120% of Average)

Low Wage
(Less than 80% of Average)



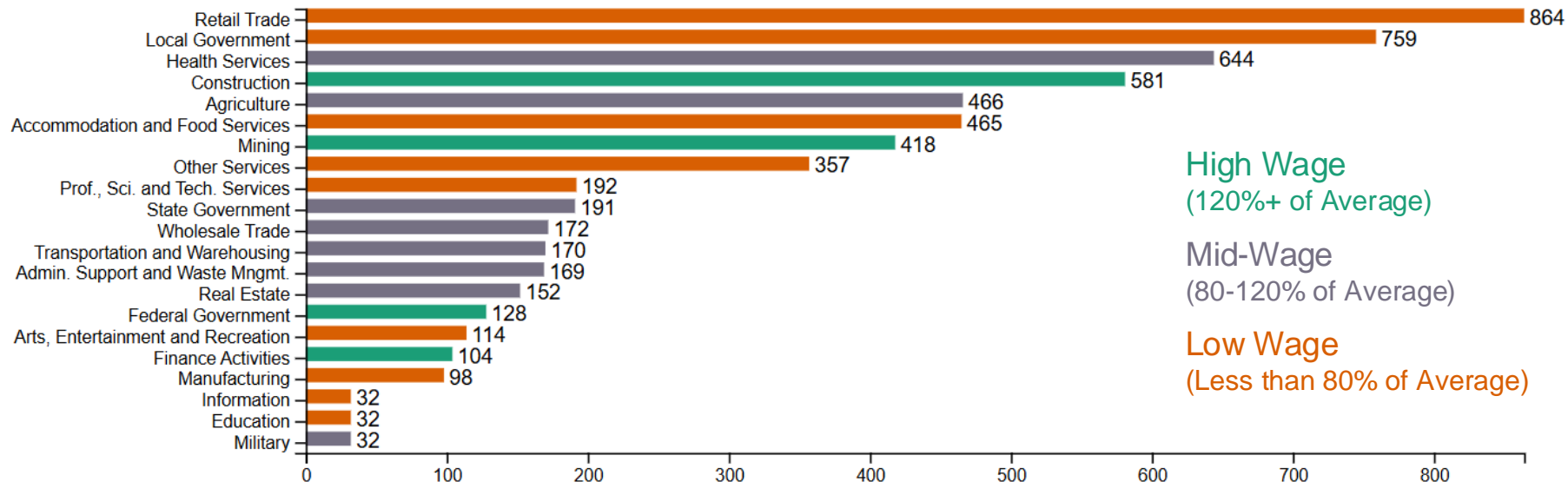
Source: Bureau of Labor Statistics, QCEW.

Jobs by Sector

Moffatt County Employment, 2023

Jobs: 6,375

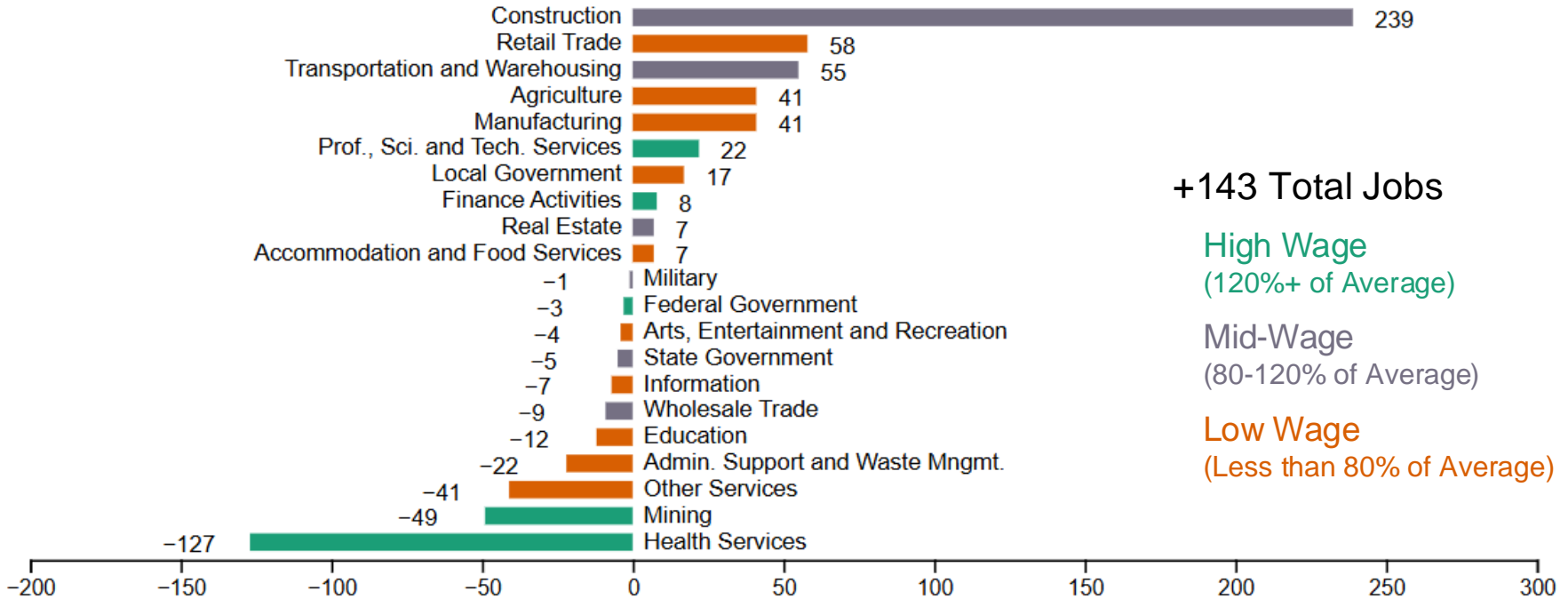
Average Annual Wage: \$58,244



Source: Bureau of Labor Statistics, QCEW. Education, management, and utilities sectors suppressed for confidentiality.

Recent Trends

Moffatt County Employment Changes, 2019 to 2023



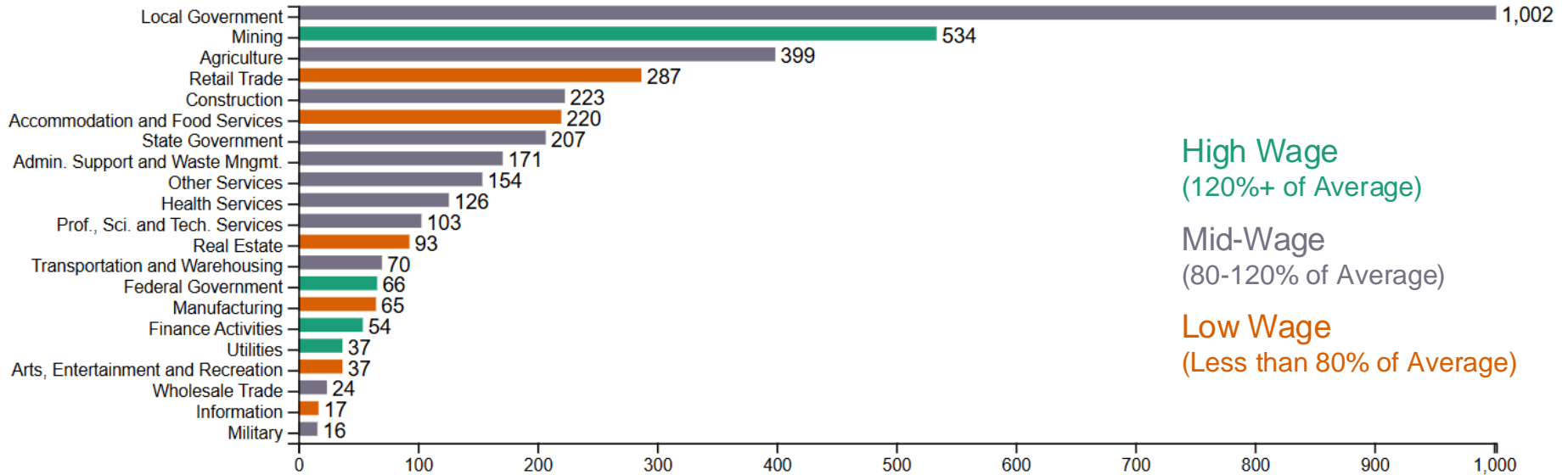
Source: Bureau of Labor Statistics, QCEW.

Jobs by Sector

Rio Blanco County Employment, 2023

Jobs: 3,925

Average Annual Wage: \$59,216



High Wage
(120%+ of Average)

Mid-Wage
(80-120% of Average)

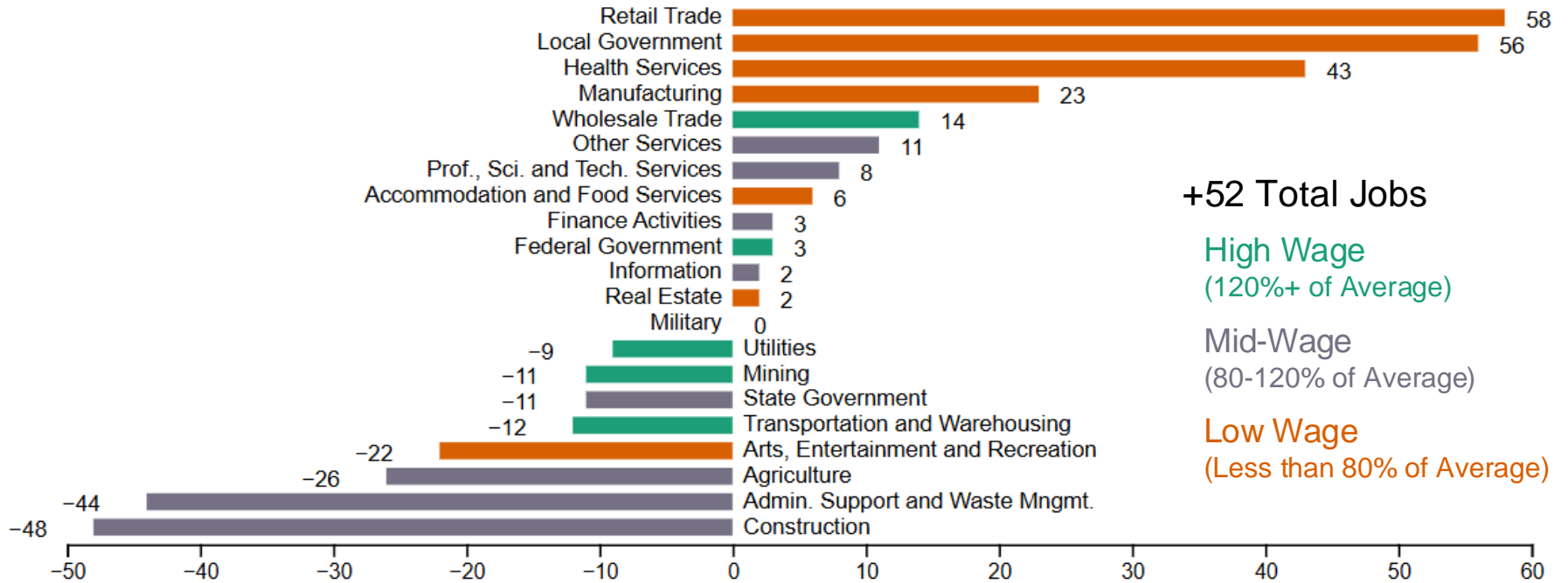
Low Wage
(Less than 80% of Average)



Source: Bureau of Labor Statistics, QCEW. Education, management, and utilities sectors suppressed for confidentiality.

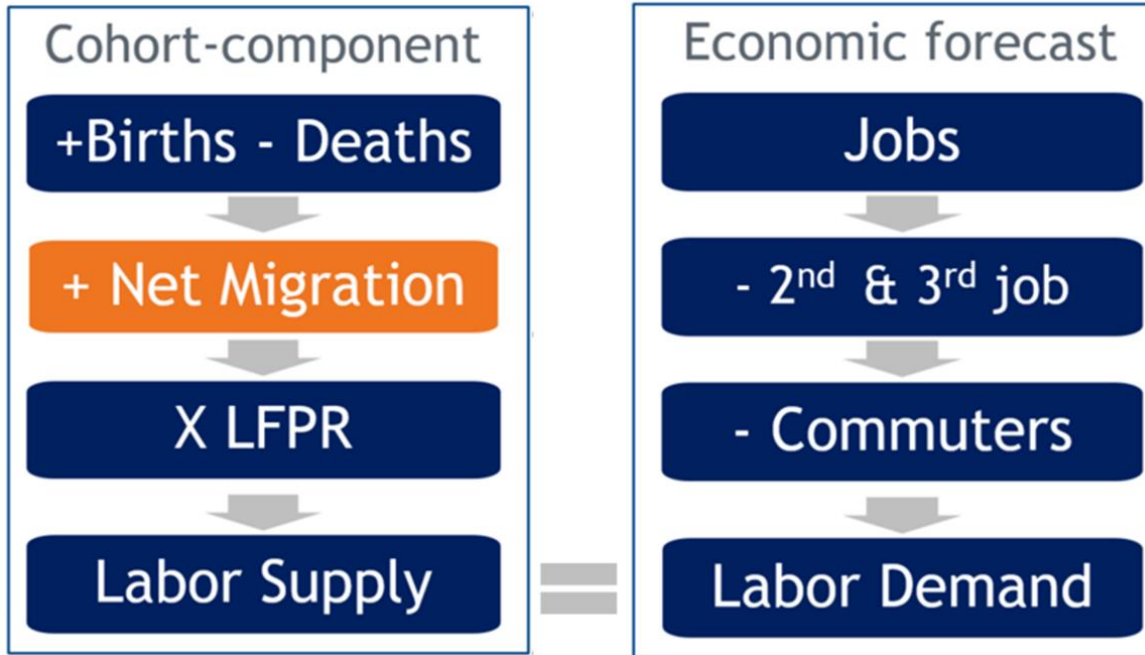
Recent Trends

Rio Blanco County Employment Changes, 2019 to 2023



Source: Bureau of Labor Statistics, QCEW.

Colorado Population Forecast Methodology



Differences between supply and demand
resolved by net migration

U.S. growth is important

Jobs are people

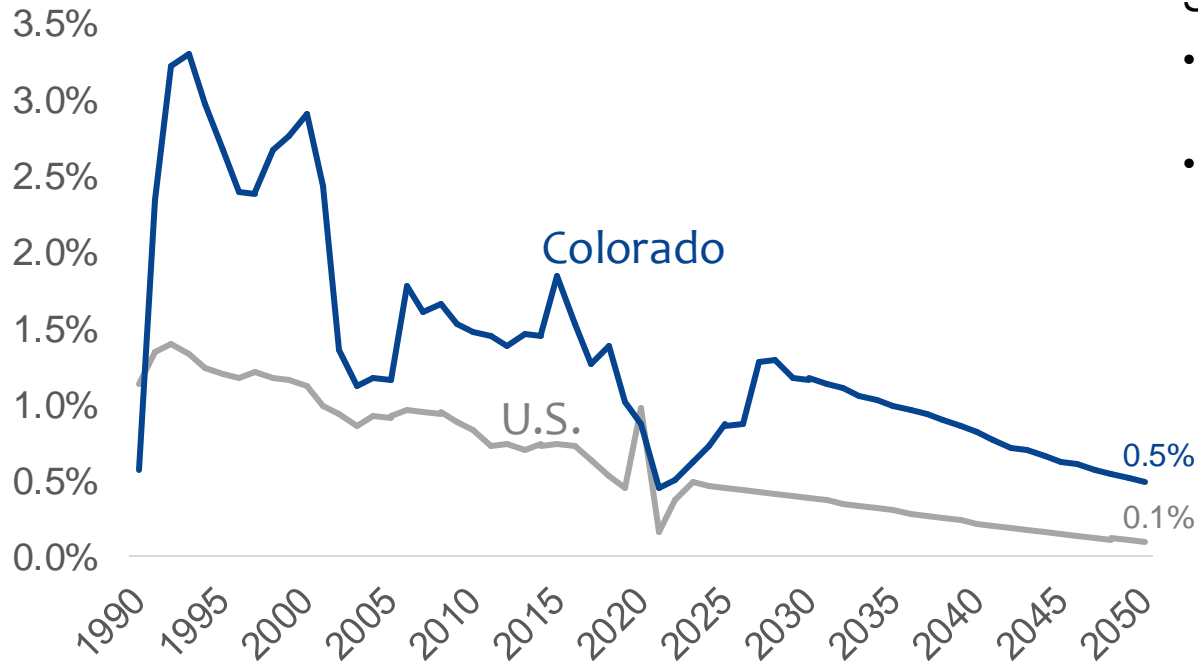
Age matters

Job demand and
expected retirements
drive migration



Population growth rates are slowing

Annual Population Percent Change



Slowing U.S. Population Growth

- Several states continue to see their populations shrink
- U.S. overall expected to enter natural decline (more deaths than births) in 2038 based on latest projections



Source: State Demography Office, vintage 2023 estimates and projections; U.S. Census Bureau population projections, main series 2022-2100.

Components of Population Change

Natural Change

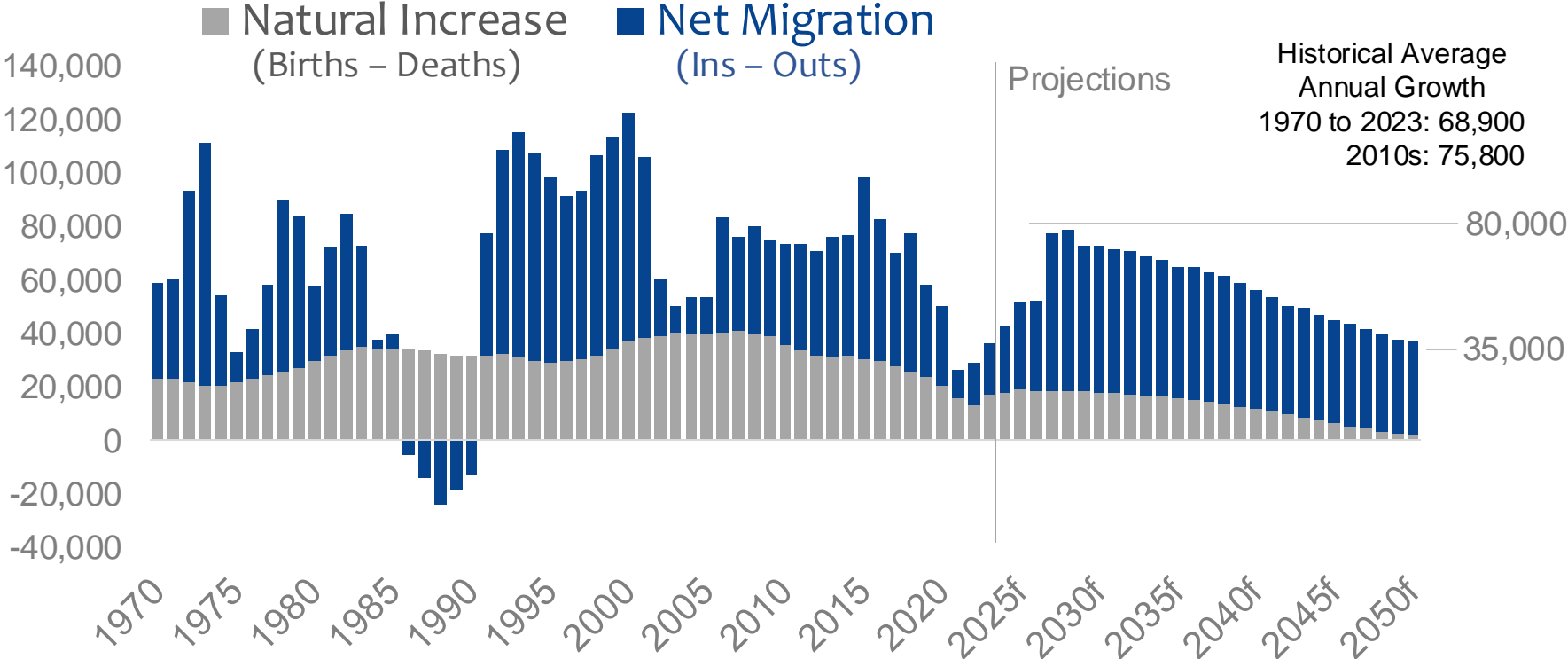


Net Migration

In-Migration minus Out-Migration



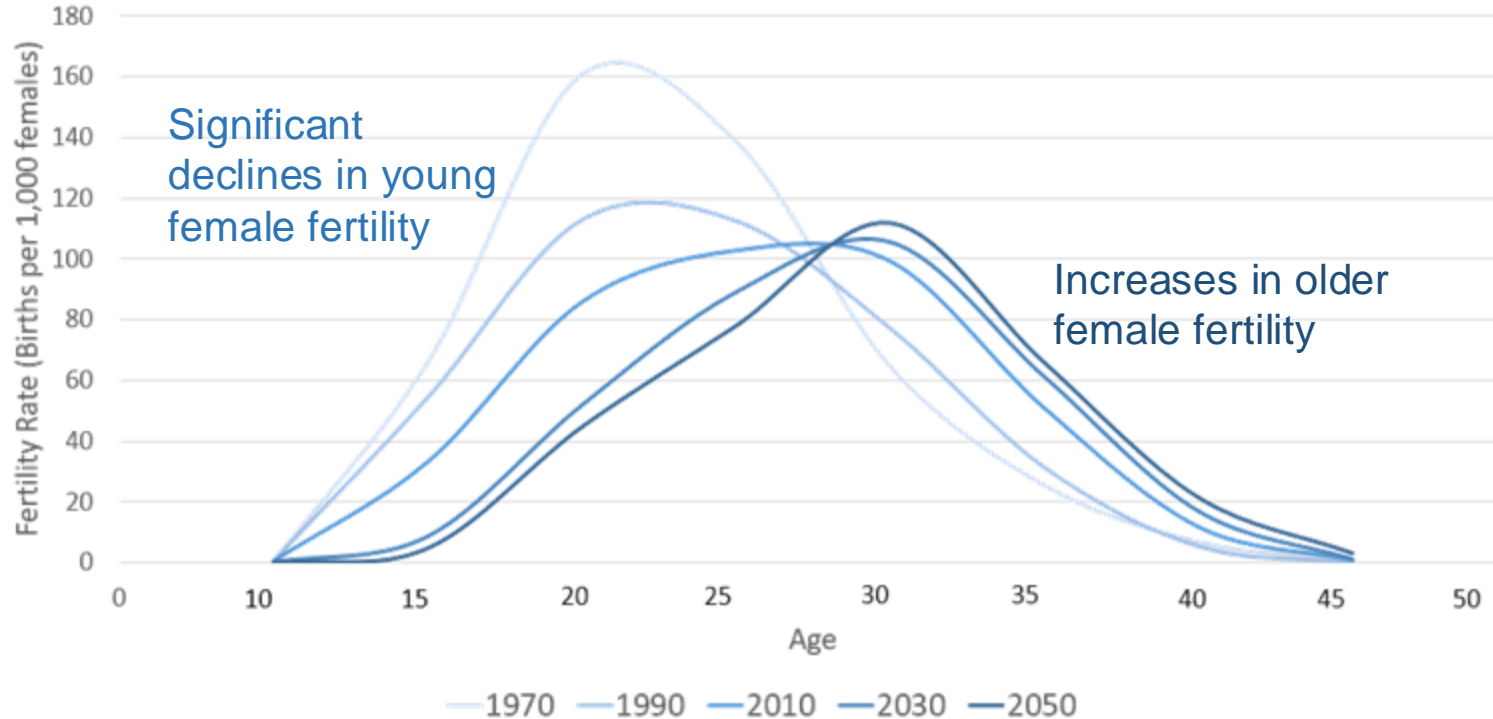
Colorado Components of Population Change



Source: State Demography Office, vintage 2023 estimates and projections.

Fertility rates continue to decline

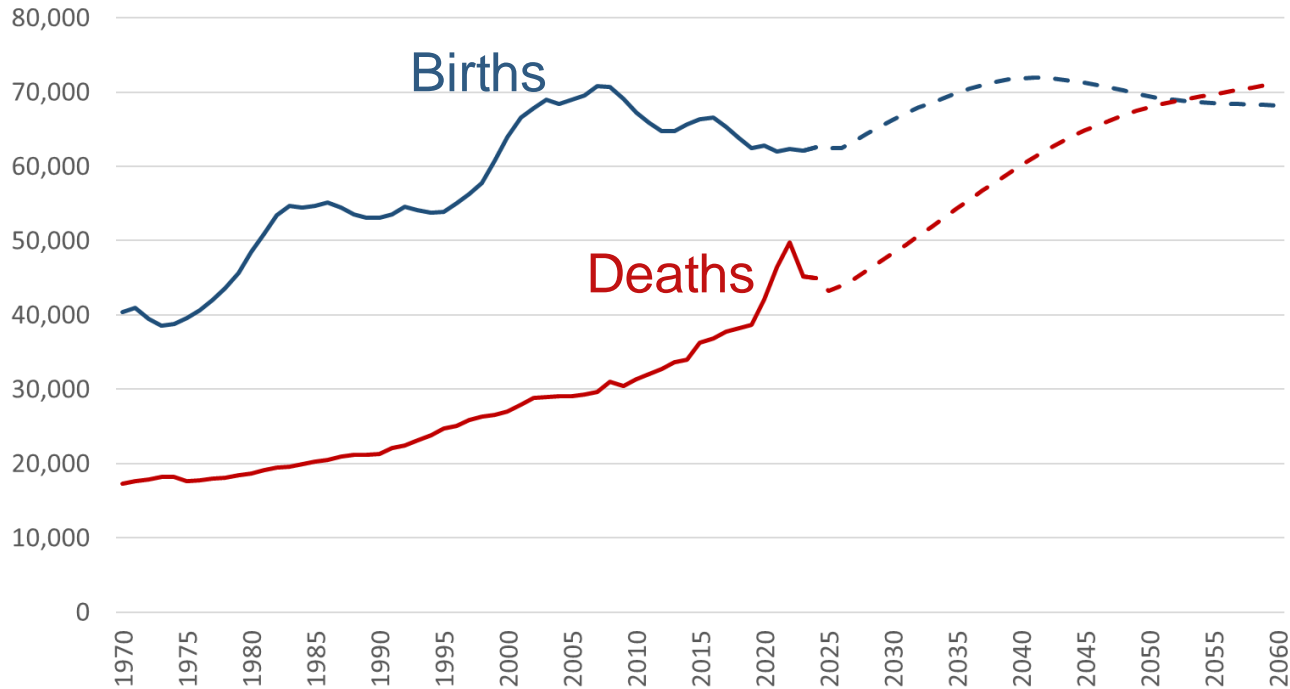
Colorado Fertility Rate by Age of Mother



Source: Colorado Demography Office vintage 2023 estimates and projections; Colorado birth estimates from Colorado Department of Public Health and Environment, 2024.

Colorado deaths expected to overtake births in 2053

Colorado Births and Deaths

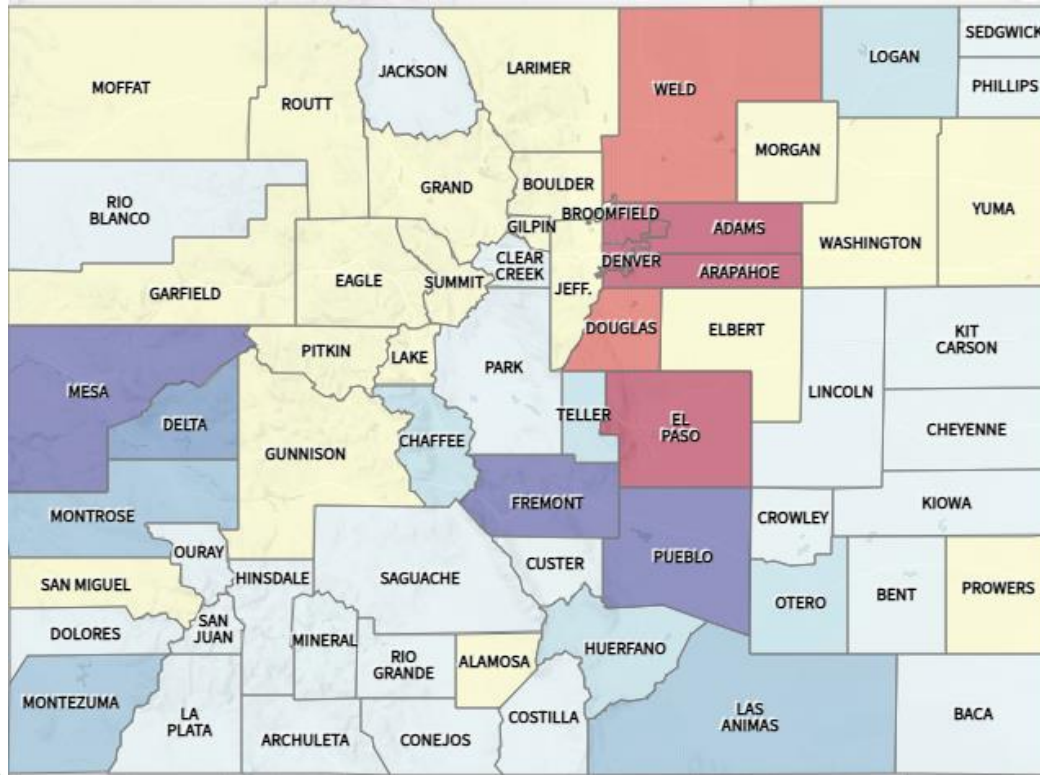


- Births increase slowly due to larger female population
- Deaths increase due to larger population in older age groups subject to higher mortality
- Colorado enters natural decline in 2053 vs. the U.S. in 2038

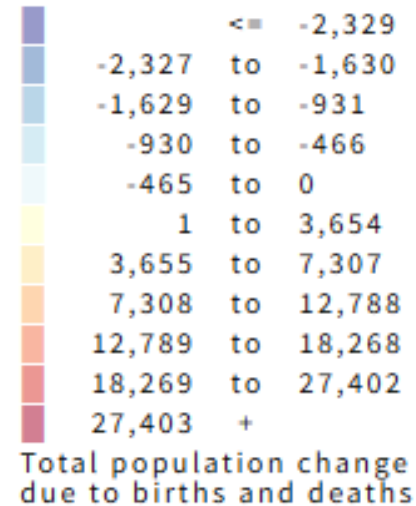


Source: Colorado Demography Office vintage 2023 estimates and projections.
<https://demography.dola.colorado.gov/assets/html/netmighist.html>

Natural change, 2020 to 2030



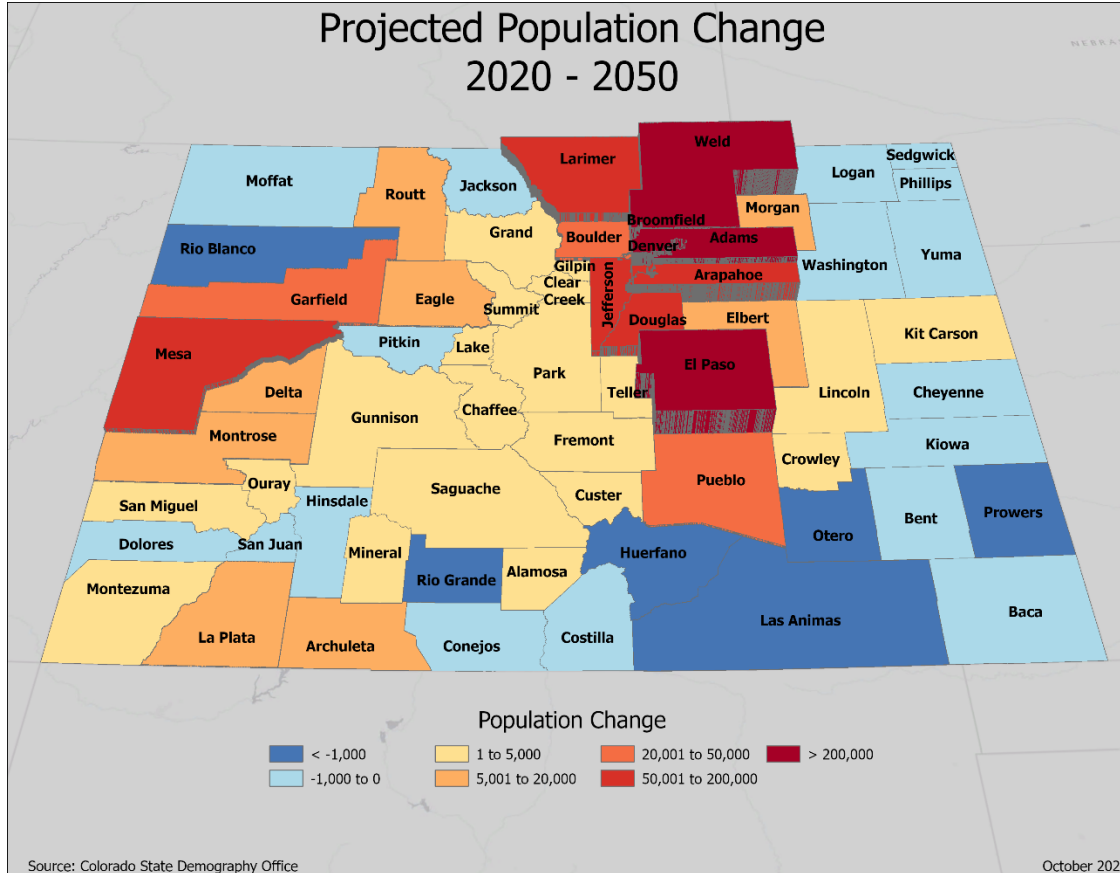
From 2020 to 2030,
35 counties expected to
experience natural decline



Source: Colorado Demography Office vintage 2023 estimates and projections.
<https://demography.dola.colorado.gov/assets/html/netmighist.html>

The Colorado long-term forecast

Projected Population Change
2020 - 2050

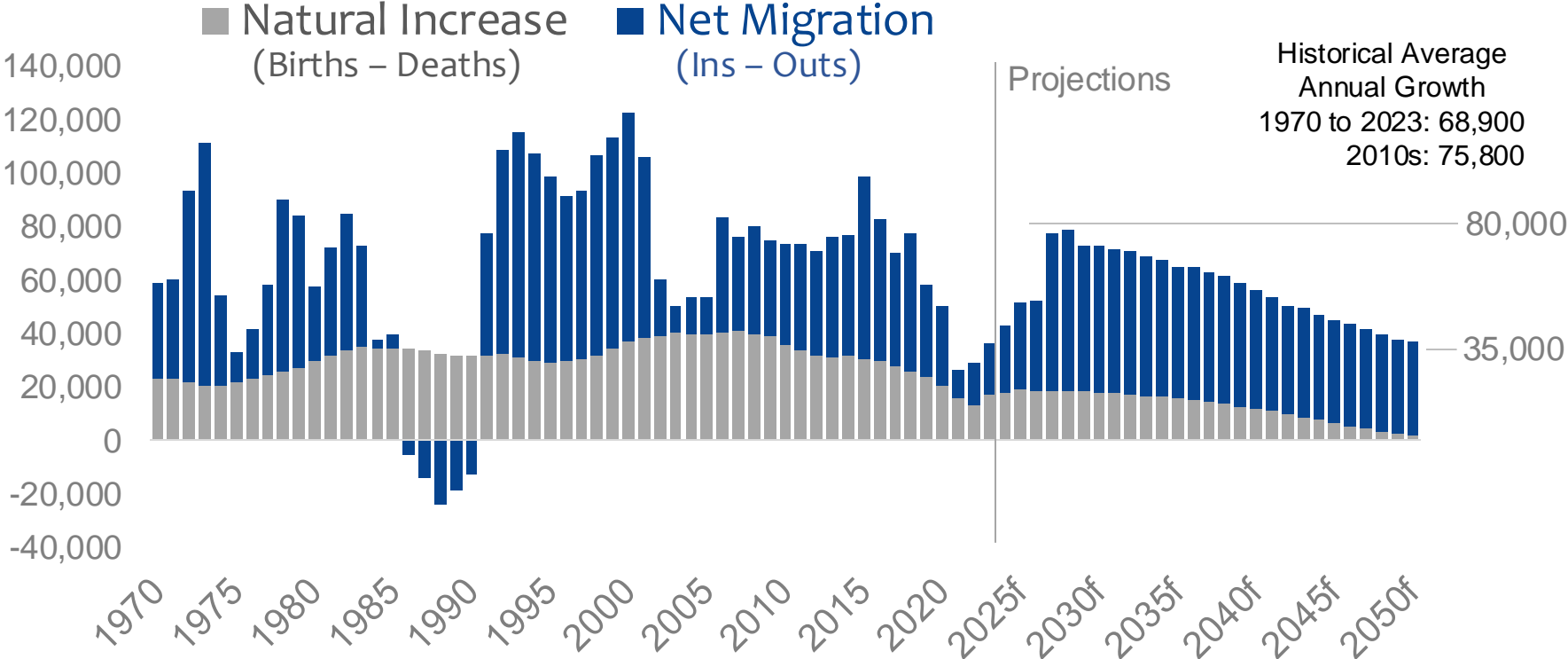


Statewide of increase 1.5 million people between 2023 and 2050

1.4 million along the Front Range (90%)

- 768,800 Denver-Boulder (50%)
- 339,177 North Front Range (22%)
- 260,500 South Front Range (27%)

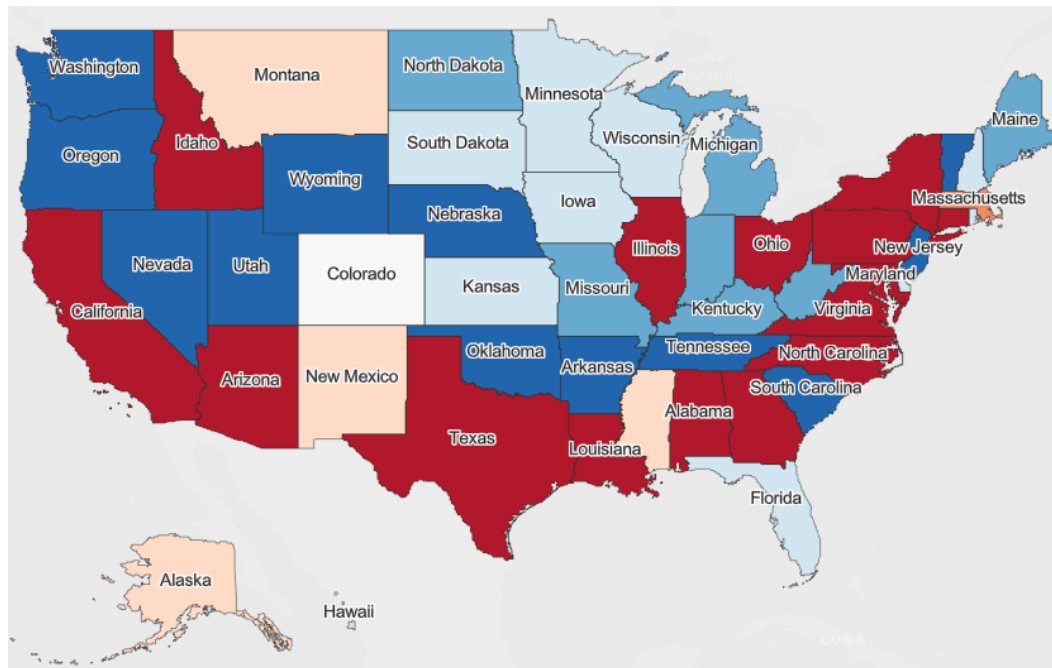
Colorado Components of Population Change



Source: State Demography Office, vintage 2023 estimates and projections.

Where are Colorado's migrants from?

2023 Net Migration to Colorado



In	#
Texas	32,150
California	26,148
Florida	12,786
Arizona	12,378
North Carolina	10,351

Out	#
Texas	25,369
California	14,784
Florida	13,264
Arizona	8,344
Nevada	8,064

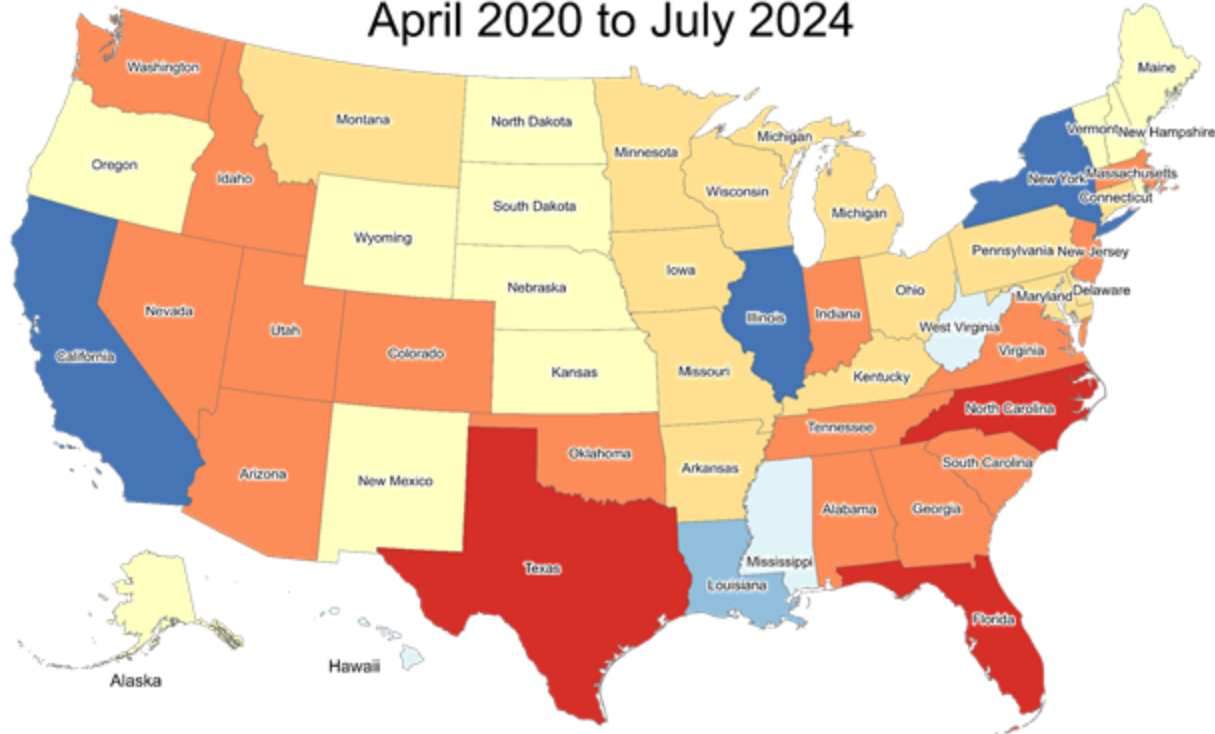
Net	#
California	11,364
Texas	6,781
North Carolina	5,958
Virginia	4,795
Arizona	4,034



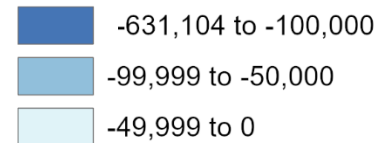
Source: U.S. Census Bureau, 2023 American Community Survey 1-Year Estimates.
https://gis.dola.colorado.gov/State_Migration/

Recent Growth Across States

Population Change
April 2020 to July 2024



Shrinking



Growing



Source: U.S. Census Bureau vintage 2024 estimates.

Aging Matters



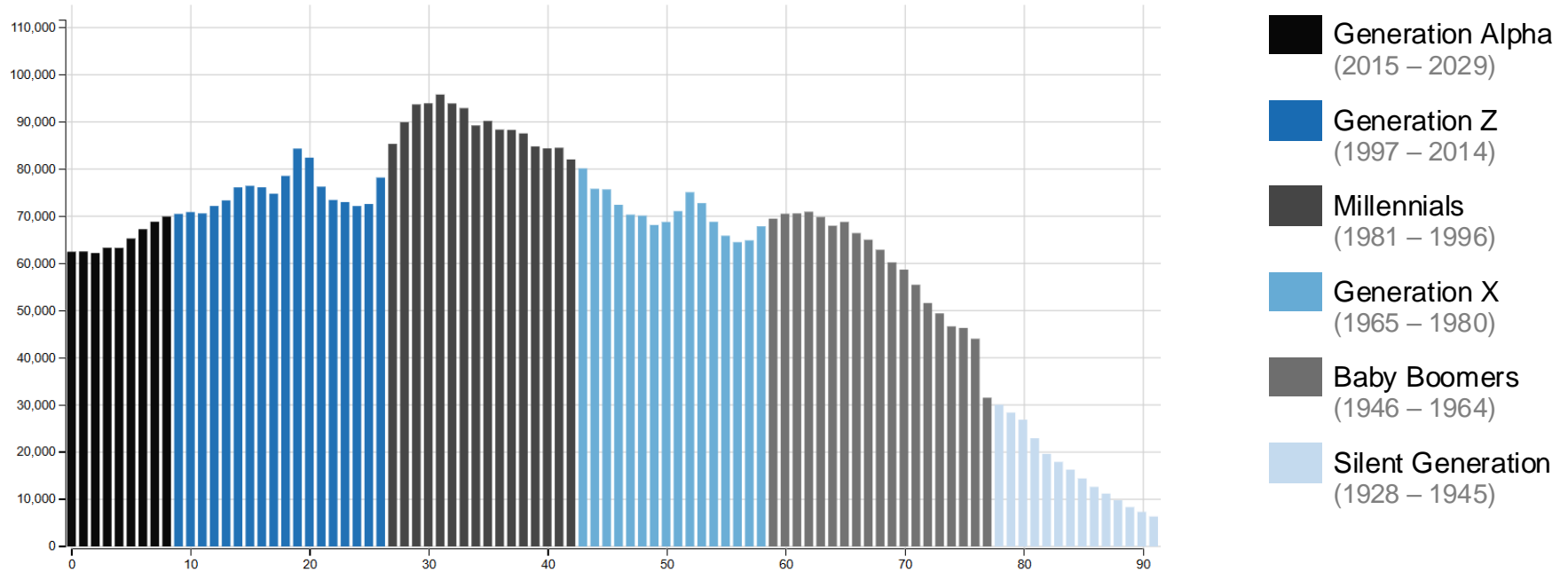
Why Aging Matters

- Tighter labor markets mean more competition for talent
- Shifts in demand for goods and services
- Pressure and turnover in the housing supply
- Income sources and amounts evolve as we age
- Downward pressure on state and local government tax revenue



Population by age and generation

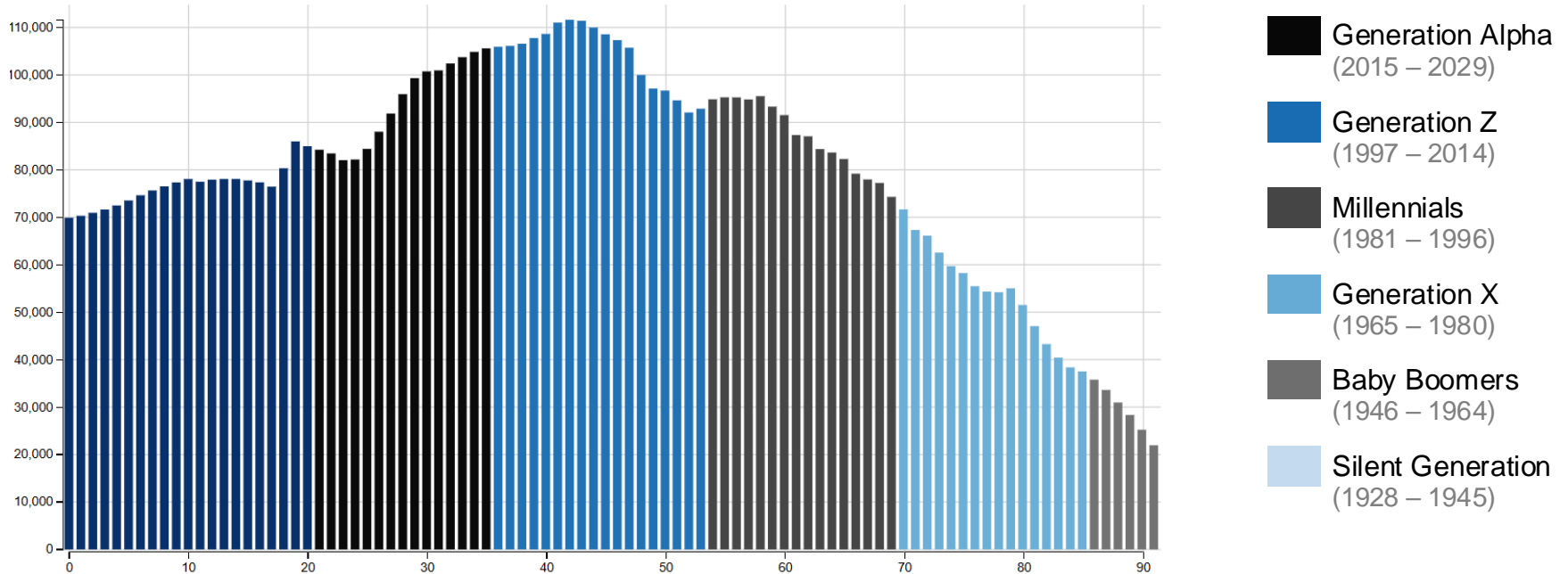
Colorado, 2023



Source: State Demography Office, vintage 2023 estimates and projections.
Interactive visuals available at: <https://gis.dola.colorado.gov/Age-Animation-Bars>

Population by age and generation

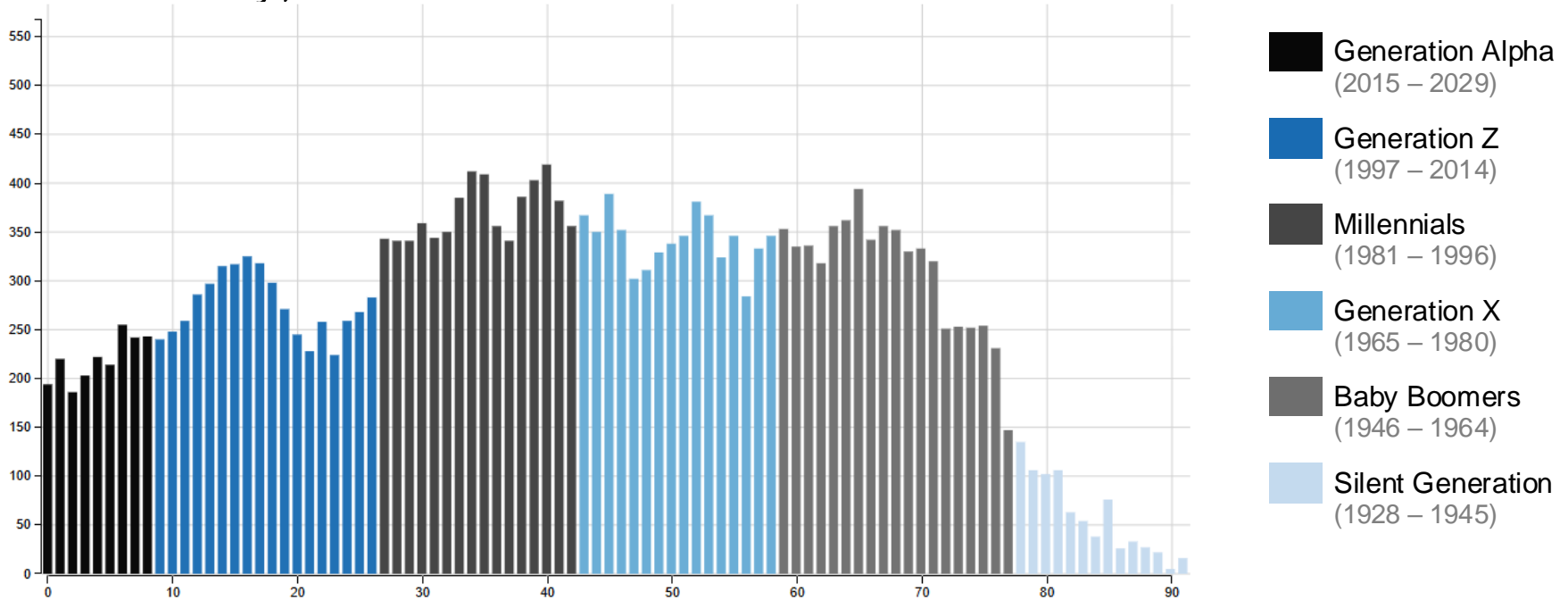
Colorado, 2050



Source: State Demography Office, vintage 2023 estimates and projections.
Interactive visuals available at: <https://gis.dola.colorado.gov/Age-Animation-Bars>

Population by age and generation

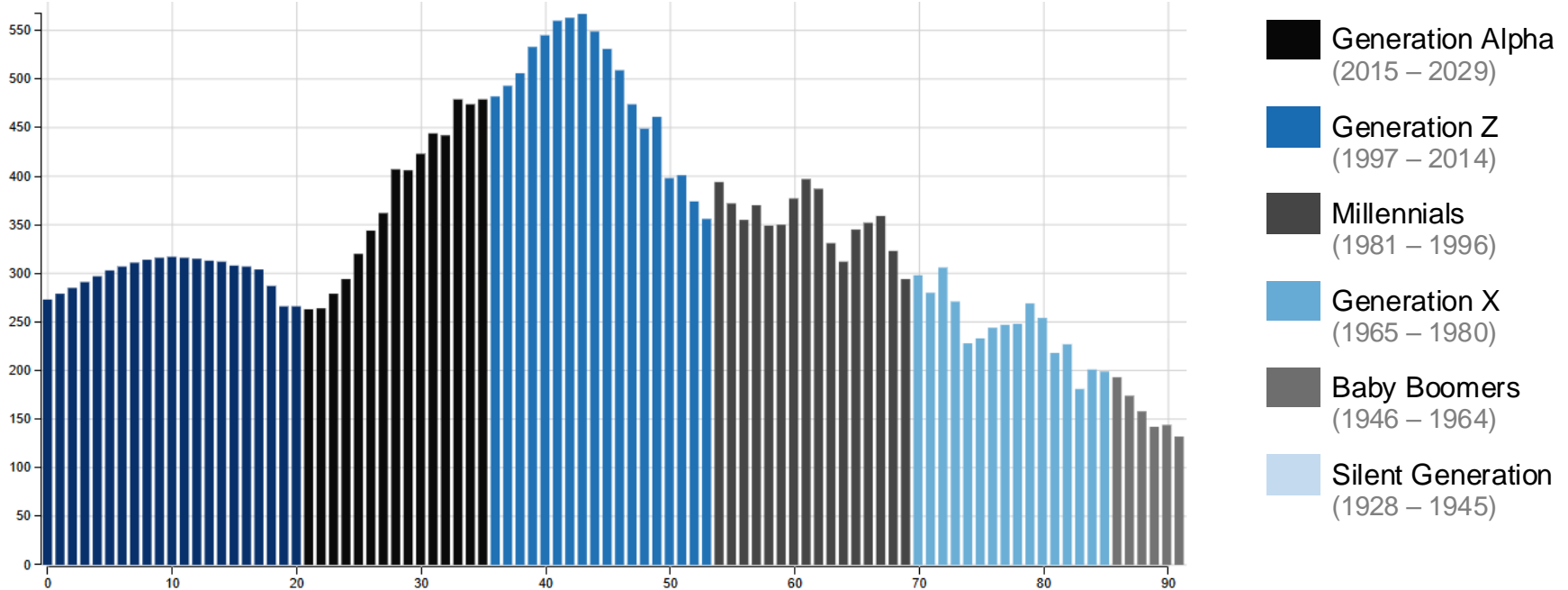
Routt County, 2023



Source: State Demography Office, vintage 2023 estimates and projections.
Interactive visuals available at: <https://gis.dola.colorado.gov/Age-Animation-Bars>

Population by age and generation

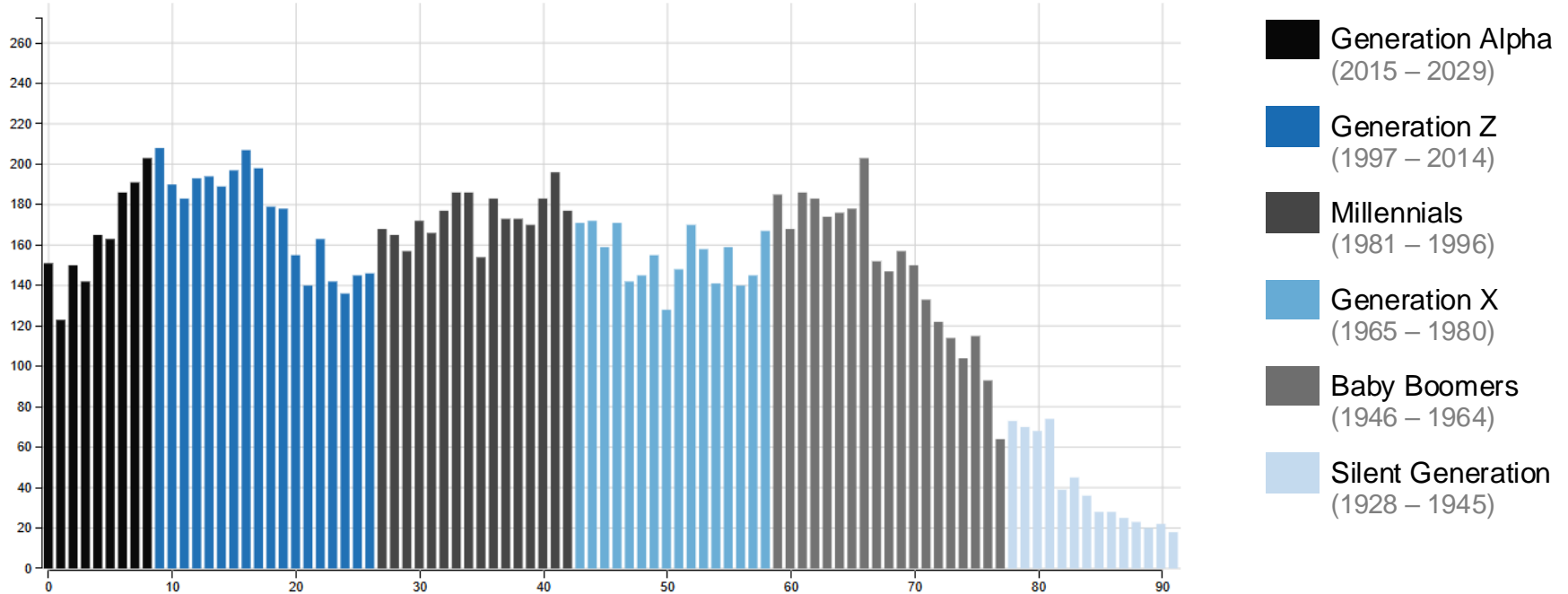
Routt County, 2050



Source: State Demography Office, vintage 2023 estimates and projections.
Interactive visuals available at: <https://gis.dola.colorado.gov/Age-Animation-Bars>

Population by age and generation

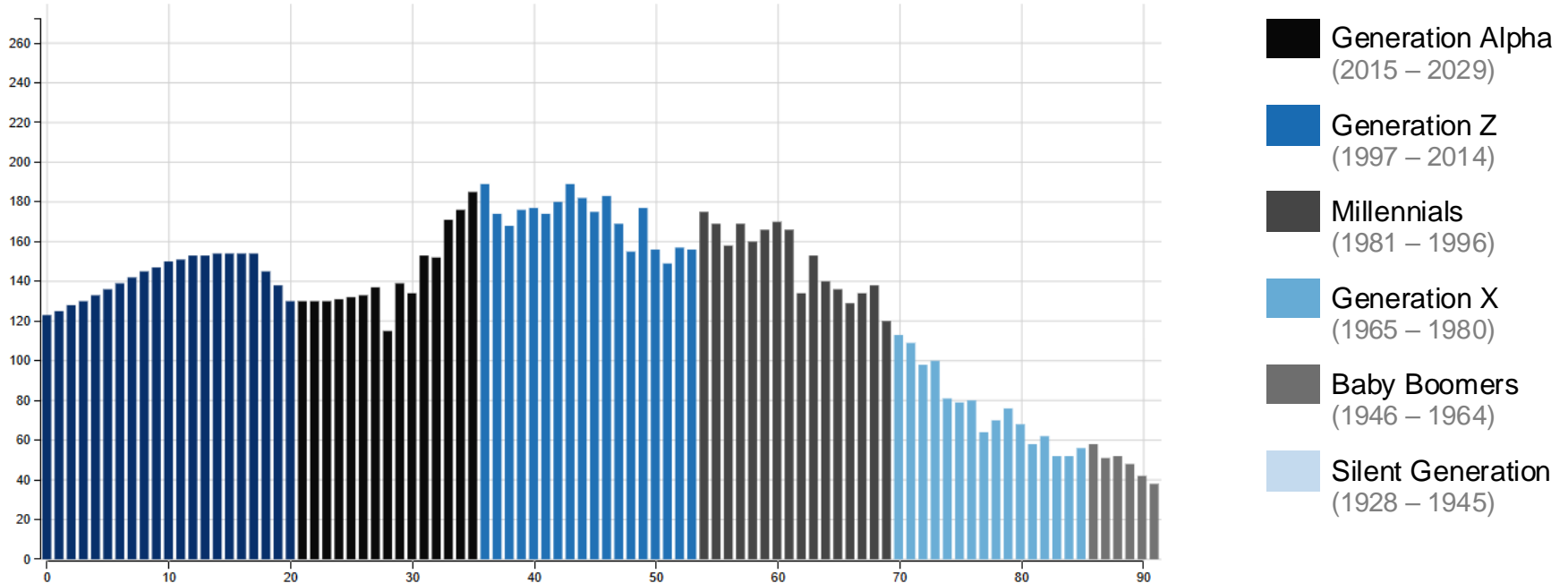
Moffat County, 2023



Source: State Demography Office, vintage 2023 estimates and projections.
Interactive visuals available at: <https://gis.dola.colorado.gov/Age-Animation-Bars>

Population by age and generation

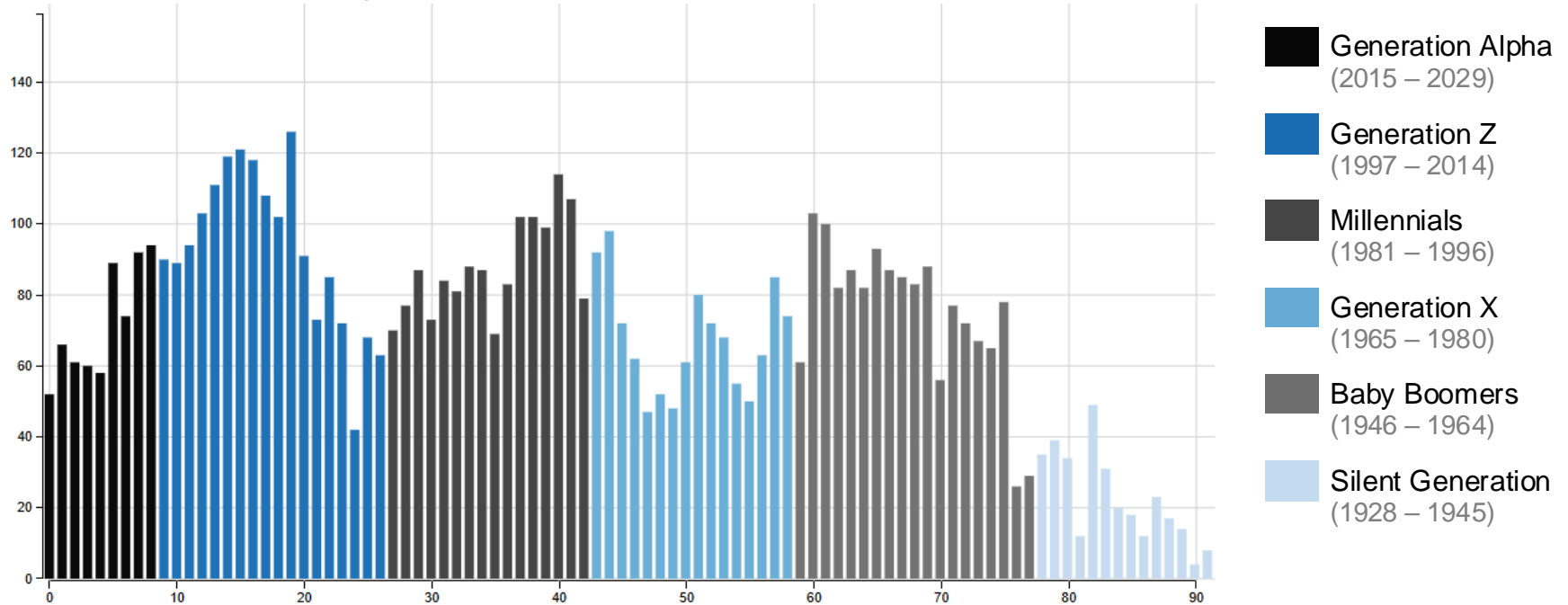
Moffat County, 2050



Source: State Demography Office, vintage 2023 estimates and projections.
Interactive visuals available at: <https://gis.dola.colorado.gov/Age-Animation-Bars>

Population by age and generation

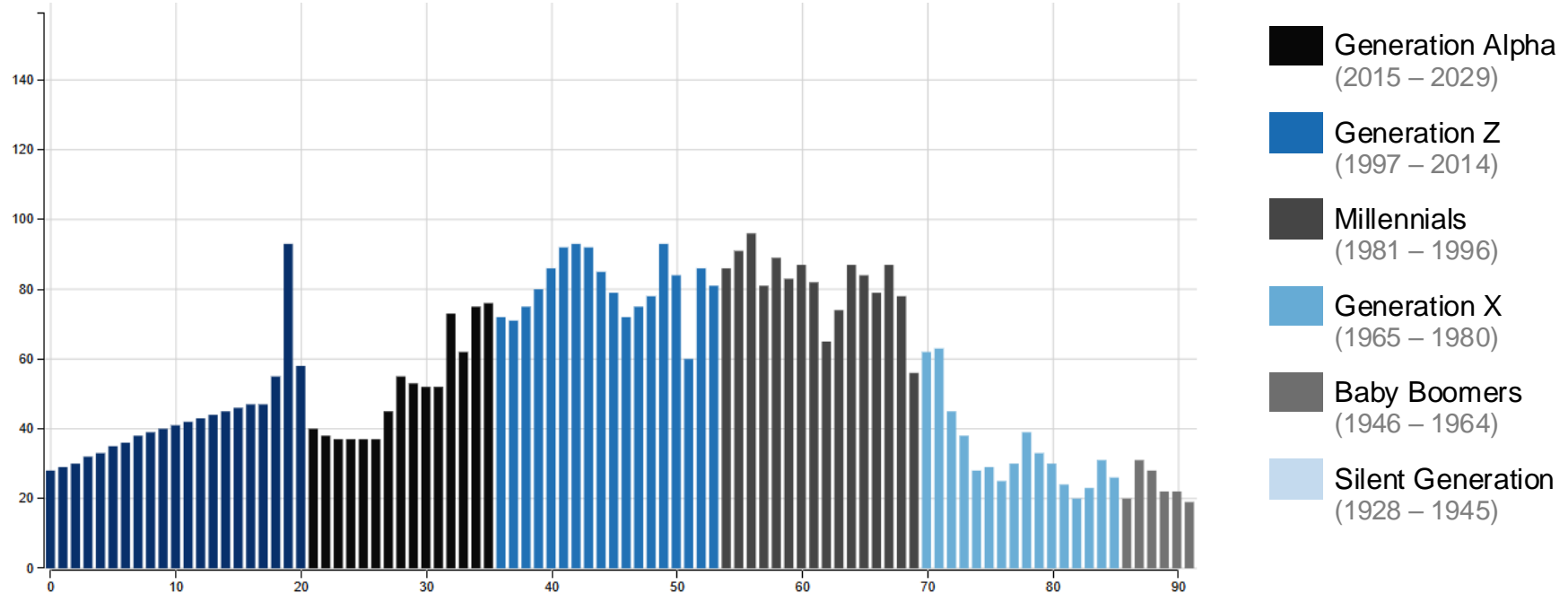
Rio Blanco County, 2023



Source: State Demography Office, vintage 2023 estimates and projections.
Interactive visuals available at: <https://gis.dola.colorado.gov/Age-Animation-Bars>

Population by age and generation

Rio Blanco County, 2050

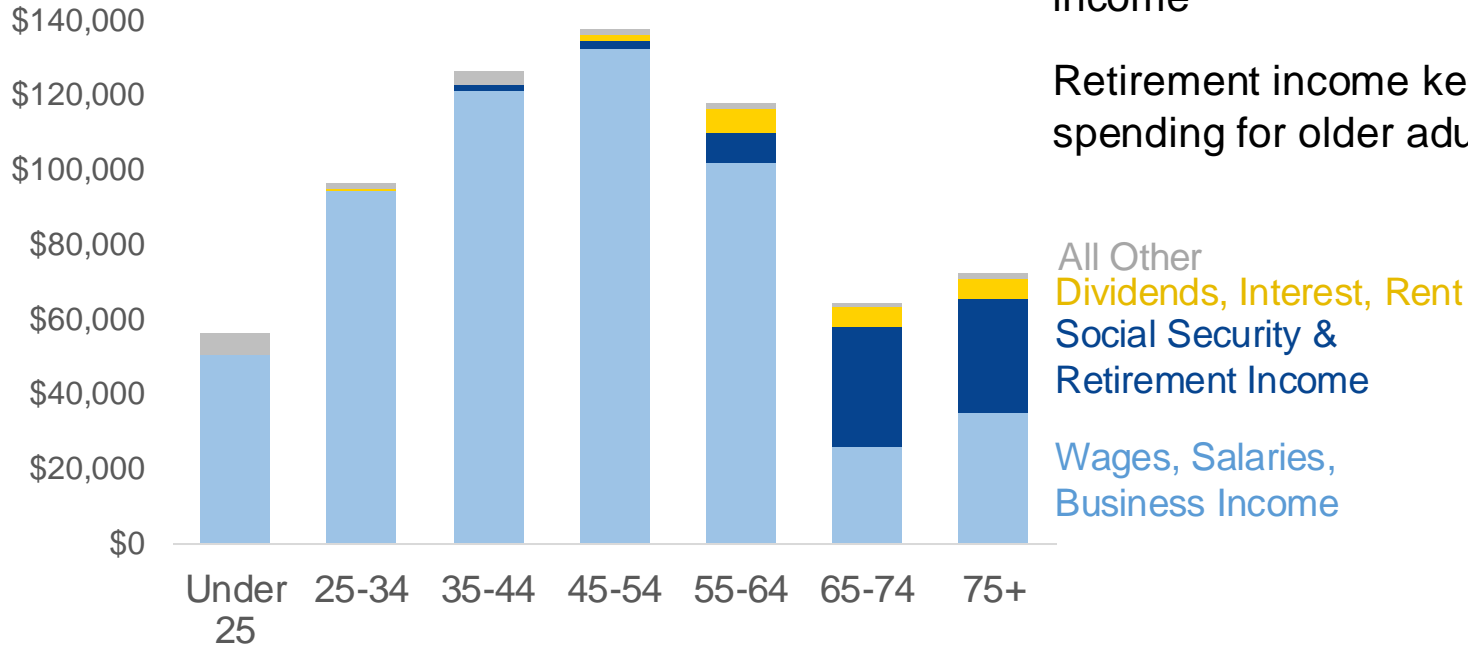


Source: State Demography Office, vintage 2023 estimates and projections.
Interactive visuals available at: <https://gis.dola.colorado.gov/Age-Animation-Bars>

U.S. Income by Age



Average Income by Age, 2023



Labor force participation drives income

Retirement income key to sustain spending for older adults

All Other
Dividends, Interest, Rent
Social Security & Retirement Income
Wages, Salaries, Business Income

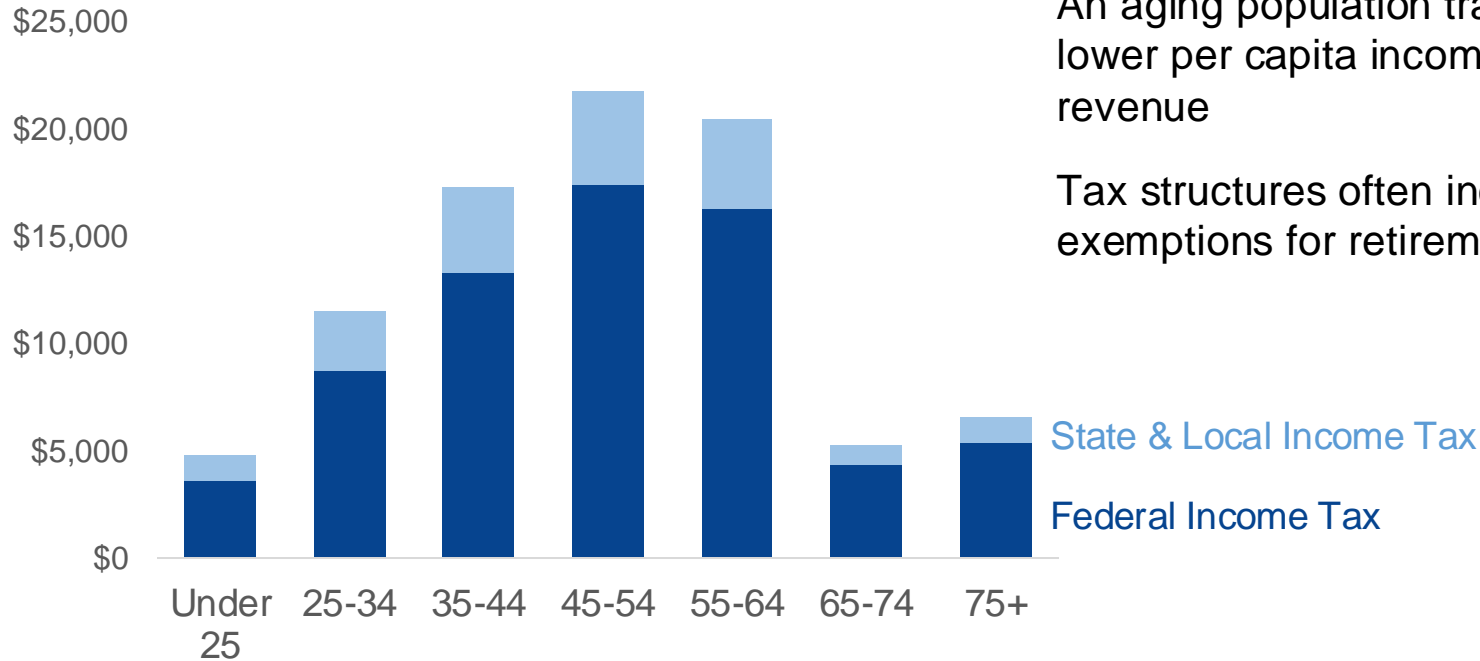


Source: U.S. Bureau of Labor Statistics, Consumer Expenditure Survey.

U.S. Taxes Paid by Age



Average Income Taxes Paid by Age, 2023



An aging population translates to lower per capita income tax revenue

Tax structures often include exemptions for retirement income

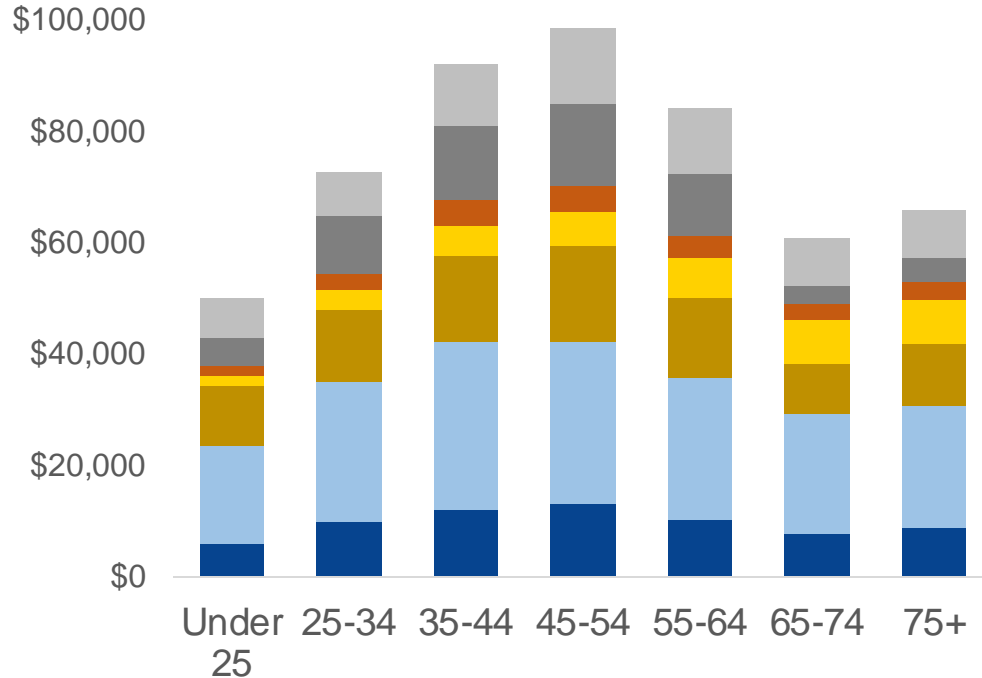


Source: U.S. Bureau of Labor Statistics, Consumer Expenditure Survey.

U.S. Spending by Age



Average Spending by Age, 2023



An aging population translates to lower per capita sales tax revenue

Consumer demand will shift with age

- Food
- Housing
- Transportation
- Healthcare
- Entertainment
- Personal insurance and pensions
- All Other



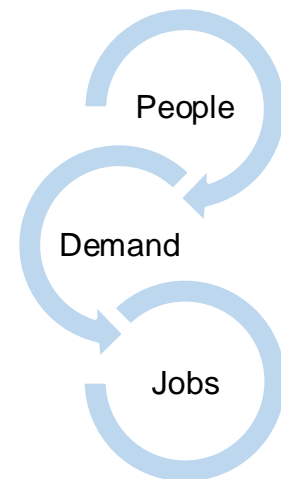
Source: U.S. Bureau of Labor Statistics, Consumer Expenditure Survey.

Aging and the Economy



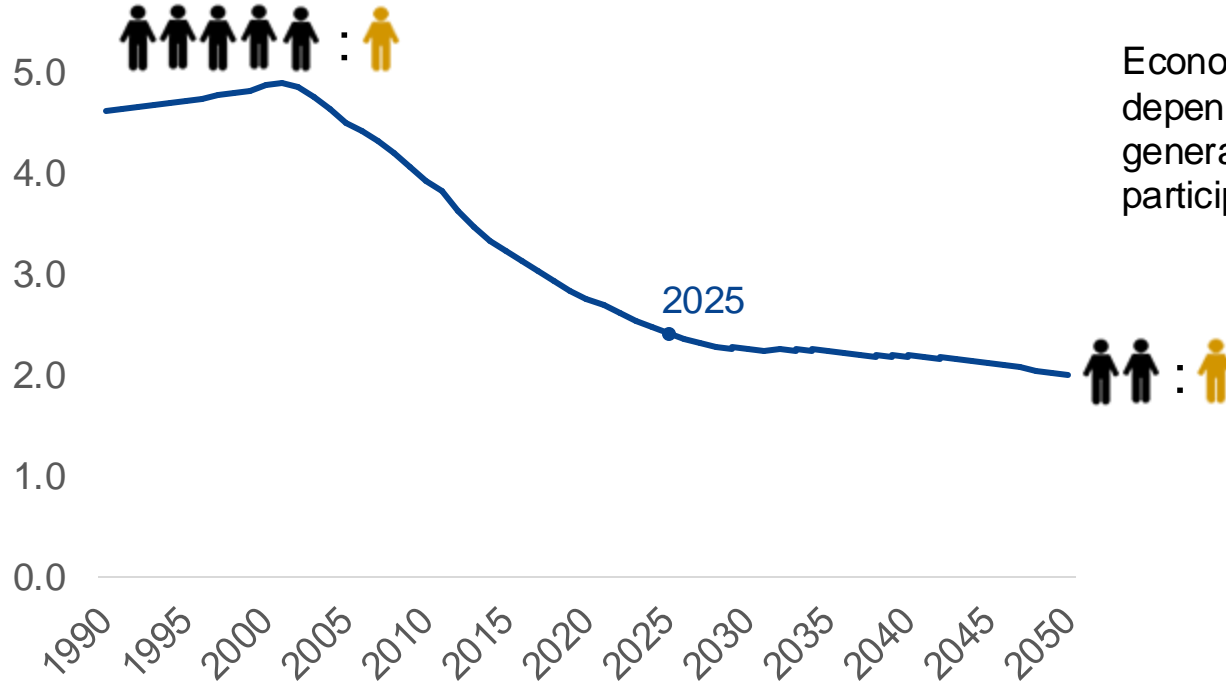
Labor Force

- Faster growth in retirees (expecting 40,000/year statewide)
- Eldercare may dampen labor force participation
- Lower fertility rates mean slower growth in new labor force entrants
- Young entrants are more diverse
- Positive net migration is needed to meet demand for jobs
- More competition for talent within and outside of Colorado



Workers vs. Retirees in Colorado

Ratio of those Age 25 to 54 to those 65+



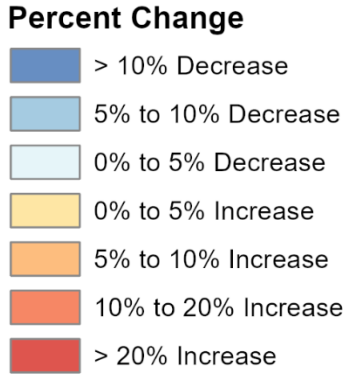
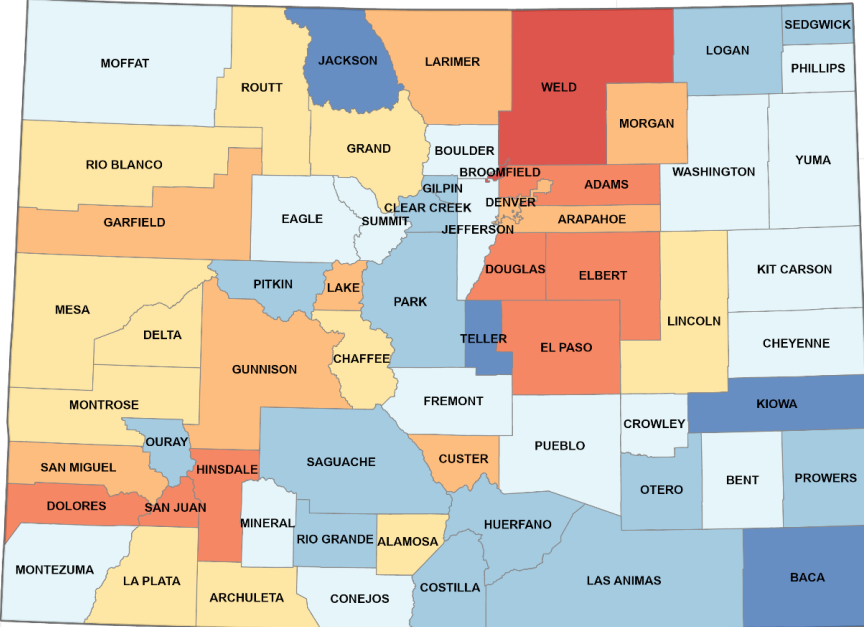
Economic impacts of aging will depend on several factors including generational wealth and labor force participation among those 65+



Source: State Demography Office, vintage 2023 estimates and projections.
<https://demography.dola.colorado.gov/assets/html/population.html>

Declines in the traditional working age population expected in half of Colorado's counties

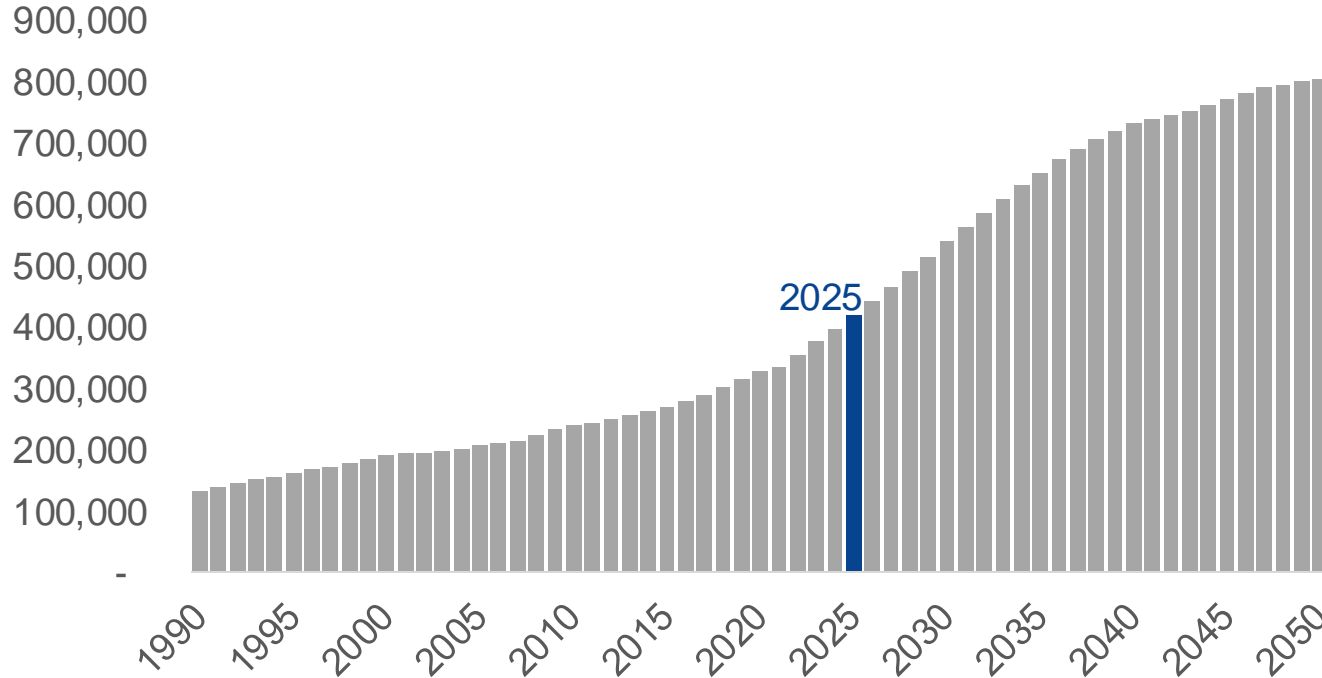
Forecast Change in 16 to 64 Year Old Population, 2020 to 2030



Source: State Demography Office, vintage 2023 estimates and projections.
<https://demography.dola.colorado.gov/assets/html/population.html>

The 75+ population is the fastest growing cohort

Population Aged 75+



Health issues and need for great assistance tend to increase at age 75+

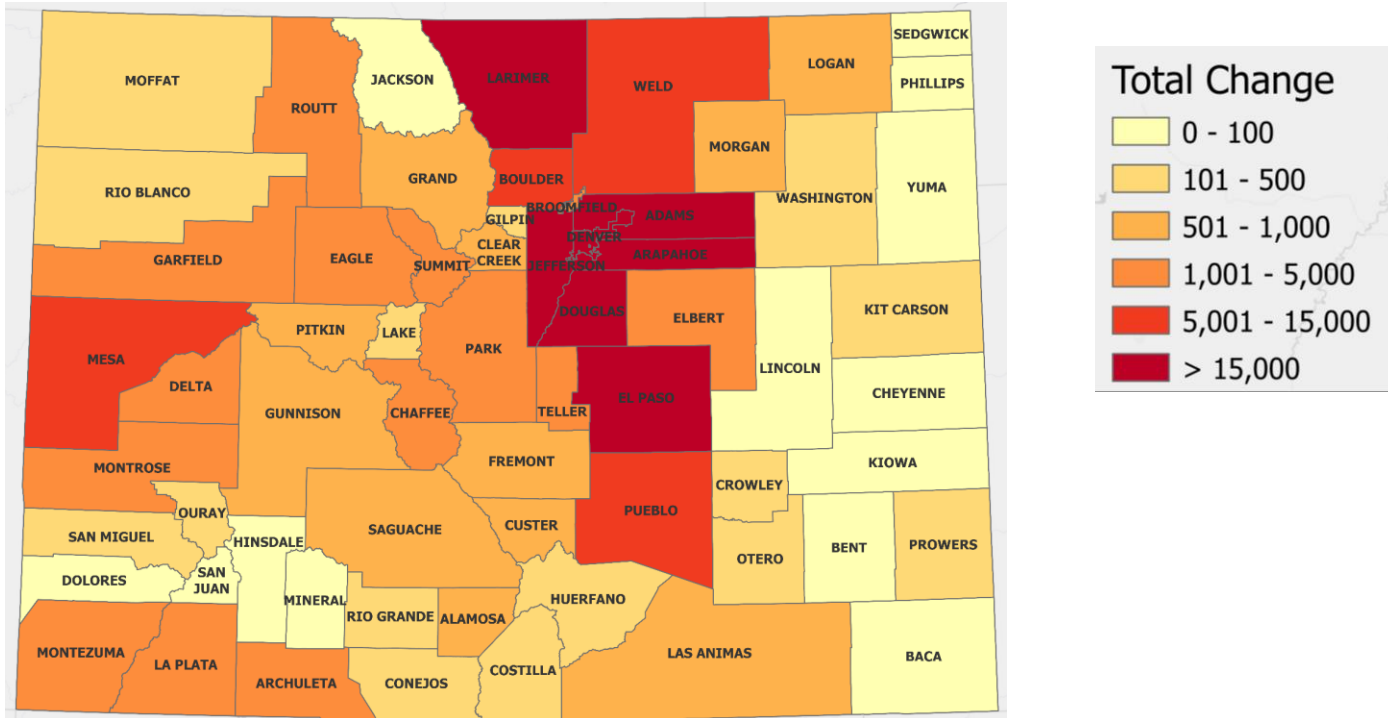
230,000 new 75+ year olds expected over the next 10 years (56% increase)



Source: State Demography Office, vintage 2023 estimates and projections.
<https://demography.dola.colorado.gov/assets/html/population.html>

Change in the Age 75+ Population

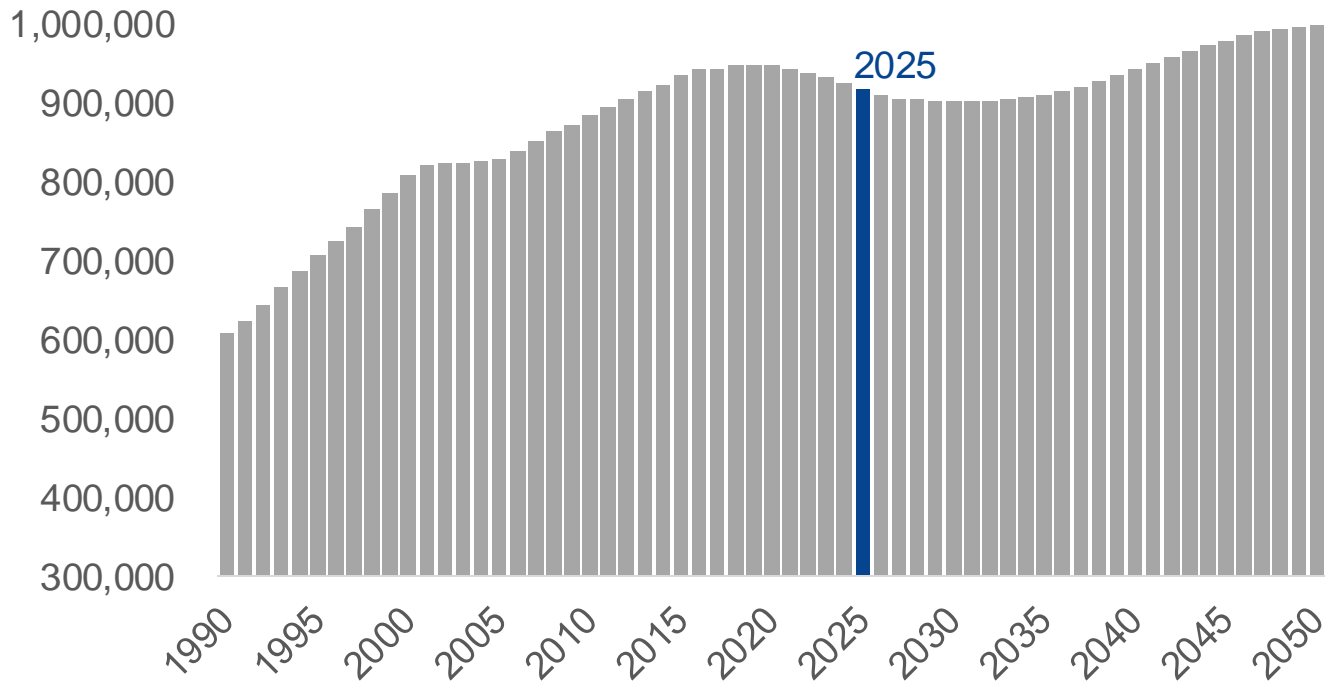
Forecast Change in 75+ Year Old Population, 2020 to 2030



Source: State Demography Office, vintage 2023 estimates and projections.
<https://gis.dola.colorado.gov/AgeMap/>

School Age Population

Population Aged 5 to 17



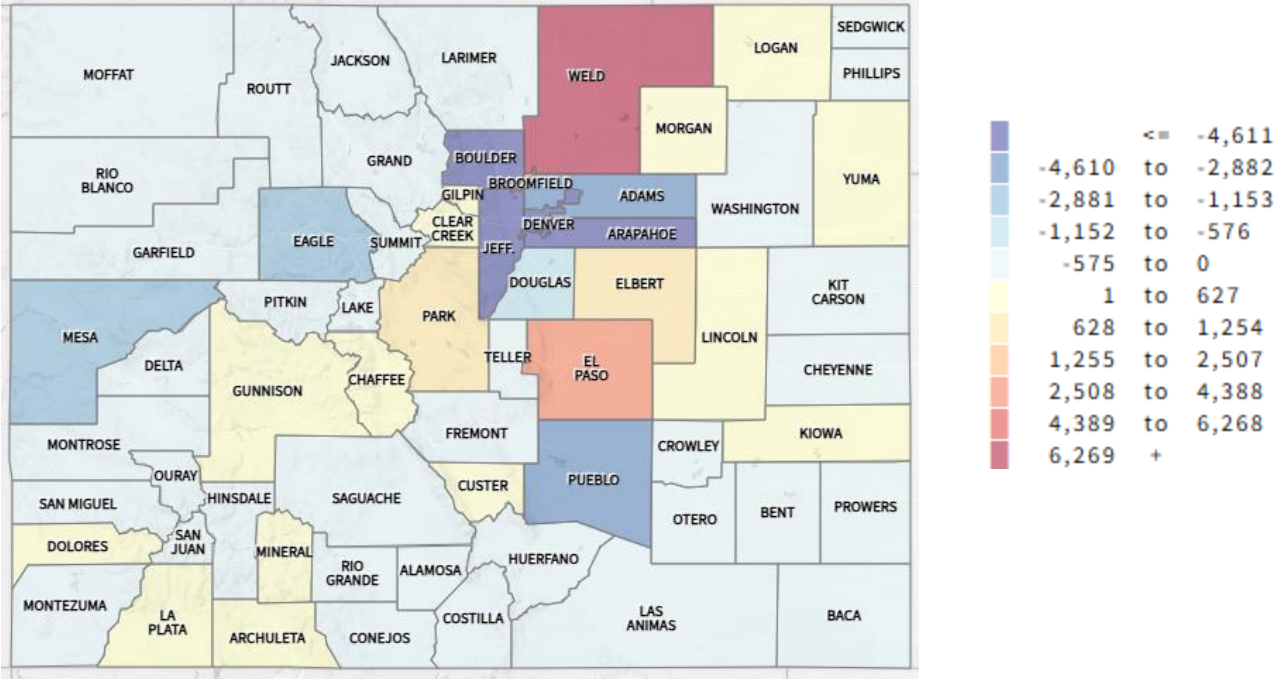
School age population expected to stabilize as more Millennials start families



Source: State Demography Office, vintage 2023 estimates and projections.
<https://demography.dola.colorado.gov/assets/html/population.html>

Change in the School Age population

Forecast Change in Age 5 to 19 Population, 2020 to 2030



Source: State Demography Office, vintage 2023 estimates and projections.
<https://gis.dola.colorado.gov/AgeMap/>

Strategic Growth *and* Strategic Shrinkage

- Is population growth good?
- How do we grow economies (or rethink economic growth) when our populations decline?
- How do we develop communities able to adapt to slower growth, smaller populations, and aging?
- How might we leverage technology and other resources to live better?
- How do we attract and retain talent in a competitive labor market?



Questions?

Kate Watkins

kate.m.watkins@state.co.us

demography.dola.colorado.gov



COLORADO

Department of Local Affairs