



*How to Leverage GBD-Led
State Incentives & Respond
to RFIs to Benefit
Local Communities*

EDCC Drive Lead Succeed // October 14, 2024



COLORADO

Office of Economic Development
& International Trade

Global Business Development



Contents

1. LEVERAGING GBD-LED STATE INCENTIVES
2. OEDIT RFI's
3. LOCAL COMMUNITY BUSINESS ATTRACTION
4. QUESTIONS & FEEDBACK



Leveraging GBD-Led State Incentives



COLORADO
Office of Economic Development
& International Trade
Global Business Development



Leveraging GBD-Led State Incentives

BACKGROUND ON OEDIT

***Multiple OEDIT divisions provide incentives and grants that benefit local communities -
Please always reach out to us if you would like to learn more about them!***



Leveraging GBD-Led State Incentives

GBD INCENTIVES FOR BUSINESS ATTRACTION & GROWTH

INCENTIVES TO ATTRACT OUT-OF-STATE BUSINESSES OR EXPANSIONS

Job Growth Incentive Tax Credit (JGITC)

- Gives businesses a Colorado state income tax credit equal to 50% of FICA tax (Federal Insurance Contributions Act) per net new job for 8 years.

Strategic Fund (SF)

- Provides cash payments of up to \$6,500 per job over five years to companies that create and maintain new permanent jobs in Colorado.

Enterprise Zones (EZ)

- Businesses are eligible for state income tax credits and sales and use tax exemptions to spur economic growth in distressed communities

INCENTIVES TO SPUR QUANTUM INDUSTRY (GBD + BF&I)

Colorado Quantum Fund for Business Development

- 100% Refundable tax credits should lender that make favorable loans for quantum companies incur losses (up to 15% of loan)

Colorado Quantum Fund for Shared Facilities

- 100 % Refundable state income tax credit for eligible capital expenditures on property meant for developing a shared collaborative quantum laboratory

INCENTIVES TO SPUR SEMICONDUCTOR INDUSTRY

CHIPS Refundable Tax Credit

- A company has to earn tax credits through another program to be refunded; eligible tax credits are: EZ or JGITC tax credits
- A taxpayer that holds a refund certificate may claim a refund of 80 percent of the income tax credit

CHIPS Zones

- Municipalities & counties can apply through OEIT to establish a CHIPS Zone; companies in a CHIPS Zone have access to the following EZ credits: Job training Tax Credit, Commercial Vehicle Investment Tax Credit, Business facility new employee tax credit, Research and development tax credit

INCENTIVES FOR COLORADO BUSINESSES

Advanced Industries Accelerator Programs

- Supports the development and commercialization of innovative and disruptive technologies in Colorado's seven advanced industries:
ADVANCED MANUFACTURING | AEROSPACE | BIOSCIENCE | ELECTRONICS | ENERGY & NATURAL RESOURCES | INFRASTRUCTURE ENGINEERING | TECHNOLOGY & INFORMATION
- Includes Proof-Of-Concept grant, Early-Stage Capital grant, Infrastructure Grant, Export Grants, and access to a Global Consultant Network

Leveraging GBD-Led State Incentives

QUANTUM TAX CREDITS

EDA QUANTUM TECH HUB DESIGNATION

- In July 2024, the *Economic Development Administration (EDA)* selected *Elevate Quantum (EQ)* - a consortium of private and public sector organizations, academic institutions and nonprofits across Colorado, New Mexico and Wyoming - for \$40.5 million in funding as part of its Tech Hub grant funding.
- To further promote the growth of Colorado’s quantum ecosystem, the Colorado General Assembly passed and Governor Polis signed bipartisan legislation that invests an additional \$74 million across two incentive programs that will reduce growth barriers and ensure a bright future for all Coloradans:

COLORADO QUANTUM FUND FOR BUSINESS DEVELOPMENT

To improve access to capital for quantum companies, lenders are encouraged to make favorable loans to quantum companies by registering up to 15% of the loan in a pooled loan loss reserve. The reserve is funded with a 100% refundable tax credit should the lender incur losses associated with those loans.

COLORADO QUANTUM FUND FOR SHARED FACILITIES

Eligible capital expenditures on property meant for the purpose of developing a shared collaborative quantum laboratory space and procuring professional quantum laboratory equipment are eligible for a 100% refundable state income tax credit.



Leveraging GBD-Led State Incentives

SEMICONDUCTOR

- GBD has three NEW programs that are designed to help develop semiconductor operations within the state:
 - CO CHIPS Refundable Tax Credits
 - CO CHIPS Zones
 - CO CHIPS Community Support Program

- CO CHIPS Refundable Credits
 - A mechanism for companies to trade in earned credits for a cash refund from the DOR
 - Can be used against JGITC or 5 EZ Credits
 - First 2 years for semiconductors, then years 3 to 5 open to advanced manufacturing

- CO CHIPS Zones
 - Community-designated areas in which semiconductor companies can access 5 EZ Credits (the same 5 that apply to the refund program)
 - Cannot overlap with an existing Enterprise Zone
 - Applying communities must include a resolution from governing body (city council/county commissioners)



- CO CHIPS Community Support Program (CCCS)
 - Suite of three grants for communities to identify, invest in, and market assets relevant to semiconductor or advanced industry operations:
 - Market Study Grant
 - Implementation Grant
 - Marketing Grant

 - Eligible applicants include sub-state governments and regional EDOs
 - Cycle 1 awardees included Southern Colorado Economic Development District and Grand Junction Economic Partnership
 - Cycle 2 open through November 15

Leveraging GBD-Led State Incentives

JOB GROWTH INCENTIVE TAX CREDIT

- The *Job Growth Incentive Tax Credit (JGITC)* is an eight-year job creation incentive to support competitive, multi-state, or country relocation and expansion projects, and gives businesses a Colorado state income tax credit equal to 50% of the FICA (Federal Insurance Contributions Act) tax paid by the business per net new job for each calendar year in the credit period.
- A company applying for the JGITC must fulfill the following criteria:
 - The project must be competitive; they have to consider other countries or states outside of Colorado
 - The company must create at least 20 new net jobs over 8 years
 - The average annual wage (AAW) of the new employees has to be equal or higher than the AAW of the county where the project is located
- Each project will be vetted by OEDIT and brought forward at the monthly EDC meeting



INCENTIVES TO ATTRACT OUT-OF-STATE BUSINESSES

- Job Growth Incentive Tax Credit (JGITC)**
 - Businesses that create or expand jobs in Colorado receive a credit equal to 50% of the FICA tax paid by the business per net new job for each calendar year in the credit period.
- Strategic Fund (SF)**
 - Provides up to \$100,000 per job over five years to companies that create or expand jobs in Colorado.
- Enterprise Zones (EZ)**
 - Encourages economic development in underdeveloped areas by providing tax incentives to businesses that create or expand jobs in the zone.

INCENTIVES TO SPUR QUANTUM INDUSTRY

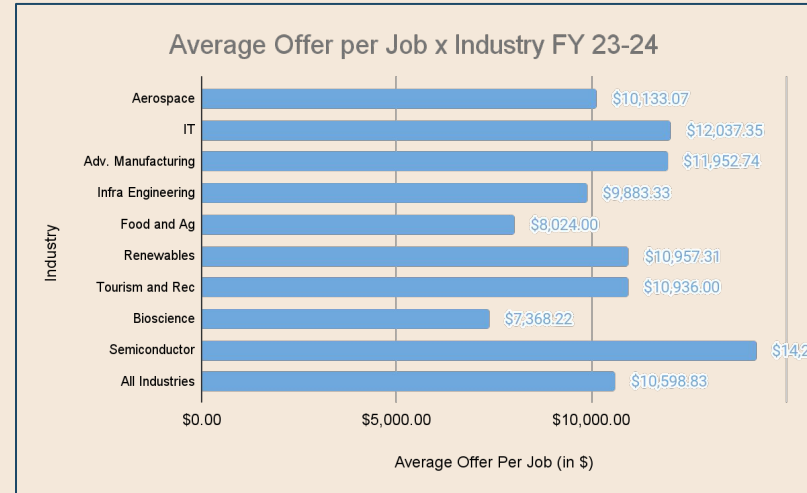
- Colorado Quantum Fund for Business Development**
 - Provides up to \$100,000 per job over five years to companies that create or expand jobs in the quantum industry.
- Colorado Quantum Fund for Shared Facilities**
 - Provides up to \$100,000 per job over five years to companies that create or expand jobs in the quantum industry.

INCENTIVES TO SPUR SEMICONDUCTOR INDUSTRY

- CHIPS Incentivable Tax Credit**
 - Provides up to \$100,000 per job over five years to companies that create or expand jobs in the semiconductor industry.
- CHIPS Zones**
 - Encourages economic development in underdeveloped areas by providing tax incentives to businesses that create or expand jobs in the zone.

INCENTIVES FOR COLORADO BUSINESSES

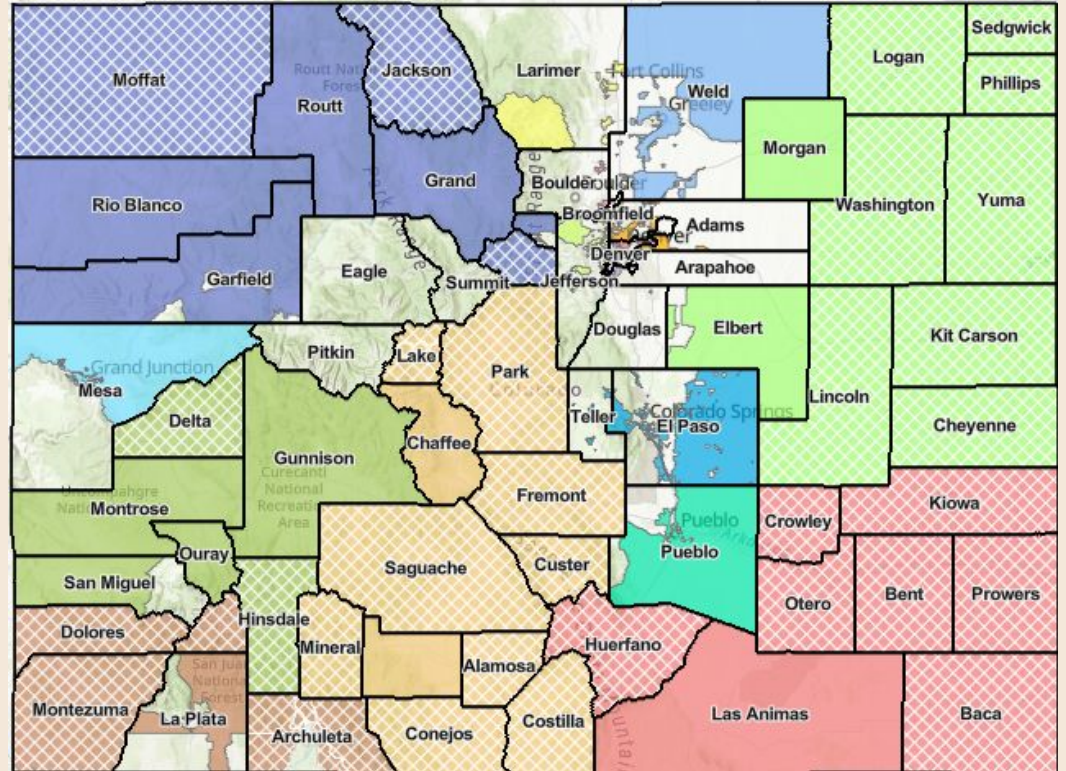
- Advanced Industries Accelerator Program**
 - Provides up to \$100,000 per job over five years to companies that create or expand jobs in the advanced industries sector.



Leveraging GBD-Led State Incentives

ENTERPRISE ZONE

- 16 Enterprise Zones across the state
- Provides a suite of tax credits and exemptions for a range of activities for companies situated in designated Enterprise Zones
- The EZ program is an opportunity to drive economic growth aligned with regional priorities and local businesses and is overseen by local EZ Administrators



Leveraging GBD-Led State Incentives

STRATEGIC FUND

- The *Strategic Fund Job Growth Incentive (SF)* is a 5-year job creation incentive to support competitive, multi-state, or country relocation and expansion projects that have received a commitment of local government funding that matches any requested state government incentives. The incentive provides a cash payment for up to \$6,500 per net new job.
- A company applying for the SF must fulfill the following criteria:
 - The project must be competitive; they have to consider other countries or states outside of Colorado
 - The average annual wage (AAW) of the new employees has to be equal or higher than the AAW of the county where the project is located
 - The company has a local match offer. Matches are cash or something of monetary value to the company for a business development project, for example:
 - Cash, such as money per net new job, or traditional cash payments.
 - Sales tax abatement.
 - Business or real property tax reduction.
 - Waiving of building permits and fee or other taxes.
- Each project will be vetted by OEDIT and brought forward at the monthly EDC meeting



Non-Enterprise Zone	
Annual Wage %	\$ Incentive/job
100%	\$3,000
120%	\$4,000
140% or >	\$6,500

Enterprise Zone	
Annual Wage %	\$ Incentive/job
100%	\$3,000
110%	\$4,000
120%	\$5,000
140% or >	\$6,500



Leveraging GBD-Led State Incentives

STRATEGIC FUND EXAMPLE - GRAND JUNCTION ECONOMIC PARTNERSHIP



- **West Star Aviation GJT specializes in business aircraft maintenance, modifications, and refurbishment for aircraft.**
- **Weighing the costs of an expansion between their Grand Junction location and their Chattanooga location.**

EXPANSION DETAILS:

- **82 net new full-time jobs with a minimum Average Annual Salary of about \$78,000**
- **\$15.6 M in capital investment**
- **\$1 M in annual operating costs**
- **\$37 M potential economic impact to our region**





Leveraging GBD-Led State Incentives

STRATEGIC FUND EXAMPLE - GRAND JUNCTION ECONOMIC PARTNERSHIP

GRAND JUNCTION economic
PARTNERSHIP



COLLABORATION FOR STRATEGIC FUND:

- GJEP, GJ Area Chamber of Commerce , City of Grand Junction, Grand Junction Regional Airport



Annual Average Wage
100% (\$46,280)

Cash per net new job
\$6,000

Total with 82 new jobs
\$492,000 (\$246,000 paid up front)



Leveraging GBD-Led State Incentives

STRATEGIC FUND EXAMPLE - GRAND JUNCTION ECONOMIC PARTNERSHIP



WEST STAR AVIATION EXPANSION INCENTIVE PACKAGE:

- Strategic Fund Cash Incentive



Annual Average Wage
100% (\$46,280)

Cash per net new job
\$6,000

Total with 82 new jobs
\$492,000 (\$246,000 paid up front)

- Job Growth Incentive Tax Credit
- Skill Advance Colorado Job Training Grant
- MCWC Career Development Program
- City of Grand Junction Aviation Tax Exemption on Parts and Components
- Approximately \$4.3M in total incentives

RFIs (Prospect Alerts)



OEDIT RFI's (Prospect Alerts)

THE RFI PROCESS

OEDIT Receives RFI

RFI's are coming from:

- Site Selection firms, e.g., JLL, Cushman & Wakefield, Deloitte, KPMG, etc.
- Companies that have reached out to OEDIT
- Companies that GBD engaged with via conferences, trade shows, or delegations

OEDIT Sends RFI to EDO's

- OEDIT repackages the original RFI to "RFI Template"
- RFI's under 5 days: OEDIT sends out RFI to all EDO's
- RFI with more than 5 days: OEDIT sends out RFI to Metro Denver EDC for the metro region & to all other EDO's directly

OEDIT Sends Submissions to Client

- OEDIT checks if every submission satisfies the client's needs.

Note: Only complete applications will be submitted!
- OEDIT packages all submissions to one application and submits it to the client

OEDIT Supports Site Visits

- If the client is interested in a site, OEDIT coordinates call between site selector and/or company and the EDO
- OEDIT organizes agenda for site visits (with MDEDCC)

OEDIT RFI's (Prospect Alerts)

EXAMPLES OF COMMUNITY RESPONSES - NORTHERN COLORADO

Cover Letter

UPSTATE COLORADO NoCo REDI

September 11, 2024
RE: Project Bamboo

Dear Client,

On behalf of Northern Colorado (NCFD & Larimer Counties), we would like to submit the following properties to Project Bamboo. We believe these properties are highly viable for this proposed operation, based on the project criteria, and provide a highly sought-after workforce and quality of life.

Estes - Omaha Track Industrial Park
 Located in the Town of Estes, this is an established industrial rail park that is served by the Union Pac and BNSF to Income Tax workshare Airport.

Hudson - BNSF In
 This is an industrial center 1/2 mile track, but a offers land which could great trax interchanging

Mead - Access 251
 This is a 30 Home Dep Railway, Co Mead is in Northern Colorado demographic and industry information, as well as Business Assistance Overview and a Regional Labor Market Report. Thank you for considering Northern Colorado for Project Bamboo. Please let us know if there is any additional information we can provide.

Windsor - Great Western Industrial Park
 Great Western Industrial Park is a development ready, rail-served, industrial park located in Windsor, Weld County. The park has 125 acres of development ready land that can be used to support the proposed use. The land is zoned industrial, and infrastructure is in place. Once final EIR/EA Group manages the park and can provide B7D options, if needed. In addition to B7D land, the park also has an existing 500,000 SF building (2000) several levels that could be repurposed for the proposed use, with an adjacent 30 acres that could be used for future expansion. The existing building is available for lease or sale. The industrial park is served by the Great Western Railway (GreatWTRAX), which is a short line that connects to BNSF and Union Pacific rail lines. Great Western Industrial Park has great transportation access, located right off of HWY 251, it is under 5 miles to I-25, 5 miles to HWY 34, and about 55 miles to Denver International Airport.

In the attached Northern Colorado real estate proposal, we have included property information, the Northern Colorado demographic and industry information, as well as Business Assistance Overview and a Regional Labor Market Report. Thank you for considering Northern Colorado for Project Bamboo. Please let us know if there is any additional information we can provide.

Best,
Andy Herborn
 Andy Herborn
 Director of Economic Development
 Upstate Colorado Economic Development
 (970) 909-2889
andyh@upstatecolorado.edu

Adam Crowe
 Adam Crowe
 Economic Development Manager
 Larimer County EDO
 (970) 498-6641
acrowe@larimer.org


Attachments: Northern Colorado - Regional Prospect Proposal

<https://www.upstatecolorado.edu>

Regional Profile

NORTHERN COLORADO REGIONAL PROFILE
NoCo REDI

TRANSPORTATION



AIR
 DENVER INTERNATIONAL AIRPORT (DIA)
 DENVER
 NORTHERN COLORADO REGIONAL AIRPORT
 WINDSOR, CO
 CASSELL / WELD COUNTY AIRPORT
 WY/NE

REGIONAL TRANSIT
 CITY OF LOVELAND TRANSIT (COLT)
 LOVELAND, CO
 GREELY-EVANS TRANSIT (GET)
 GREELY, CO
 TRANSPO
 WY/NE

RAIL
 BURLINGTON NORTHERN SANTA FE RAILWAY
 Freight
 GREAT WESTERN RAILWAY OF COLORADO
 Freight Short Line Serviced by OmeritRAX
 UNION PACIFIC BAIERROAD
 Freight

Property Brochure

THE GREAT WESTERN INDUSTRIAL PARK
 GREATWESTERNINDUSTRIALPARK.COM

Mike Eyer
 First Vice President
 +1 970 372 3844
www.gwr.com

Danice Cicca
 Senior Vice President
 +1 720 528 6342
www.gwr.com

Tyler Carner
 Executive Vice President
 +1 303 264 1903
tyler.carner@gwr.com

© 2023 GWR. All rights reserved. This information has been obtained from sources believed reliable, but we make no warranty as to its accuracy. The above information is not intended to constitute an offer of real estate. An offer of real estate can only be made by a real estate license holder. All offers are subject to the terms and conditions of the prospectus, which can be found on our website at www.gwr.com. This information is not intended to constitute an offer of real estate. For more information, please contact the appropriate GWR representative.

Broe CBRE

3,000 Acre Master Planned Development

Park Highlights

- Access to major interstate and state highways
- Denver International Airport is only 60 minutes southeast of Windsor, CO
- Designated Foreign Trade Zone
- The Benefits available in West County Enterprise Zone
- Site planning, engineering and truck design services
- Outside storage and indoor storage solutions available





OEDIT RFI's (Prospect Alerts)

EXAMPLES OF COMMUNITY RESPONSES - STERLING, LOGAN COUNTY

Cover Letter

Logan County
Office of Economic Development
January 12, 2024

Dear Principals of Project Mars:
First off, thank you for your interest in the great state of Colorado! We are pleased to submit site and community information for you to consider for the project.
After reviewing the OEDIT Prospect Alert I was excited about how well this fits our area. As a representative for Logan County and the City of Sterling, there are several factors that align our community well with the project needs.
As the top agricultural region of Colorado, Northeast CO is a great location for this project and operation. Logan County is heavily ag based offering opportunities for Project Mars in the local market, but also in close proximity to other heavy ag areas in the state.

For this project we have two prime areas to consider for a location. Both will offer rail access, energy needs, and plenty of open land to meet the needs of any future growth plans. Site 1 is the Sterling Sugar Factory. With an existing warehouse building of nearly 20,000 square feet, the facility could quickly be retrofitted to meet your needs. The site is also served by both Class 2 National, Union Pacific and Burlington Northern Santa Fe. Site 2 is the State Land Board site. Offering up to 1200 acres with a multitude of parcel options for a project to locate. The site has rail access from the Cheyenne/Sterling, Nebraska Kansas Colorado Railroad. This site is a greenfield location and would not have any existing structures to view.

Thank you for considering Logan County and for the opportunity to work with your team on this project. As an ag community, we greatly value the opportunity to grow industry in the area that complements our existing ag values and infrastructure. I look forward to discussing with you further.

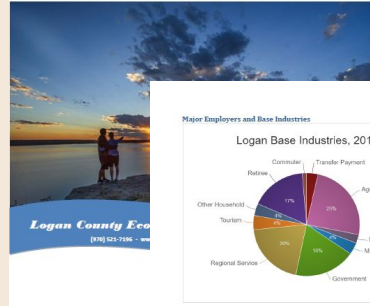
Sincerely,
Traci Miller
Traci Miller Executive Director
Logan County Economic Development Corporation
970.523.2333
Traci@Sterling-Logan.com

Logan County
Office of Economic Development

Site 1
Sterling, CO - Former Sugar Factory (See separate attached documents)

- Dual Class 1 rail service - Union Pacific and Burlington Northern Santa Fe
- Existing rail infrastructure and open on site
- Existing warehouse building 18,800 sq ft. 20' peak ceiling, 21' sidewalk, 140x120ft.
- Large acreage with 140 contiguous acres to expand or build on.
- Site has industrial water rights and industrial well.
- Zone Heavy Industrial
- Located adjacent to City of Sterling in Unincorporated Logan County
- Less than 1 mile to Interstate 76. Adjacent to US Highway 4 and CO Highway 14
- Energy Provider - Xcel Energy.

Regional Profile



Organization	Employees	Industry	Organization	Employees	Industry
Spring Creek State Facility	200	Public Admin	Colorado Interstate Road	80	Health Care
Bo & Wendy School District	370	Education	Midvale Village Town	80	Manufacturing
Denver Health	320	Health Care	BJCP Railroad	50	Transportation
Wellmark	270	Retail	Sterling Living Center	80	Health Care
Comprehensive Center College	226	Education	Trinidad School	70	Agriculture
Logan County	200	Public Admin	Sykes Enterprises	70	Business Int
City of Sterling	148	Public Admin	Wilson Kille & Pats	70	Manufacturing
Stonovich Acres	138	Health Care	Industrie Welding & Supply	65	Manufacturing
Home Depot	138	Retail	Procter and Gamble	65	Services
Western CO Inst for Dev. Dis.	138	Health Care	Sterling ethanol	55	Energy

Property Brochure

Sterling, Colorado Industrial Rail Site up to 210 acres-Sale or Lease With Gravel Mine Opportunity

- **Dual served rail** site by both the Burlington Northern Santa Fe and Union Pacific Railroads.
- **Senior water rights** and industrial well on site
- **Interstate 76** less than 1 mile.
- **Denver International Airport** 100 minutes away

Heavy industrial. Ideal server rail site with up to 210 acres in a designated Federal Opportunity Zone includes Senior surface water rights and active rail served by both the Burlington Northern Santa Fe and Union Pacific Railroads. Adjacent to city of Sterling with nearby interstate access.

ZONING

-Heavy Industrial

PARCEL

-210 acre site in unincorporated Logan County, CO.
-210 acre Sugar Beet Processing, Feedlot, Production Farming
-Various parcel sizes and configurations possible

UTILITIES

-Water and Sewer: Private industrial well onsite. Senior water rights in Sterling at Citrus. 60 shares agricultural + shares industrial. City of Sterling services adjacent.
-Electric: Xcel Energy with adjacent transmission line
-Natural Gas: Existing 6" line onsite. Service available from Black Hills Energy, Xcel, Tallgrass
-Fiber optic broadband up to 1 Gbps and multiple providers

TRANSPORTATION

-Rail access to one by both Class 1 railroads
-US Highway 6 adjacent. Interstate 76 less than 1 mile

INCENTIVE DESIGNATIONS

-Federal Opportunity Zone, State Enterprise Zone, State Rural Jump Start Zone, and Local incentives on a case-by-case basis.



Future Site Plan

*Initial Conceptual Design - (Plan may change or be altered by demand and highest and best use.)



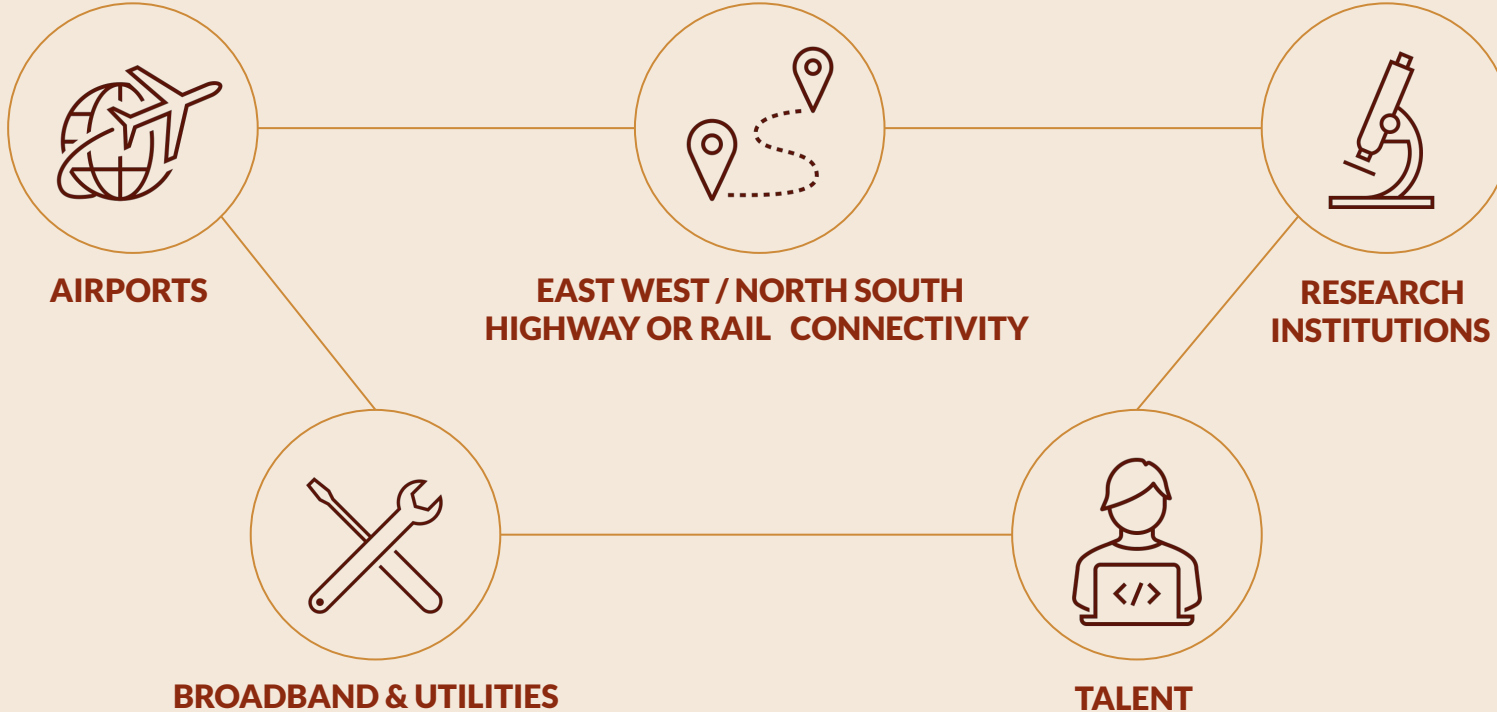
Local Community Business Attraction



COLORADO
Office of Economic Development
& International Trade
Global Business Development

Local Community Business Attraction

Top Community Attributes



Local Community Business Attraction

LOCAL PROGRAMS: PUEBLO'S SALES & USE TAX CAPITAL IMPROVEMENTS FUND



- In 1984, Pueblo voters approved a half-cent sales tax to support economic development and job creation.
- The overall economic impact of the project to the community is taken into consideration when making this award.
- Eligible uses of the fund include brick and mortar project expenses, infrastructure and in some instances

PROJECT EXAMPLE FOR USE OF FUND:



"Fomcore , a manufacturer of soft seating furniture using single cut construction announced it selected Pueblo, Colorado for the site of its new facility. The facility at full capacity will employ 87 full time workers and generate an estimated \$3,753,702 in annual pre-benefit payroll. The new factory will be located at 200 Greenhorn Dr. in the City of Pueblo."

City

Details of the project include:

- 87 guaranteed new full-time jobs with a minimum Average Base Annual Salary: \$43,146. (Pre-Benefit)
- \$1,740,000 from the City of Pueblo's half-cent fund for economic development (contingent on approval from the Pueblo City Council)
- \$10 Million investment



Local Community Business Attraction

LOCAL PROGRAMS: COLORADO SPRINGS' DEAL CLOSING FUND



- The Colorado Springs Chamber & EDC launched the Deal Closing Fund in 2022 to incentivize the creation of new, high-paying jobs and capital investment in Colorado Springs.
- Qualifying companies may be eligible to receive from \$1,000 to \$5,000 per net new full-time permanent job created. Maximum incentive levels are based on the region's average annual wage.

PROJECT EXAMPLE FOR USE OF FUND:



*"We are thrilled to welcome **Boecore** to Colorado, bringing over 620 new good-paying jobs to Colorado. We are the proud home of the innovative, robust aerospace industry and continue taking bold action to make sure Colorado remains the best place to live, work, and do business." said Gov. Polis*

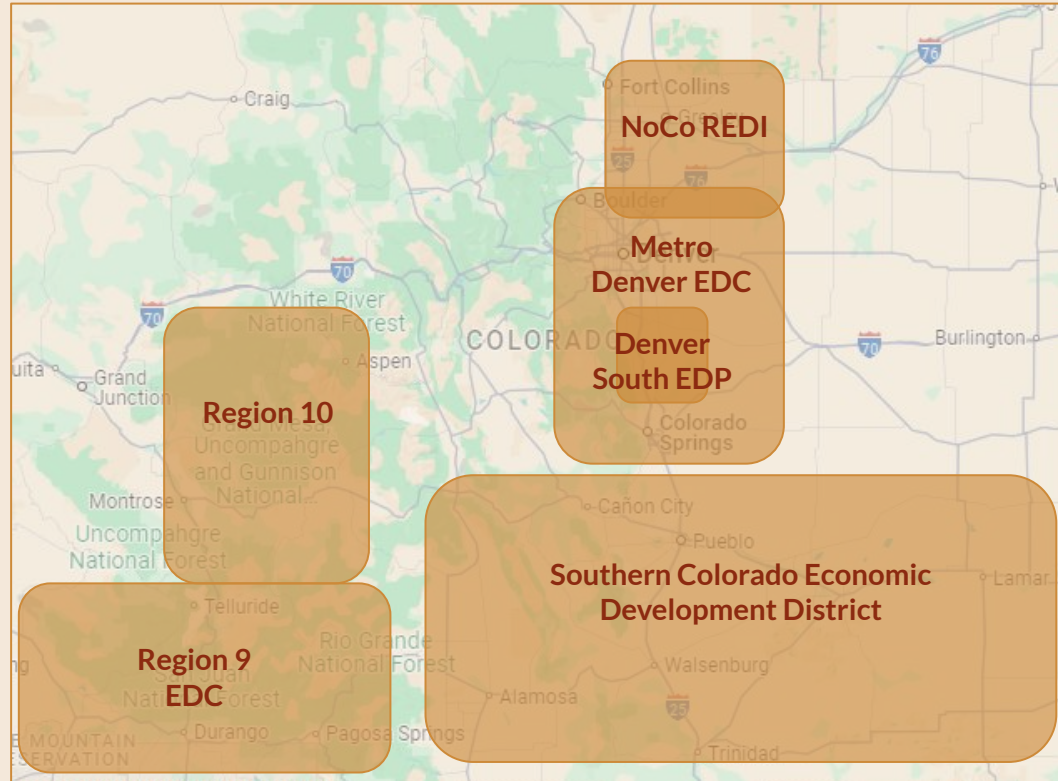
Details of the project include:

- 620 new net jobs with an average annual salary of \$160,484
- \$671,626 local incentive package that includes the Colorado Springs Deal Closing Fund , a job creation grant, as well as a city economic development agreement
- \$7,499,388 in performance-based Job Growth Incentive Tax Credits (OEDIT)

Local Community Business Attraction

A REGIONAL APPROACH

Regional EDO's can support the mutual growth of a region's talent and businesses, while also recruiting new talent and new businesses.



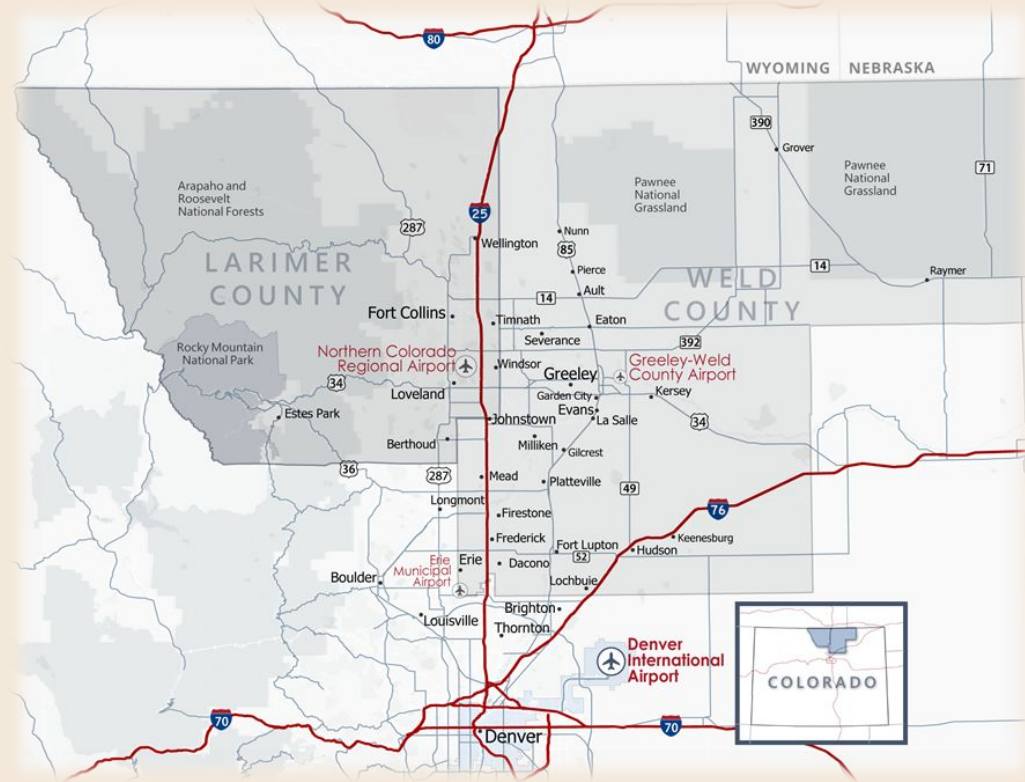
Local Community Business Attraction

NoCo REDI - Northern Colorado Regional Economic Development Initiative

LARIMER COUNTY AND WELD COUNTY

*COMMUNITIES ARE CONNECTED BY ROADS,
MUNICIPALITIES, BUSINESS RELATIONSHIPS AND
WORKER COMMUTES.*

The objective of this collaboration is to increase Northern Colorado's economic growth, resilience, and improve the business ecosystem. As a **network of economic developers**, Chambers of Commerce, and Workforce professionals, REDI develops and manages regional economic development strategy and assists businesses looking to locate or grow in the area.



Local Community Business Attraction

NoCo REDI - “We Are One Economy”

The Northern Colorado Regional Economic Development Initiative represents a network of economic development organizations working to coordinate regional economic development efforts.

“No Wrong Door” – We recognize that limiting the information we provide to companies doesn’t help land projects. One of the first questions we ask is where a company is looking.

Network of Economic Development Professionals – Providing regional stewardship in the attraction of new opportunities. Members also include the regional Chambers of Commerce, and Larimer & Weld County Workforce Centers

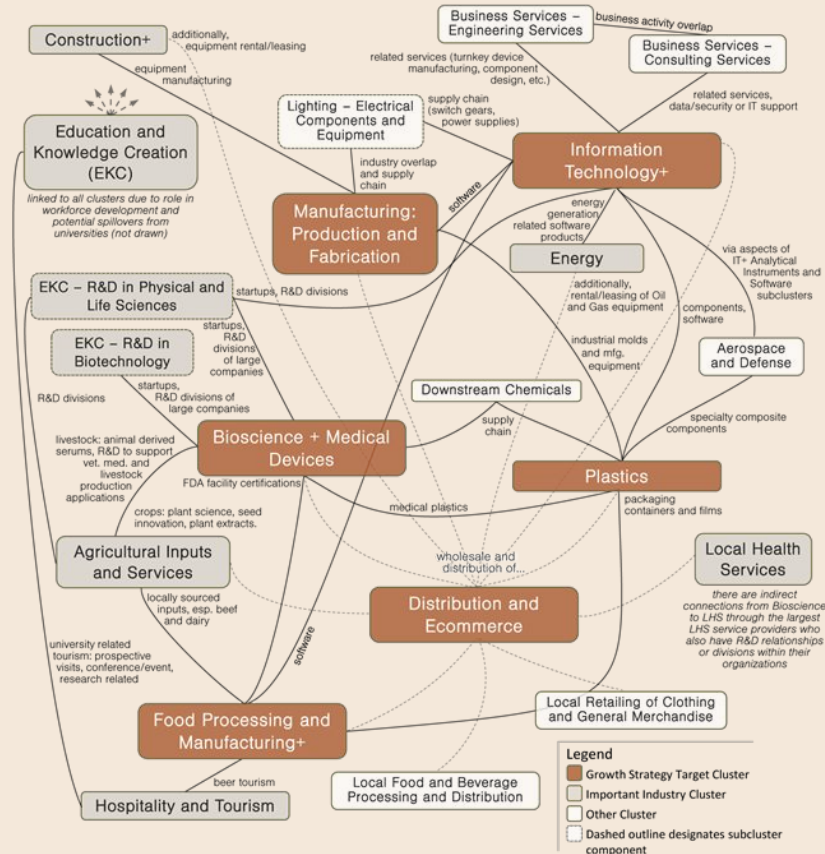
Shared Regional Marketing Materials –

- Northern Colorado Regional Profile
- Northern Colorado Cluster Study
- Northern Colorado Workforce Report(s)
- Northern Colorado Regional Assets



Local Community Business Attraction

NoCo REDI - Supporting Common Goals that Benefit the Region

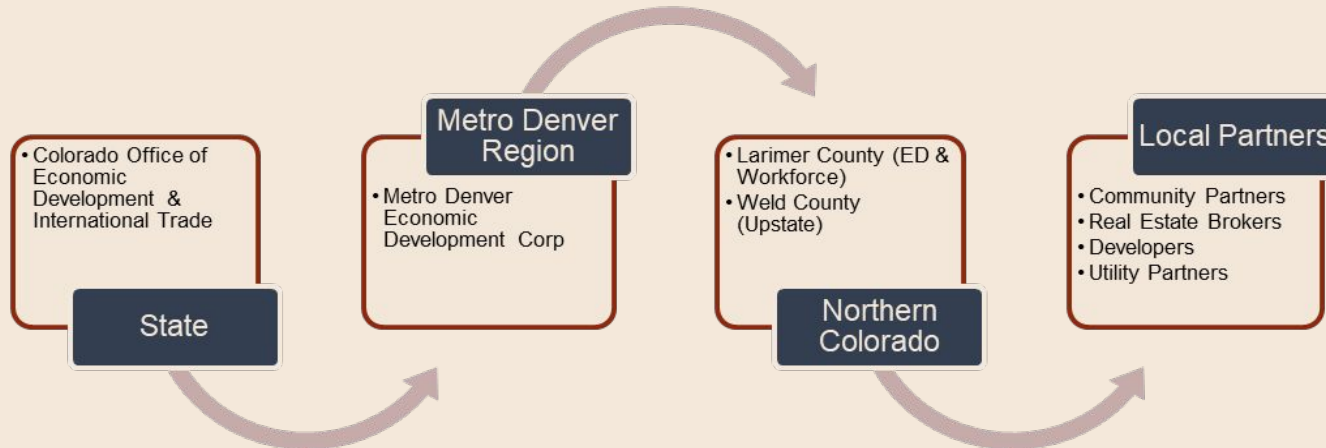


Local Community Business Attraction

NoCo REDI - Coordinated Attraction and Regional Marketing

Regional Coordination and Process – When a company is considering both Larimer and Weld Counties, we work closely with our municipal and utility partners to provide a comprehensive, coordinated, and unified response as Northern Colorado.

Being Responsive with Limited Time – To support aggressive response timelines of prospects, that are within our targeted industries, we maintain detailed information on key sites/buildings, as well as our prepared demographic, industry, and workforce materials.



Questions & Feedback?



We'd Love Your Input

Survey on Colorado's Key Industries

- In 2016, OEDIT and several other state agencies, defined Colorado's 14 Key Industries.
- Now, eight years later, OEDIT and its stakeholders recognize that these industries have become too broad and cumbersome.
- With support of BCG, OEDIT is redefining the state-wide Key Industries to better focus promotional efforts and tracking of growth in sectors that are strategically located in Colorado and have significant impact on the state's economy.

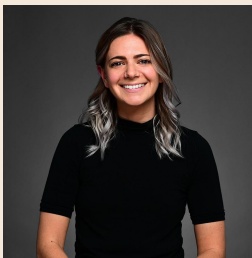
*Please complete this 5 minute
survey to share your input with
OEDIT.*



Contact Us!



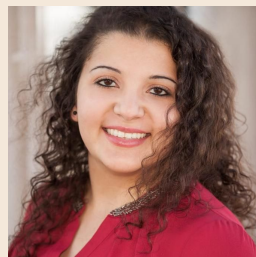
Dana Bakshani
Global Business Development Manager
OEDIT
Email: dana.bakshani@state.co.us
Phone: 303.824.9803



Alison Karp
Senior Program Manager for Quantum Tax Credits
OEDIT
Email: alison.karp@state.co.us
Phone: 303.519.0172



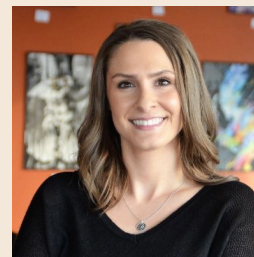
Daniel Salvetti
Semiconductor Industry Manager
OEDIT
Email: daniel.salvetti@state.co.us
Phone: 720.601.5055



Rama Haris
Advanced Industries Senior Manager
OEDIT
Email: rama.haris@state.co.us
Phone: 303.824.9768



Steve Jozefczyk
Deputy Director
Grand Junction Economic Partnership
Email: steve@gjep.org
Phone: 970.245.4332 x4



Audrey Herbison
Director of Economic Development
NoCo REDI & Upstate Colorado
Email: a herbison@upstatecolorado.org
Phone: 970.356.4565

Thank you!



COLORADO

Office of Economic Development
& International Trade

Global Business Development