

Rural Collaboratives

An Opportunity to Expand Post-Secondary Opportunities and College and Career Pathways through Regional Collaboration



The Problem

WORKFORCE IMBALANCE

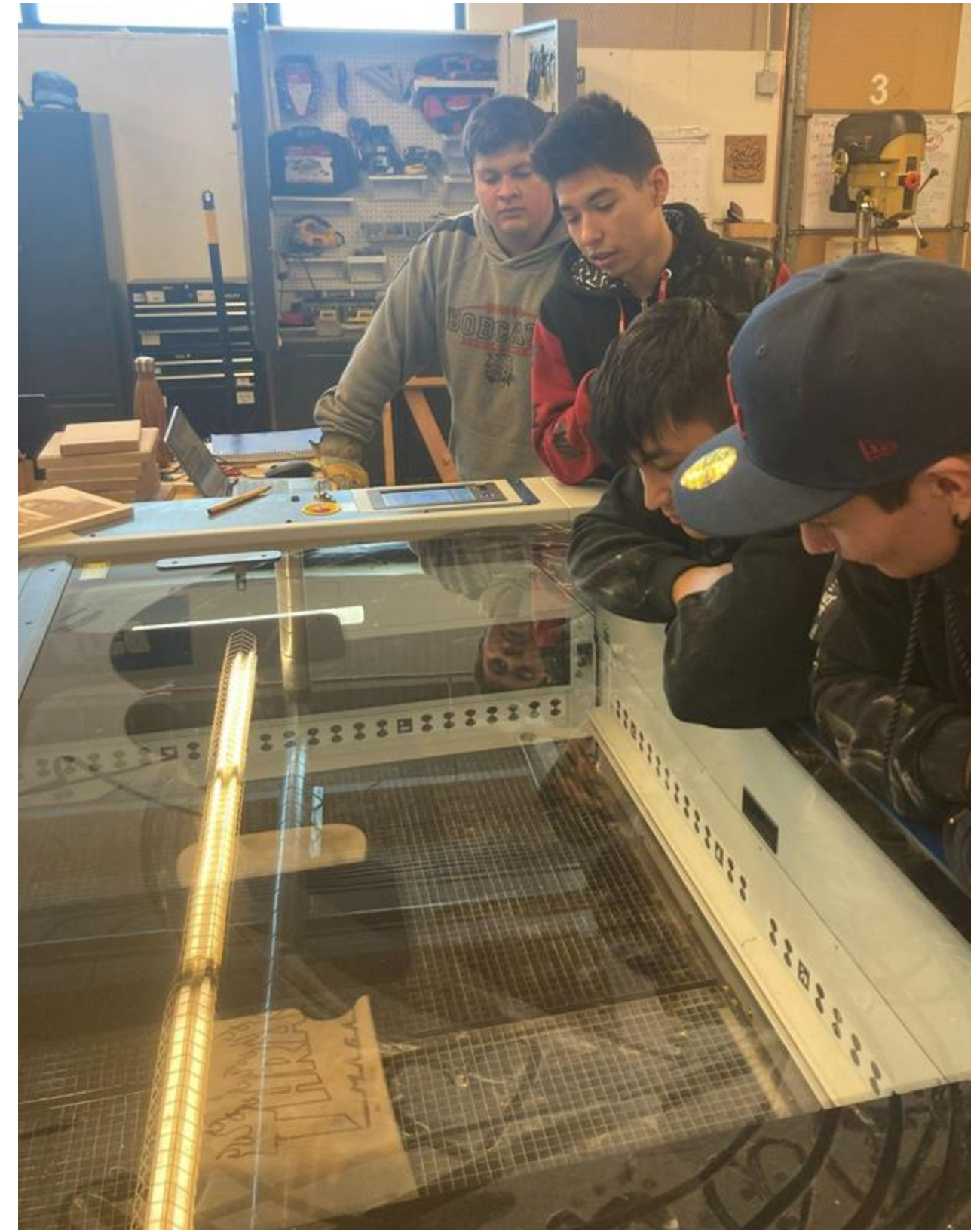
Colorado currently has two available jobs for every unemployed person in the state.

TRAINING REQUIRED

More than 90% of top jobs that provide a living wage require a postsecondary education or training

UNDERGRADUATE DECLINE

Colorado resident undergraduate postsecondary enrollment has declined by 8% since 2010.



The Opportunity



COURSEWORK ATTAINMENT

Students can be completing Career & Technical Education (CTE) and concurrent enrollment courses for college credit while in high school for free

HIGH VALUE INDUSTRY CREDENTIALS

Students can leave high school with in-demand industry credentials leading to high-wage careers

ON THE JOB WORK EXPERIENCES

Students can engage in real work through internships, pre-apprenticeships, and apprenticeships to assess job fields for skill fit and interest

A career pathway program offers a clear sequence of stackable credits and credentials, combined with support services, which enables students and job-seekers to secure industry-relevant skills, certifications, and credentials and advance to higher levels of education and employment in high-demand occupations. - CWDC

How to Meet the Opportunity in Rural Together

Pathways Boost Local Economies

The most effective partnerships bring together K-12, higher education, and industry to formally partner to build pipelines of qualified, young candidates to fill the most-needed jobs.



2+ Public School Districts

Member school districts formally agree to host and resource pathway courses. These agreements allow students access to expand resources while remaining enrolled in their home district.



1+ Institution of Higher Education

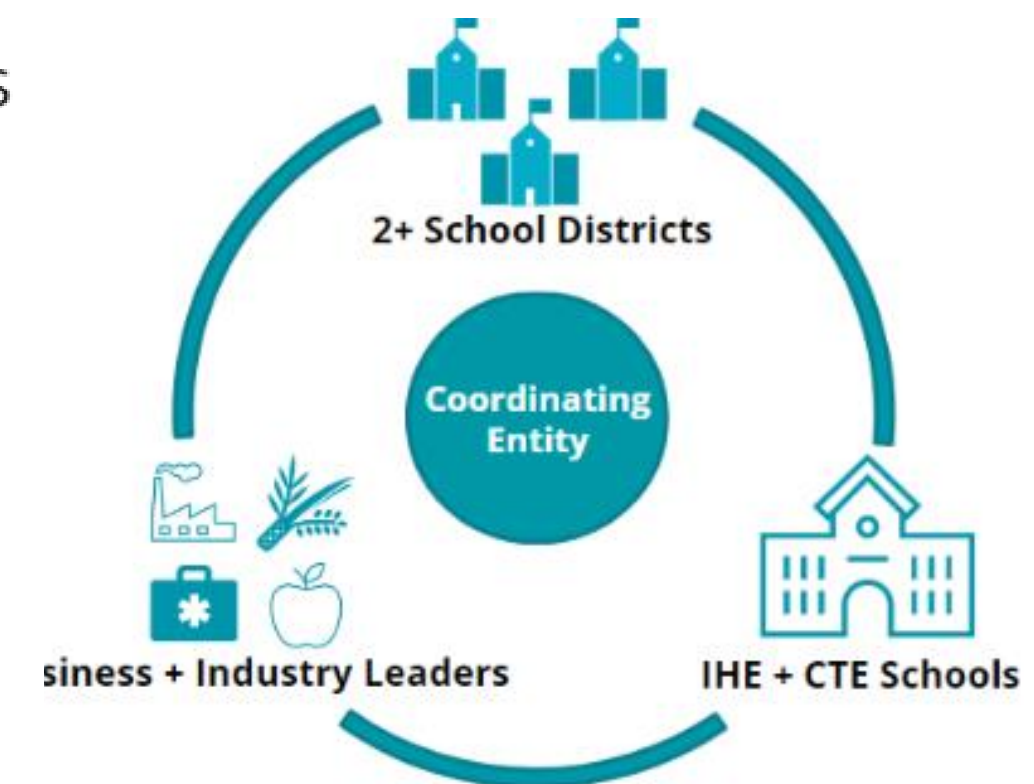
Colleges and universities provide post-secondary qualified instruction allowing students to earn certifications, college credit, and degrees, all before graduation.



1+ Industry Partner per Pathway

Business leaders care about nurturing local talent. Partnering with industry leaders means on-the-job training for students who make connections with employers as they are building their skillset.

Rural Collaborative



One Example: Southwest Colorado Education Collaborative

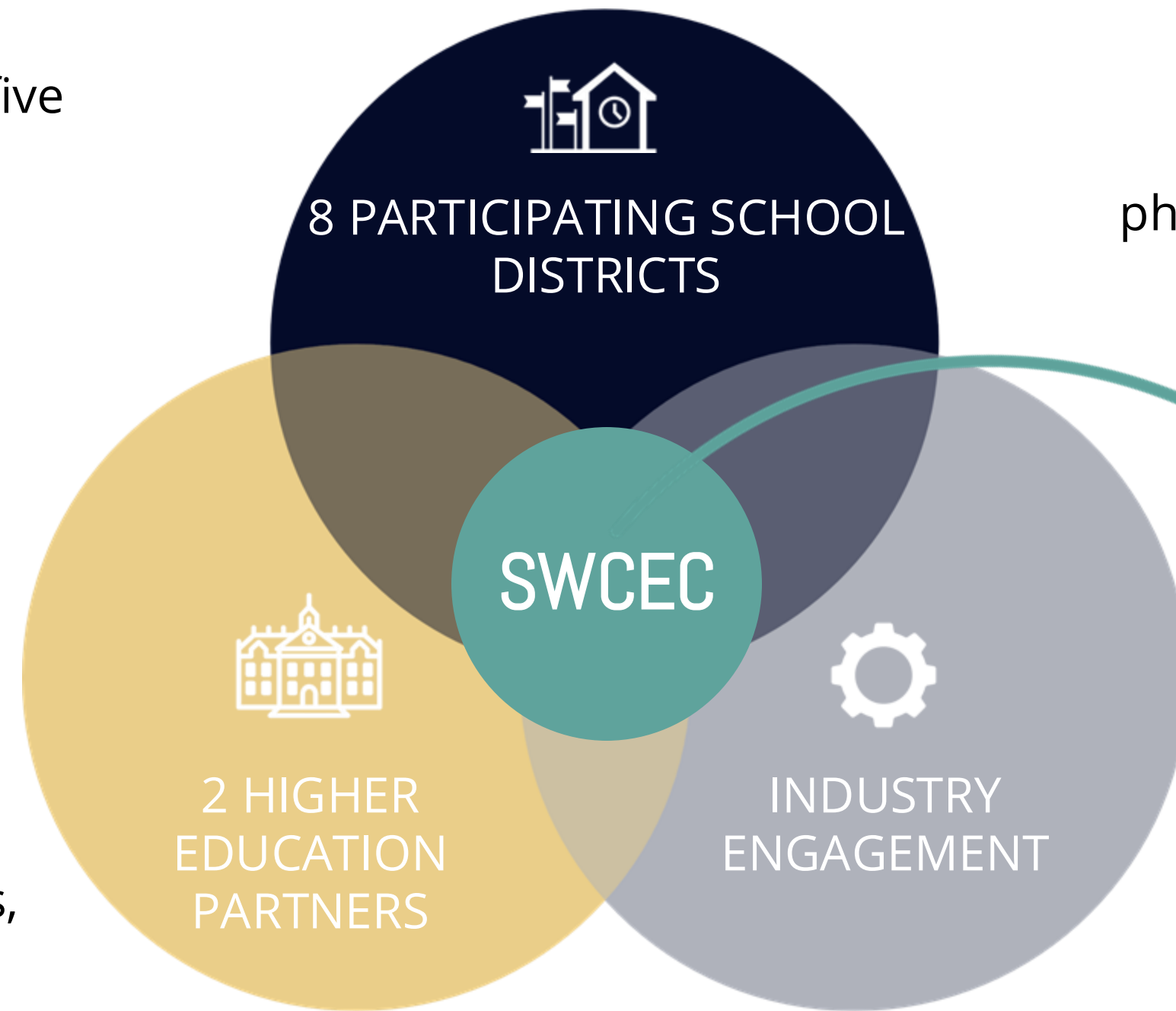
CAREER PATHWAYS

The Collaborative organizes five shared pathways:

- BUILDING TRADES
- ENVIRONMENTAL
- HEALTH SCIENCES
- EDUCATOR
- HOSPITALITY & TOURISM

PATHWAY FEATURES

Pathways feature CTE and concurrent enrollment courses, mobile learning labs, and a variety of work-based learning opportunities.



FUNDING

SWCEC was awarded multiple competitive grants, receives philanthropic funds, and districts and higher education partners financially contribute.

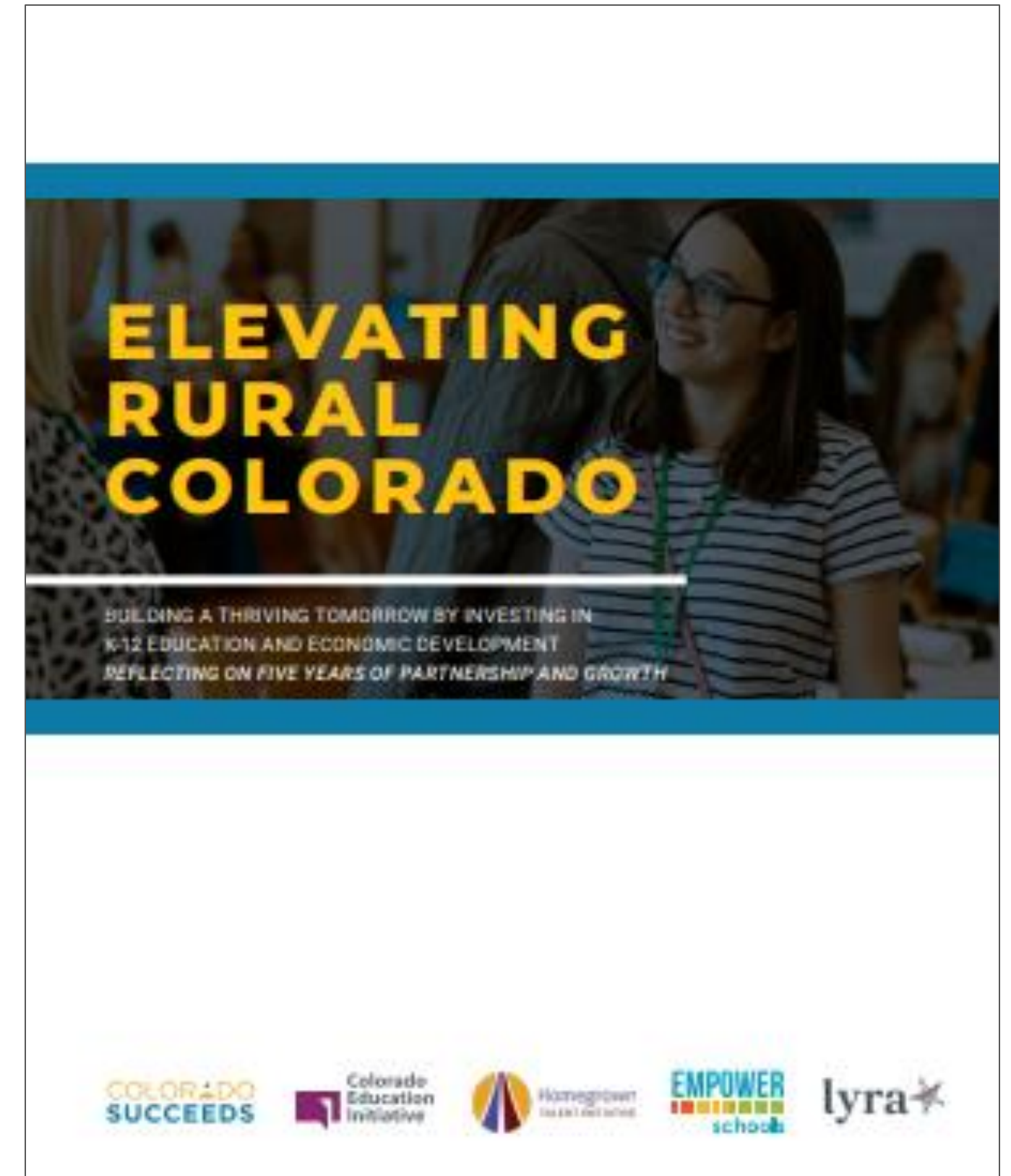
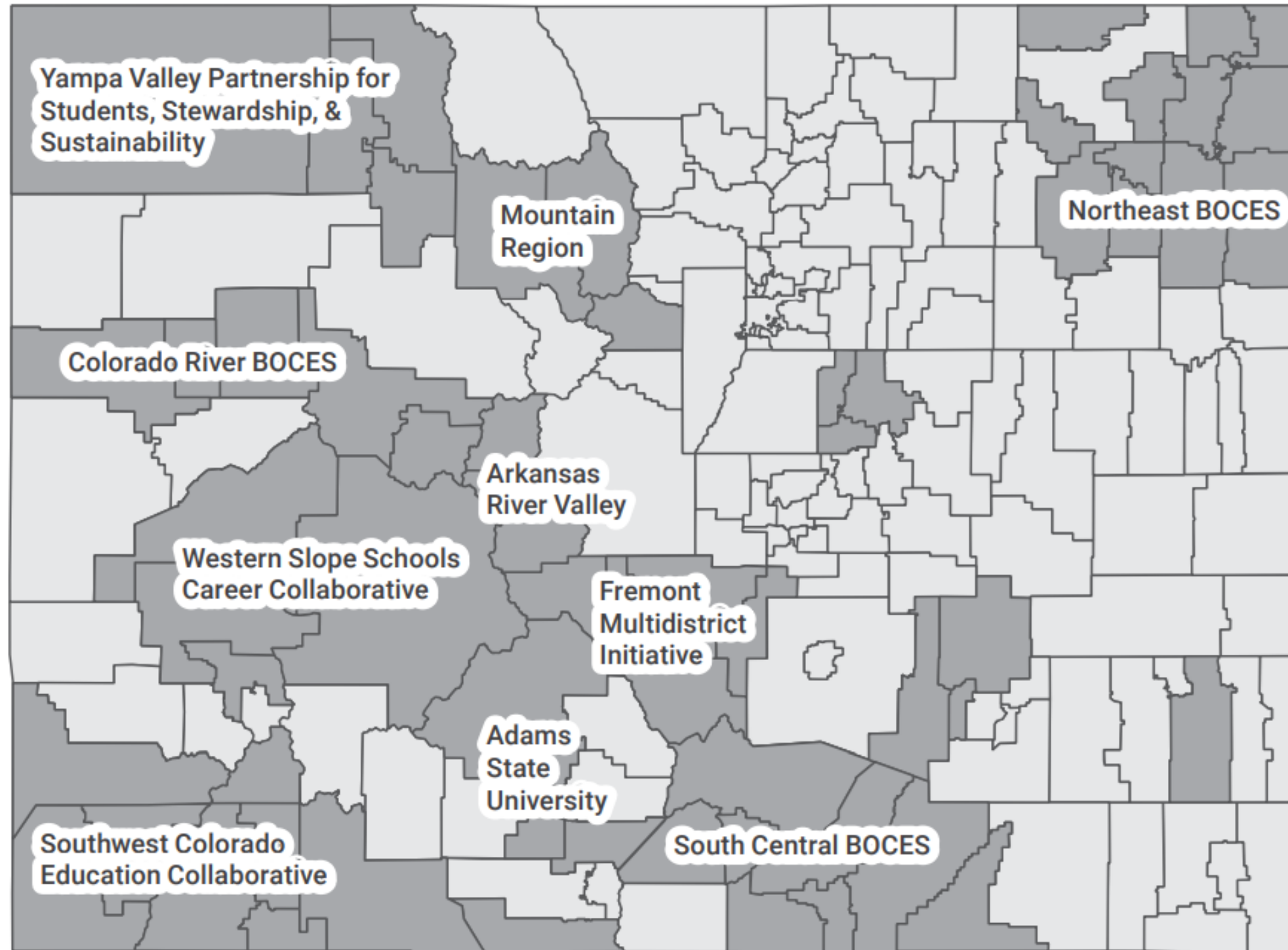
FORMAL MOU & GOVERNANCE

Partners have all signed a formal MOU. The centralizing nonprofit has full time employees and Board of Directors of K12, higher ed, industry, community, and tribe representatives.

Rural Collaboratives are not

- An informal agreement**
- Working together on a short-term initiative or one that only serves a small number of students**
- District Consolidation**
- Only for rural districts (despite the name!)**
- Copy/paste models from region to region**
- Led by an outside organization or non-local leaders**

These Partnerships are Forging All Over Colorado



Join us in a breakout to learn more

- How these collaborations got started and their current states
- How you can get involved in a current region or start your own
- Tips for success and challenges to watch out for



Sara Butler

Director, Empower Schools



Dr. Karen Cheser

Superintendent, Durango 9R
School District

President Board of Chamber
of Commerce Durango



Amanda Cornelius

Director, Fremont
Multidistrict Initiative



**Dr. Landon
Mascareñaz**

Chair, Colorado State Board
for Community Colleges and
Occupational Education

Co-Founder, Open Systems
Institute



Madison Knapp

Director, Colorado Succeeds

