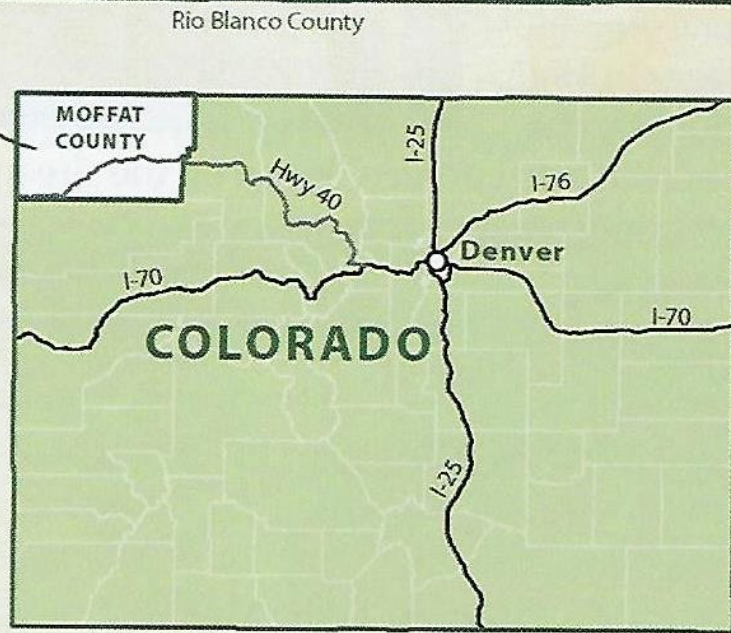
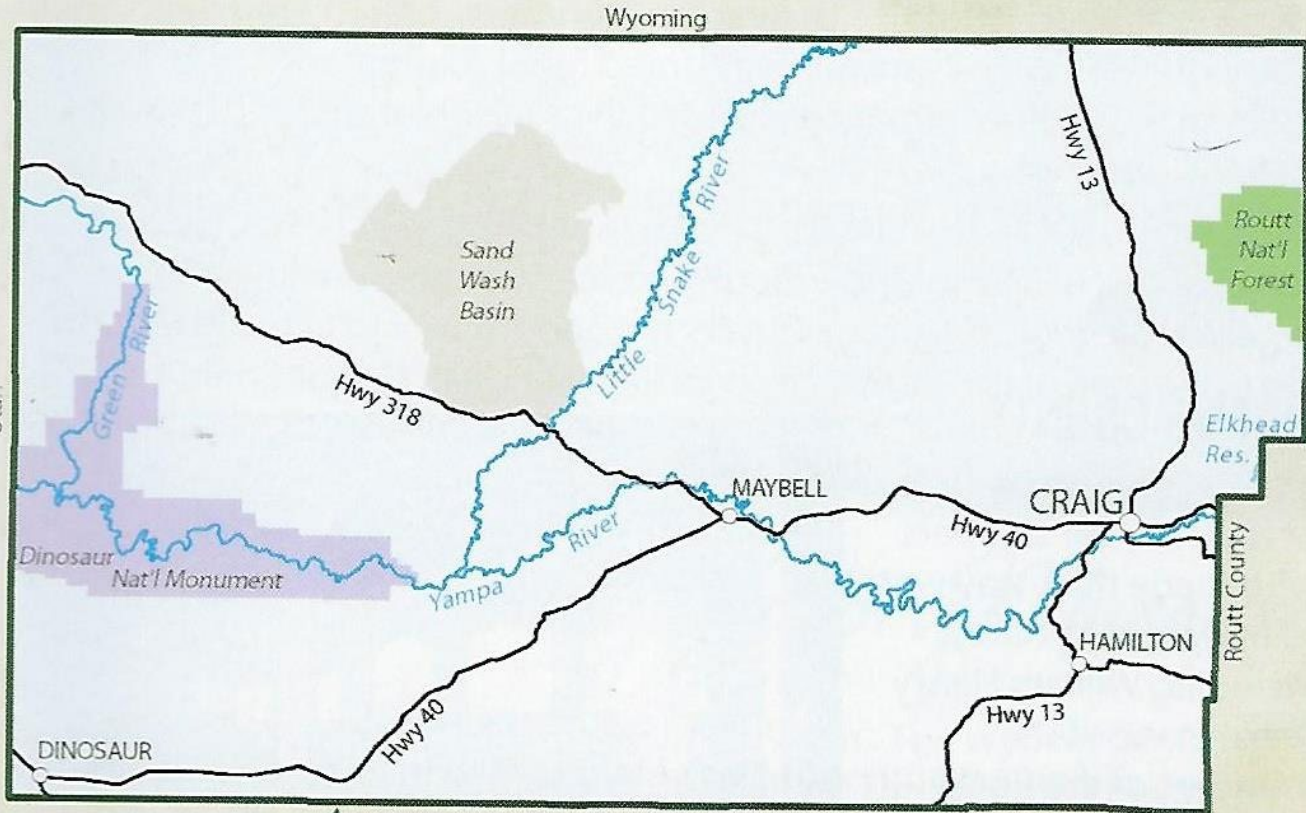




2016 Conceptual Plan prepared by Riverwise Engineering

Yampa River Corridor Project



VISIT *Moffat County*

COLORADO'S GREAT NORTHWEST • VISITMOFFATCOUNTY.COM
MOFFAT COUNTY TOURISM ASSOCIATION • 970.824.2355
POST OFFICE BOX 12 • CRAIG COLORADO 81626 USA



VISITMOFFATCOUNTY.COM







2016 Conceptual Plan prepared by Riverwise Engineering

Yampa River Corridor Project

Project Components

THE YAMPA RIVER CORRIDOR PROJECT IS COMPOSED OF TWO PROJECT AREAS---

Whitewater Park / Diversion Rehab

Located at existing City diversion/intake structure.

Improvements include whitewater river park, park access, parking and upland amenities.

Downriver Boat Ramp

Located at Loudy Simpson Park.

Improvements include a new boat ramp, access and parking.

PHASE 1 : DESIGN, ENGINEERING AND PERMITTING

PHASE 2 : CONSTRUCTION & IMPLEMENTATION

Boat Ramp Draft Plan

GEOGRID
EXISTING WETLANDS

3 HANDICAP PARKING SPACES

VEHICLE PARKING

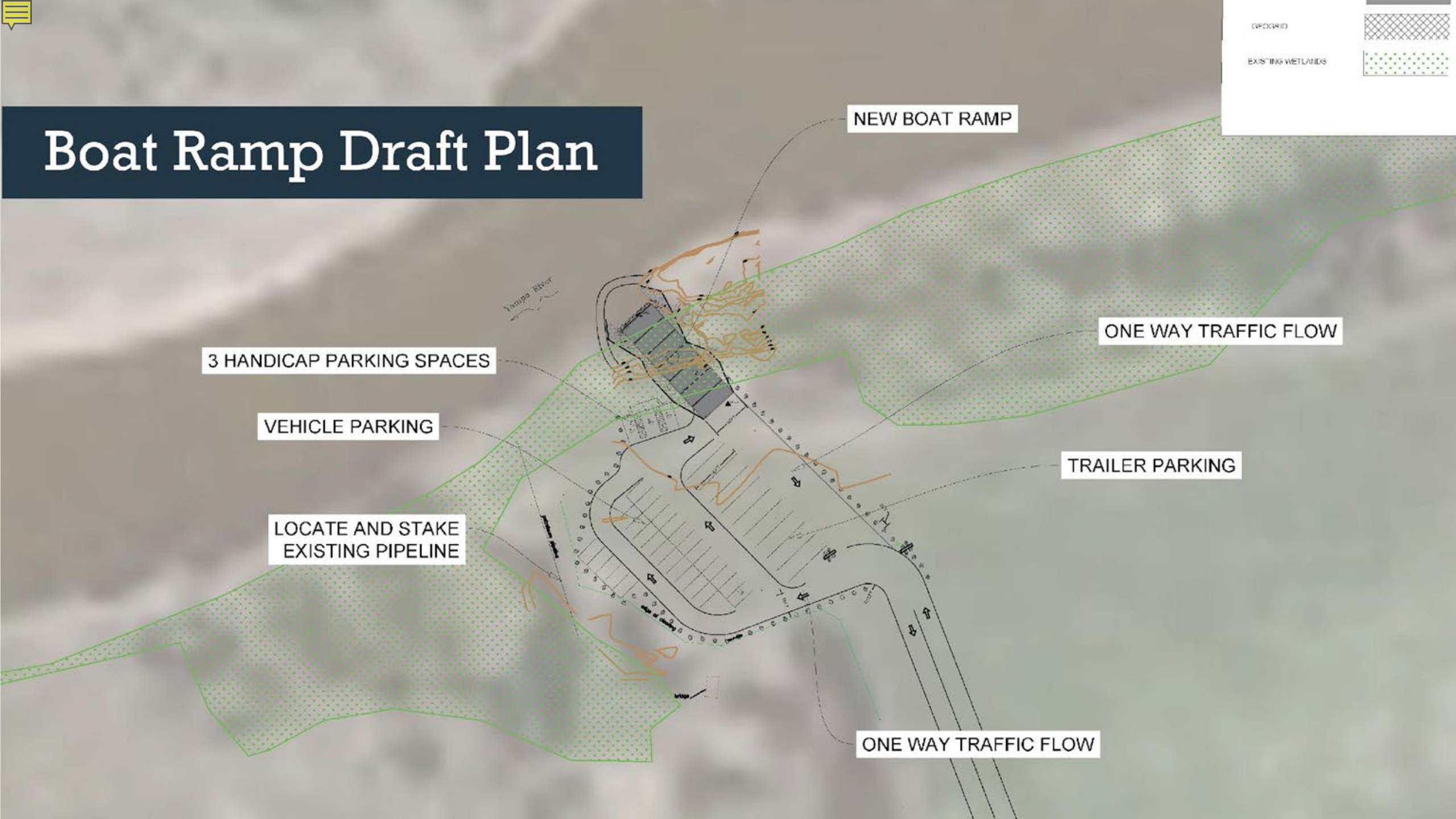
LOCATE AND STAKE
EXISTING PIPELINE

NEW BOAT RAMP

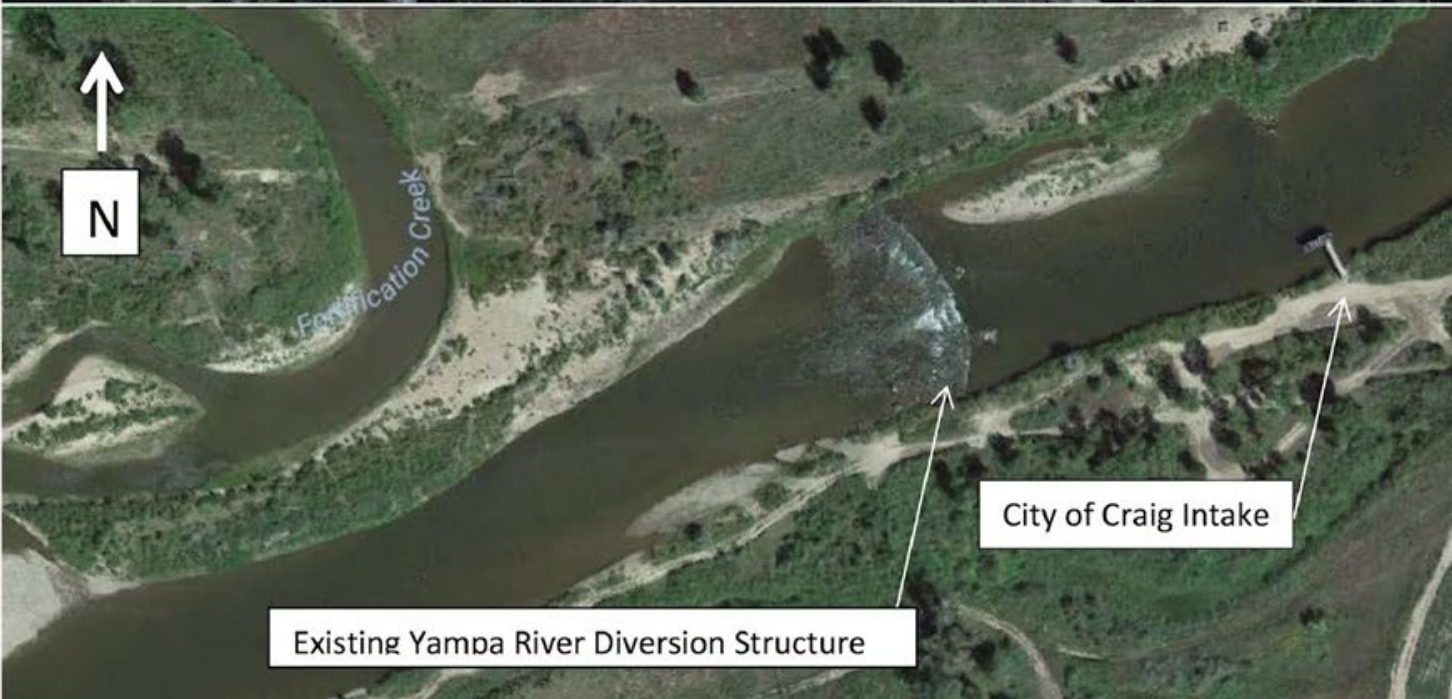
ONE WAY TRAFFIC FLOW

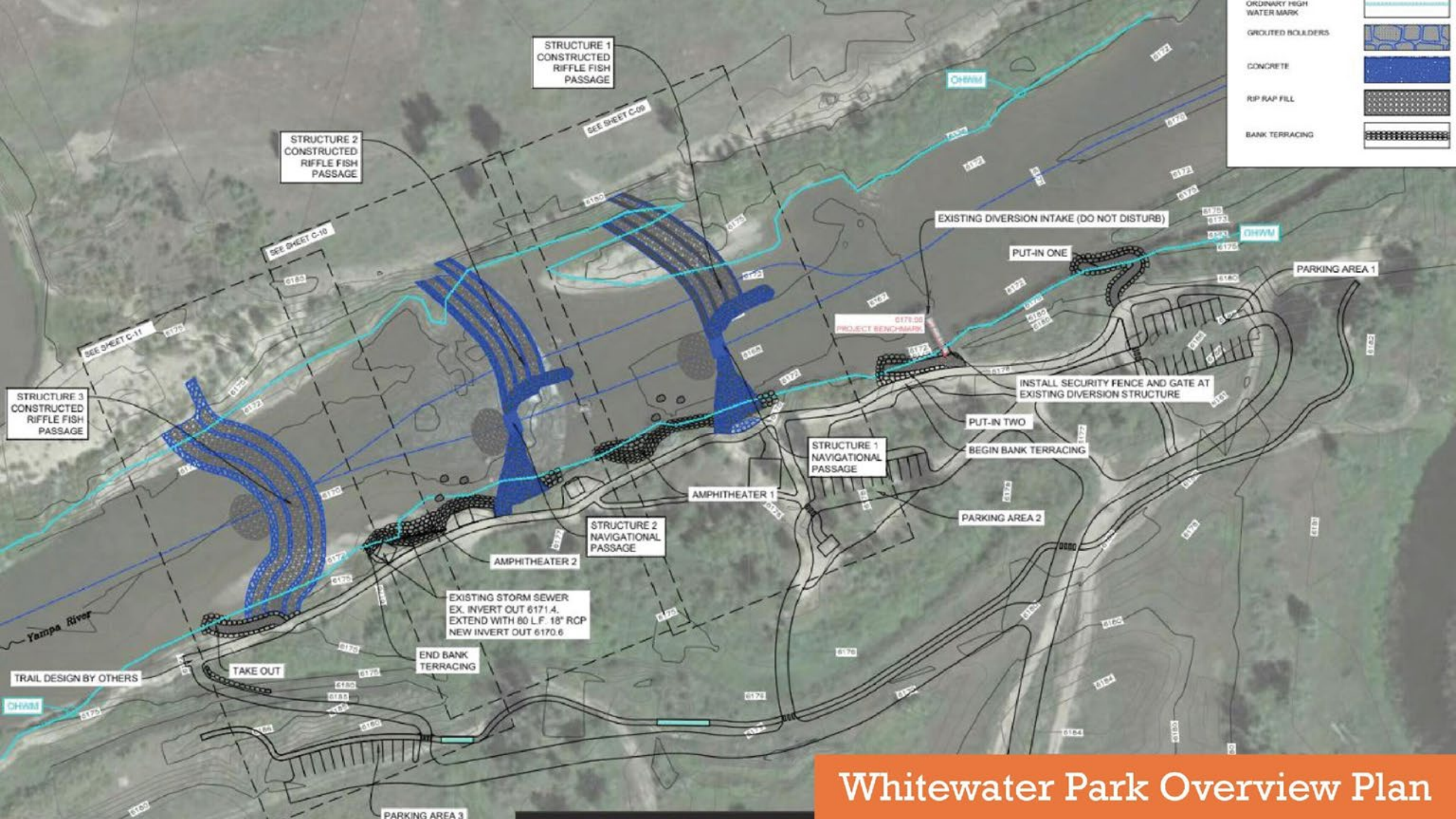
TRAILER PARKING

ONE WAY TRAFFIC FLOW



Existing Diversion Structure





ORDINARY HIGH WATER MARK	
GROUTED BouldERS	
CONCRETE	
RIP RAP FILL	
BANK TERRACING	

STRUCTURE 1
CONSTRUCTED
RIFFLE FISH
PASSAGE

STRUCTURE 2
CONSTRUCTED
RIFFLE FISH
PASSAGE

STRUCTURE 3
CONSTRUCTED
RIFFLE FISH
PASSAGE

EXISTING DIVERSION INTAKE (DO NOT DISTURB)

PUT-IN ONE

PARKING AREA 1

INSTALL SECURITY FENCE AND GATE AT
EXISTING DIVERSION STRUCTURE

PUT-IN TWO

BEGIN BANK TERRACING

STRUCTURE 1
NAVIGATIONAL
PASSAGE

PARKING AREA 2

AMPHITHEATER 1

STRUCTURE 2
NAVIGATIONAL
PASSAGE

AMPHITHEATER 2

EXISTING STORM SEWER
EX. INVERT OUT 6171.4.
EXTEND WITH 80 L.F. 18" RCP
NEW INVERT OUT 6170.6

END BANK
TERRACING

TAKE OUT

TRAIL DESIGN BY OTHERS

PARKING AREA 3

Whitewater Park Overview Plan

Upland Improvements



12' wide river access/ launching area

Car parking - 20 stalls

River access trail

River access trail

8' wide concrete trail

Riverside picnic shelter/ site

Take out area - rock terracing from river to trail (not shown)

Typ. bench/ seating area

Large shelter

Car parking - 12 stalls

Typ. "Nature Play" area

Vault toilet

12' Gravel road - one-way traffic

Car parking - 13 stalls

8' wide trail - typ.

12' Gravel road - one-way traffic

20' Gravel road - two-way traffic

20' Gravel road - two-way traffic

Foot/ bike trail - 5' wide, crusher fines

12' Gravel road - one-way traffic

Project Beneficiaries



Committed to hiring
18 FTE's
+
\$500,000 in matching
private investment
over 9 years



Committed to hiring
50 FTE's
+
\$5,000,000 in matching
private investment
over 9 years



Committed to hiring
15 FTE's
+
\$5,000,000 in matching
private investment
over 9 years

The economic impact literature on whitewater parks and activity overwhelmingly cites research by K.H. Cordell et al (1990), which established regional economic multipliers of 2.00 and 2.03 for the economic impact of water-based recreation expenditures on local economies. Using the more conservative multiplier, we estimate that these direct hires and new investment will stimulate---

Total of 249 new jobs
+
\$31,500,00 in new private investment

PROJECT FUNDING PARTNERS

PHASE I & PHASE 2 TO DATE



\$3,315,342



\$50,000



\$68,000



\$150,000



\$8,000



COLORADO Department of Local Affairs

\$200,000



RESOURCES LEGACY FUND®
CREATIVE SOLUTIONS. LASTING RESULTS.

\$110,000



\$150,000

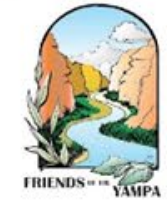


\$30,000



Yampa-White-Green Basin Roundtable

\$165,000



\$65,000



COLORADO Department of Labor and Employment
Office of Just Transition

\$397,916

PROJECT COLLABORATORS

United States Senate
WASHINGTON, DC 20510-0009
MICHAEL F. BENNET
COLORADO

United States Senate
WASHINGTON, DC 20510-0009
JOHN HICKENLOOPER
COLORADO



BOB RANKIN
State Senator



COLORADO Office of Economic Development & International Trade



COLORADO Department of Local Affairs
Office of the Executive Director



NARC Building Regional Communities



MOFFAT COUNTY VISITOR CENTER
CRAIG-CHAMBER.COM



YAMPA RIVER SYSTEM LEGACY PROJECT

Why the Yampa River Corridor Project?

- Supports economic stimulus, resilience & diversification
- Contributes new recreation opportunities identified throughout multiple local strategic planning documents
- Supports increased public access to the Lower Yampa River Basin
- Creates enhanced aquatic/riparian habitat & fish passage
- Project will sustain the City's municipal water supply in a fiscally responsible manner
- Creates a multiuse park serving a variety of populations
- Supports environmental education opportunities, river advocacy & stewardship
- Broad local, regional, state & nationwide project support

COMPLETION OF THE YAMPA RIVER CORRIDOR PROJECT EQUALS A MASSIVE WIN FOR CRAIG & MOFFAT COUNTY!

Thank You!

PROJECT MANAGER CONTACT INFO:

Melanie Kilpatrick

City of Craig

mkilpatrick@cityofcraig.org

970.826.2016

Tom Kleinschnitz

Craig City Council

tkleinschnitz@cityofcraig.org

970.201.3508

YOUNG RIVER ADVOCATE ON THE YAMPA RIVER NEAR CRAIG, CO

