

**Jeff Brown, VP of Roaming and Data Services, Viaero Wireless**

Jeff brings a history of commitment and industry knowledge to Viaero Wireless. He's been a long-term employee, and a highly respected contributor to community organizations in Morgan County and Northeast Colorado. Jeff has 30 years of telecommunications industry experience and directs Viaero's Roaming & Data Services departments. Previously, he was the Operations Manager when the company was known as Cellular One of Northeast Colorado. Jeff also brings executive-level experience to Viaero, having held the CEO title at FiberLink Connection LLC., (an Internet services company), and as Manager of Information Technology at Morgan County Rural Electric. Jeff currently serves on the Colorado Broadband Deployment Board established to provide broadband service in un-served areas of Colorado and also served as a board member with the Morgan County EDC, the Morgan County Quality Water District, and the Weldon Valley School District.

**Justin Childears, VP – Integrated Solutions, 21st Century Equipment, LLC**

Born and raised in western Nebraska with a ranch and farm background, Justin graduated from the University of Nebraska-Lincoln in 1996 with a bachelor's degree in Agricultural Engineering and a minor in Agricultural Economics. Since college, he has been involved directly with agricultural business and production agriculture in Nebraska. Professionally, Justin has primarily been associated with agricultural machinery in the areas of design and manufacture, whole goods sales and support, aftermarket parts and service promotion, and precision agriculture. Since coming to work for 21st Century Equipment in 2005, Justin's work has focused on almost exclusively on the precision agriculture arena and related business strategies to provide value-added services, support, and consulting for the John Deere ISG hardware and various technology systems used extensively by their customer base.

**Michelle Claymore, Economic Development Director, City of Commerce City**

Michelle Claymore is a Certified Economic Developer (CED) with over 25 years of experience. She joined the City of Commerce City in August of 2014 and previously served as Vice President of the Jefferson County Economic Development Corporation from 1995-2014. Michelle received the Economic Developer of the Year award from the Economic Development Council of Colorado in 2010 and founded Colorado's Basic Economic Development Course in 2008. She is also a member of the International Economic Development Council. Starting her career at the Denver Chamber of Commerce, Michelle worked in public policy, economic development, communications and membership throughout her six-year tenure. She is a Colorado native and a graduate of Colorado State University.

**Nathan Erickson, Marketing & Product Development Strategist, Trimble**

Nathan is the Associate Director of Marketing at Trimble Inc. with over 19 years of experience in strategy, marketing, engineering, and process development. He is driven to solve complex problems by bringing data analytics, logic, and technology to the ever-changing agricultural industry. Nathan is a farm boy from Northeast Colorado and grew up around the Ag-retail industry. He has degrees from Colorado State University where he received a degree in Bioresource and Agriculture Engineering and the University of Iowa with an MBA.

**Tammy Fields, EDCC's Board Chair & Chief Economic Development Officer for Colorado Springs Chamber & EDC**

Tammy has over 24 years of experience working economic development in Colorado Springs. For the past 16 years Tammy has been one of the top "faces" of economic development in Colorado Springs and has been instrumental in helping to attract over 27,500 jobs to the Colorado Springs community. As a native of Colorado Springs, she has a passion and love for the community she promotes every day to key employers considering Colorado Springs as a place to grow their business. She currently serves as the Board Chair for the EDCC, is on the Board of Directors for the Southern Colorado Commercial Brokers, a graduate of the Leadership Pikes Peak 2013 Signature Class and has been selected for the Colorado Springs Leadership Institute – Class of 2019. Tammy has been married to her husband Dan for 39 years and lives in Falcon, CO. She enjoys riding and showing reining horses, helping run their small cattle operation, and spending time with her 8-year-old grandson.

**Mayor Ford, City of Commerce City**

Sean Ford was elected to serve as mayor of Commerce City for the second time in November 2011 and re-elected in November 2015. A life-long resident and graduate of Adams City High School, Ford has seen Commerce City transition from a quiet town of 20,000 into a vibrant city of more than 50,000 residents. A tireless public servant and former city public works employee, Ford previously served as mayor from 2003 to 2007 and was a councilor at-large from 1999 to 2003. He was instrumental in facilitating a public-private partnership that resulted in a new civic center, Dick's Sporting Goods Park and a new high school. He also served as the chairman of the city's planning commission, was a board member of the E-470 Authority and has helped oversee the implementation of the 2013 voter-approved \$137 million capital improvement program. A member of the 2006 Metro North Chamber of Commerce Leadership Program, Ford was recognized by the Commerce City Business & Professional Association as the 2002 Citizen of the Year. Sean and his wife Samantha have been married for more than 20 years and have four children, with his oldest son serving in the U.S. Air Force. His hobbies include hunting and fishing.

**David Griffin, Project Manager, Colorado Rural Workforce Consortium**

David Griffin is the Project Manager for the Colorado Rural Workforce Consortium (CRWC). Projects include CORE team member for Region 1 Manufacturing and Region 5 Healthcare Partnerships; CRWC lead for the Statewide Business Services and Career Services Alignment initiatives; and CRWC lead for all Workforce Center co-location efforts throughout the Rural Consortium. Before joining the CRWC, David was involved in workforce development with the Wyoming Department of Workforce Services as the Administrator of the Employment Services Division. David holds a degree in Business Administration from the University of Colorado.

**Michael Gutman, Director of Marketing, FlexJobs**

Mike Gutman, Marketing Director at FlexJobs, helps connect people and companies to the value of work flexibility through strategic partnerships and communications. He believes the sustainable benefits of remote work have the power to dramatically disrupt and improve how we do work.

**Bob Harlow, CEO, Veris Environmental**

Bob grew up in southwest Kansas on a family farm and has spent his entire career in production agriculture and agri-business. As the CEO and a Managing Member of Veris Environmental, LLC, Bob is committed to identifying new technologies that will drive efficiency and/or control costs. Veris Environmental land application of nutrient rich residual waste streams has been a natural fit for several precision ag technologies. Heritage Farms' need for cost containment of crop inputs and maximization of revenue has led to wholesale adoption of several of the precision ag technologies currently available. He has led the effort in both organizations to analyze specific technologies currently available in the marketplace and implement the chosen precision technologies options.

**Erik Jensen, Shareholder, Brownstein Hyatt Farber Schreck**

Erik Jensen brings a strong business and pragmatic perspective to his practice assisting individuals, businesses and nonprofits with their federal, state and local tax issues. Erik advises clients in a wide range of industries on tax-efficient structuring for business formations, capitalizations, mergers, acquisitions, reorganizations and liquidations, and provides counsel on other tax and business needs. He has experience in state and local taxation and has represented clients in audits and litigation matters in numerous jurisdictions across the U.S. In addition, Erik has significant experience working with joint ventures in a variety of industries, drafting their joint venture agreements and other documents related to their operations. Prior to joining the firm, Erik worked as a tax associate at Baker Botts in Houston and as a tax and corporate associate at Otten Johnson in Denver. In his pro bono practice, Erik helps 501(c)(3) organizations with their formation and application for tax exemption and counsels them in their ongoing tax-related compliance issues.

**Brian Lewandowski, Associate Director – Business Research Division, CU Leeds School of Business**

Brian's research focuses on the regional economy, specifically Colorado. During his time at Leeds, his research endeavors have examined employment, industry composition, economic resiliency, mining, housing, and others. A Leeds MBA ('07), Brian worked in the Peace Corps and in private industry before joining Leeds.

**Andrea L'Heureux, Dean of Workforce Development, Morgan Community College**

Andrea L'Heureux began her career at Morgan Community College as the Manufacturing Pathway's Coordinator and Transcript Evaluator. She helped revive the manufacturing sector partnership in Region 1 (Northeast Colorado Manufacturers) and created *Girls Only: Women in Manufacturing*, a one-day event involving 80 young women grades 8 - 9 have an experiential day led by professional women in manufacturing. Andrea is now the Dean of Workforce Development and CTE Programs. Prior to her career with Morgan Community College, Andrea was a professional school counselor for 20 years. Andrea holds a bachelor's degree in Industrial/Organizational Psychology and Anthropology from Kansas State University and has obtained a master's degree in Secondary/Post-Secondary School Counseling from the University of Northern Colorado.

**Stan Lindstadt, Eastern Regional Director, Startup CO**

Stan Lindstadt attended Northeastern Junior College in Sterling, Colorado. He then graduated summa cum laude from the University of Texas. Following college, he entered the corporate world, working for three fortune 50 companies in a row. After ten years with Apple Computer, he moved the family back to northeast Colorado. Here, his entrepreneurial spirit took over and he started three separate successful businesses. With firsthand knowledge of the hurdles that challenge the startup entrepreneur, he is excited to bring his own experience in small business and corporate leadership to Startup Colorado.

**Betsy Markey, Executive Director, Colorado Office of Economic Development and International Trade**

Betsy Markey was appointed by Governor Jared Polis to his cabinet as Executive Director of the Colorado Office of Economic Development and International Trade in January 2019. She has over 30 years of leadership experience in government and the private sector. She has served as a Member of Congress, a senior federal executive, and the co-founder and CFO of a high-tech company. Betsy was appointed by President Obama to serve as the Regional Administrator for the U.S. Small Business Administration (SBA) based in Denver in 2016. In this capacity she oversaw the delivery of the agency's small business programs and services in Colorado, Montana, North and South Dakota, Utah and Wyoming. In 2011, she was appointed by the President to serve as the Assistant Secretary for Intergovernmental Affairs for the U.S. Department of Homeland Security in Washington DC. She facilitated the direct line of communication between the department and governors and mayors across the country on all DHS mission areas, including cyber security, terrorism prevention, transportation security, to name a few. Betsy was elected to serve as a Member of Congress in Colorado's 4th Congressional District in 2008 and represented over 700,000 constituents in one of the country's largest congressional districts in the 111th Congress. She served on the Transportation and Infrastructure and Agriculture Committee's.

**Troy McCue, Executive Director, Lincoln County Economic Development**

Troy McCue is the executive director for Lincoln County Economic Development and is the local SBDC business consultant for Lincoln County. Troy spent 25 years in the Agri-Business industry, trading grain and feed for the local area farmers and ranchers in Lincoln County. A graduate of Colorado State University in Agriculture Business, Troy brings to his consultancy many years of small business management, accounting, and taxation skills. Troy has also had a long career serving in a civic capacity as mayor of the Town of Arriba, and two terms as a trustee to the town council. He also has been actively involved in economic development since Lincoln County's organization's beginning in 2003. Troy's wife, Dr. Leesa McCue, is a local veterinarian in Limon, and his daughter, Mercedes, and son, Austen, both attend the Limon School District.

**Chris Montgomery, Managing Director, Four Points Funding**

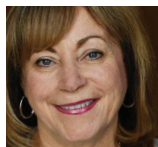
Chris Montgomery is the Managing Director of Four Points Funding based in Steamboat Springs, CO. Four Points runs RuralCOZ, an Opportunity Zone fund focused across rural Colorado. RuralCOZ funds real estate and place based businesses partnering with local developers and entrepreneurs. In addition Four Points operates Western Slope Angels which provides capital and mentoring to seed stage companies focused on companies outside the traditional urban investment areas. Our thesis is that investors can achieve market rates returns using alternative investment strategies. Modern technology allows passionate entrepreneurs to pursue building their companies outside of Silicon Valley and we believe in finding and supporting this new breed of company founder. Chris established his career in managing NCM Acquisitions, a distressed real estate fund based in Western Colorado. Chris is a graduate of Rice University, proud father and an avid skier and pickleball player.

**Jana Persky, Opportunity Zones Manager, OEDIT**

Jana Persky is a Strategic Initiatives Manager at the Colorado Office of Economic Development and International Trade (OEDIT), where she is managing the Opportunity Zone program. She has a degree in Public Policy from Stanford University and has previously worked in management consulting.

**Alexandra Peterson, Senior Manager, Skillful/Markle Foundation**

Alexandra leads a number of efforts for Skillful, an initiative of the Markle Foundation. She sets strategy and manages partnerships and projects for data transparency, seeking to increase educational and workforce data transparency, connectivity and accessibility so that the entire workforce ecosystem can make high-quality, data-driven decisions. As the leader of the employer portfolio, she and her team promote and enable the transition to skills-based practices for Colorado companies, creating more opportunity for Coloradans. She previously worked in a joint capacity between Skillful and CareerWise Colorado as a project manager, business development manager, researcher and data analyst. Alexandra's background is in finance, economics and policy, with experience in corporate development and strategic finance for a fortune 500 infrastructure company, economics for the OECD, and special projects work for the Presidential Libraries system.

**Lt. Governor Dianne Primavera**

Dianne Primavera is a leading patient advocate who has spent three decades fighting for every Coloradan's access to quality, affordable health care. As a young mom in 1988, Dianne was diagnosed with breast cancer and was given, at most, five years to live. Since her first diagnosis, Dianne has fought cancer four times and survived. Her personal battle with cancer inspired her to make it her life's work to ensure every Coloradan has access to the health care they need when they need it. In 1990, Dianne joined the Rocky Mountain Regional Brain Injury Center, where her work focused on helping individuals dealing with serious injuries recover and resume dignified, fulfilling lives. Since then, she's held many prominent positions throughout the public and non-profit sectors devoted to furthering life-saving medical research. In 2006, Dianne was elected to the first of four terms in the State Legislature, representing Broomfield, Superior, and parts of Erie. Most recently, Dianne served as the CEO of Susan G. Komen CO, one of the largest organizations in the country dedicated to breast cancer prevention, treatment, research, and education. Dianne is a lifelong Coloradan and a Broomfield resident. She has two adult daughters and a one-year-old granddaughter, Kailani. Dianne is also an avid country dancer - taking after her dad, who was a dedicated ballroom dancer throughout his life, even on his 95th birthday.

**Dawn Robards, Director - Eastern Region Workforce Centers, Colorado Rural Workforce Consortium**

Dawn Robards began her tenure in Workforce Development as a college intern at the Adams County Workforce Center, assisting with the JTPA and Governor's Summer Job Hunt enrollments. Following college, her career progressed from a food stamp caseload with the Denver Mayor's Office of Employment and Training, to compliance monitoring of workforce system operations with the Colorado Department of Labor and Employment, and finally on to Workforce Center Operations at both the County and State levels. She has been Regional Director for the Eastern Workforce Sub Area since 2010. The region is responsible for providing workforce and business support for the 10 counties in northeastern Colorado.

**Rick Robbins, CEO, Colorado Mills**

Richard "Rick" Robbins began his career on his family farm in western Kansas. He left farming in 1989 and became the Regional Feed Manager for Farmland Industries working with 42 cooperatives in Western Kansas and Eastern Colorado. Rick was hired by Colorado Mills in 2002 to oversee a major manufacturing plant makeover and in 2004 was hired as the general manager and CEO. Over the past 15 yrs, Colorado Mills has gone from 15 employees to 47 full-time employees, operating 2 facilities that run 24hrs a day, 7 days per week. Annual revenues have increased from 5 million annually to 20 million annually. Rick holds an associate degree in Farm and Ranch Management from Colby Community College and a B.A. in human resources from Friends University in Wichita, Kansas.

**Jon Saunders, Chief Business Development Officer/Quality Officer, SECOM Inc.**

Jon is an experienced network engineer and has worked in the telecom industry for two decades. Currently, he serves as Chief Business Development Officer at SECOM Inc. and has previously served as CIO and COO. Being an innovator at heart, in 1999 he designed and deployed Colorado's first widespread Metro Optical Ethernet (MOE) network. Prior to joining SECOM, he did network consulting and integration for businesses throughout Colorado. Jon's passion for leveraging technology to solve his customer's tough problems has allowed him to find unique solutions that surpass customer expectations.

**Dr. Lisa Schlotterhausen, VP of Academic & Student Services, Lamar Community College**

Dr. Schlotterhausen serves as Vice President of Academic and Student Services at Lamar Community College. Prior to coming to Lamar in 2018, she served as the interim Dean of Academic Affairs at Riverland Community College, Minnesota; Dean of Institutional Effectiveness and Planning at Century College, Minnesota; Dean of Institutional Effectiveness at North Hennepin Community College, Minnesota; Academic, International, and Financial Aid Advisor at North Hennepin Community College; and International Student Advisor at Stony Brook University, in New York. She has a Ph.D., M.Phil., and B.A. in Anthropology from New York University and a B.A. in Biology and Anthropology from Drew University. She lived in India for several years as part of her graduate work where she studied language and conducted research on the social behaviors and ecology of monkeys.

**Micah Schwalb, ESQ., Partner, Roenbaugh Schwalb**

Micah Schwalb advises clients on transactions and compliance. His deal practice focuses on finance, mergers and acquisitions, restructuring/reorganization, commercial transactions, and general corporate law. His regulatory practice involves advising companies on regulations applicable to capital-raising transactions, agribusiness, and cross-border transactions, in particular issues arising under SEC-administered regulations, the U.S. Foreign Corrupt Practices Act, sanctions programs enforced by the Office of Foreign Assets Control, and anti-money laundering/counter-terrorism finance issues presented by the USA PATRIOT Act/Bank Secrecy Act and its implementing rules and regulations, as well as the Farm Credit Act and the Farm Bill. He serves clients involved in food and agriculture, impact investment, finance, software, aerospace and space, real estate, telecommunications, natural resources, nonprofits, and the creative arts, and also serves as fractional counsel to producers in Kansas and Colorado.



Hoyt Skabelund, Division CEO, Banner Health’s Rural Hospitals

Hoyt Skabelund, a Utah native with more than 20 years of health care leadership, is CEO of Banner Health’s Rural Division of 10 hospitals located in Colorado, Nebraska, Wyoming, Arizona, Nevada and California. Prior to his current role, Hoyt was CEO of Sterling Regional Med-Center in Sterling, CO. He also served as the CEO of Banner Churchill Community Hospital in Fallon, NV, and as the administrator for Plains Regional Medical Center in Clovis, NM, Socorro General Hospital in Socorro, NM, and Dr. Dan C. Trigg Memorial Hospital in Tucumcari, NM. Prior to his executive career he served in various health information management positions. Hoyt received his master’s in health care administration and business administration from the University of Minnesota and a B.A. in accounting from Utah State University and is a Certified Management Accountant. Hoyt and his wife, Carmen, have two children, Wayne and Whitney, who along with their spouses attend Utah State University.



Kevin Stansbury, CEO, Lincoln Community Hospital and Care Center

Kevin Stansbury and his wife Jeni, live in Hugo where Kevin has served as CEO at Lincoln Community Hospital since November 2014. Kevin’s passion for serving others has led him to 35 years in healthcare, primarily in community hospitals in the United States and internationally. He has worked in such diverse locations as Libya, Nigeria, Ethiopia and Vietnam. Kevin is committed to improving the sustainability of rural healthcare. Through his service on the Colorado Hospital Association Board of Directors he has had the opportunity to engage with a variety of policy makers on the challenges facing small rural hospitals. Kevin received his BS in Business Administration from the University of Wyoming, MS in Health Services Administration from Central Michigan University and he received his JD from the University of Wyoming College of Law. Kevin and Jeni have three grown children and five grandkids. He is an avid Chicago Cubs and Wyoming Cowboys fan and loves spending time with his family.



Greg Thomason, Executive Director, Morgan County EDC

Greg Thomason is the Executive Director of the Morgan County Economic Development Corporation, a position he assumed March 2016. Prior to this, Greg’s involvement with economic development included experience serving as a community representative for a regional economic development council in Wyoming; charter membership on the Bridger Valley Chamber of Commerce (Southwest Wyoming); three years as a board member with Historic Olde Town Arvada; plus selection as a marketing resource for the Colorado Department of Local Affairs and Colorado Community Revitalization Association’s “Community Revitalization Partnership” (CRP) program. Greg has extensive experience in conceiving and launching start-up corporations, serving as a founding partner with five start-ups; two of which were later sold to ongoing businesses. His philosophy toward business innovation and community-based economic development are influenced by Steve Job’s commitment and adherence to “Think Different.”



Brian Watson, Community Development, Proximity

Brian Watson is an entrepreneur, connector, and community developer. Brian has been starting and running businesses since he was 17 and believes that entrepreneurship is the greatest tool, we have to positively impact our communities. His startup, Proximity, strives to help connect the world’s mobile workforce through an innovative combination of hardware and software that manages coworking spaces across the world.

REGIONAL ECONOMIC DEVELOPMENT FORUM STEERING COMMITTEE

The EDCC works in coordination with its members in the selected region to develop the content for the regional forums. The topics relate to successes and challenges within their region but aren’t completely unique to them alone. We have found as we travel around the State, that successes and challenges of one community are often similar to that of another. EDCC provides a platform for these discussions and promotes the sharing of ideas. EDCC thanks the Regional Economic Development Forum Steering Committee from regions 1, 5 and 6 for providing a deeper look into their region, discovering what makes them unique, and providing timely and useful information that will help Colorado’s economic competitiveness.

STEERING COMMITTEE

- Alex Arellano, Morgan Community College
- Danelle Berg, Otero County Economic Development
- Melody Bolton, Limon Workforce Center
- Stephanie Gonzales, Southeast Colorado Enterprise Development
- Drew Kramer, Tri-State Generation & Transmission Association
- Danielle Lendriet, Colorado Office of Economic Development & In't Trade
- Troy McCue, Lincoln County Economic Development Corporation - CHAIR
- Trae Miller, Logan County Economic Development Corporation
- Candace Payne, Prairie Development Corporation
- Trisha Thibido, Colorado Department of Local Affairs
- Greg Thomason, Morgan County Economic Development Corporation
- Kim Woodworth, Economic Development Council of Colorado - COORDINATOR